

[]

WORKPAD

17 ST. ANNE'S COURT
SOHO



17 ST. ANNE'S COURT

Once the esteemed home of Trident Studios, where legendary artists like David Bowie, Elton John, and the Rolling Stones crafted timeless records, 17 St Annes Court carries a rich legacy that resonates through the decades. Situated in the vibrant heart of Soho, this historic property has been meticulously rejuvenated, seamlessly blending its period charm with modern sophistication, to provide an ideal setting for both professionals and entrepreneurs.

Strategically nestled in one of London's most sought-after neighborhoods, our serviced office presents unmatched connectivity. With major train stations like Oxford Circus and Piccadilly Circus just moments away,



OXFORD CIRCUS
Walking - 6 mins



PICCADILLY CIRCUS
Walking - 8 mins



TOTTENHAM COURT ROAD
Walking - 9 mins



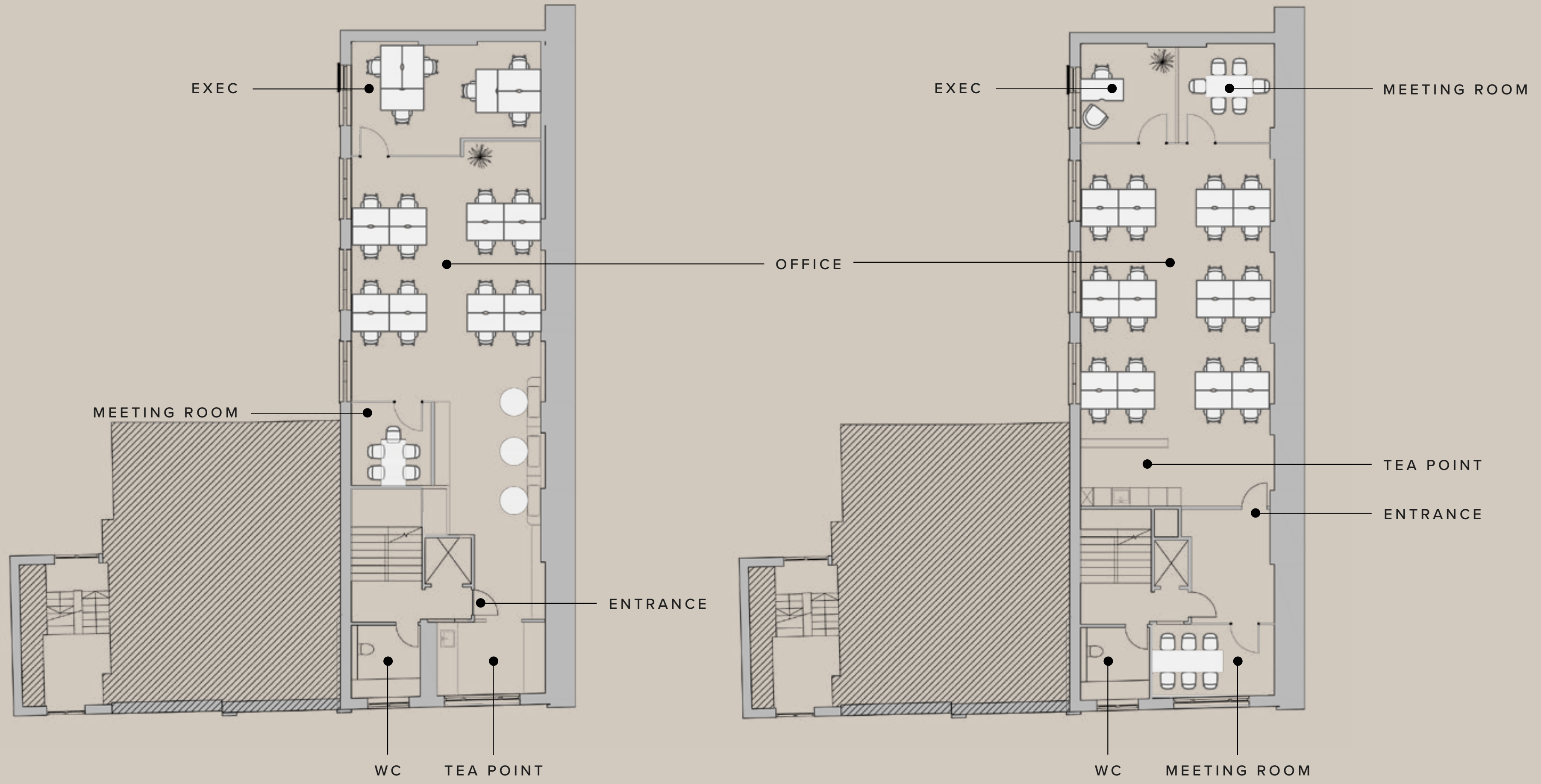
WHAT'S INCLUDED?

- All Inclusive & Flexible Contracts
- Building Rates & All Utilities
- In-House Maintenance & IT Support
- Daily Cleaning
- Air Conditioning



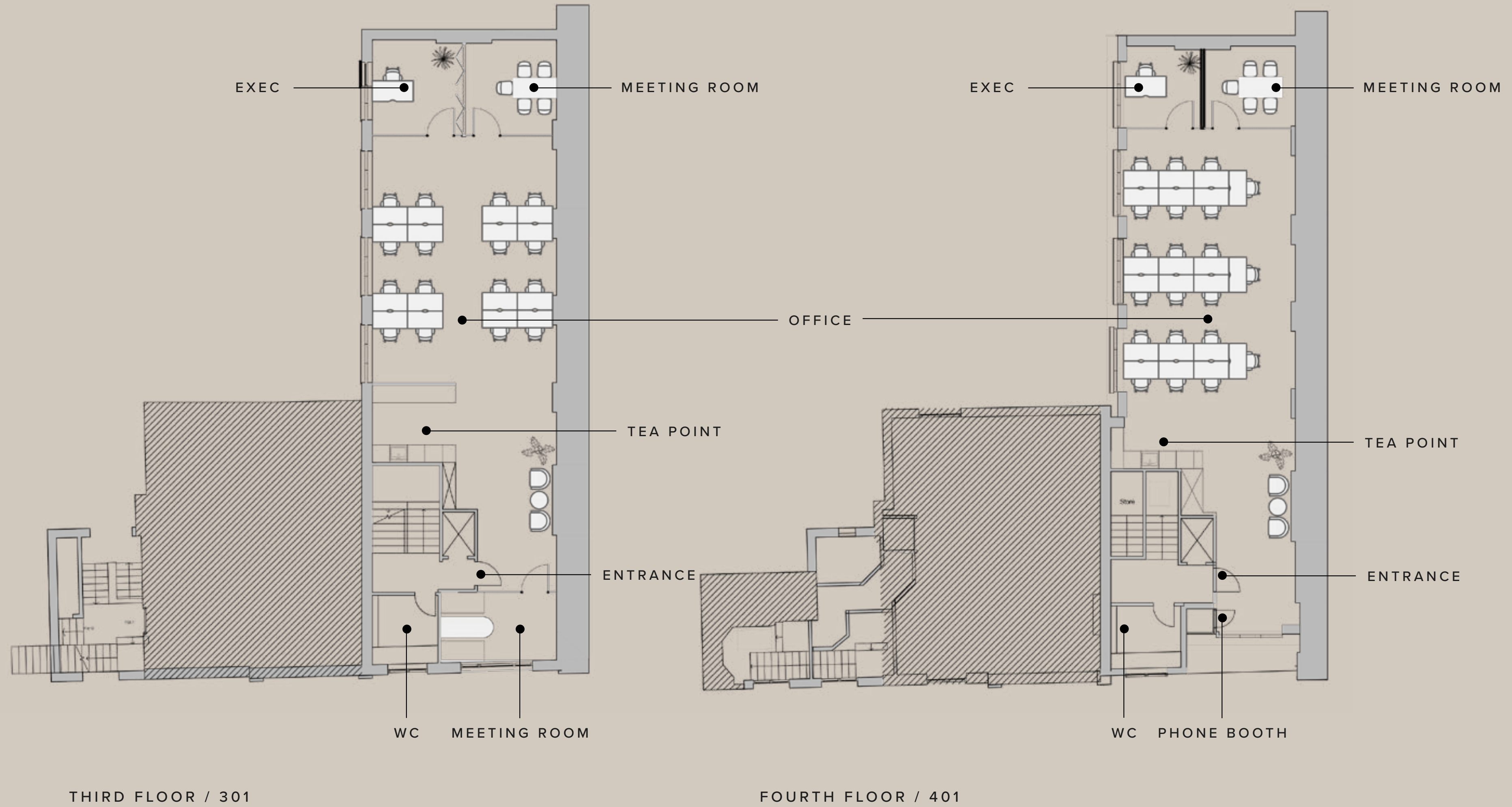
FIRST FLOOR INDICATIVE VIEW





FIRST FLOOR / 101

SECOND FLOOR / 201



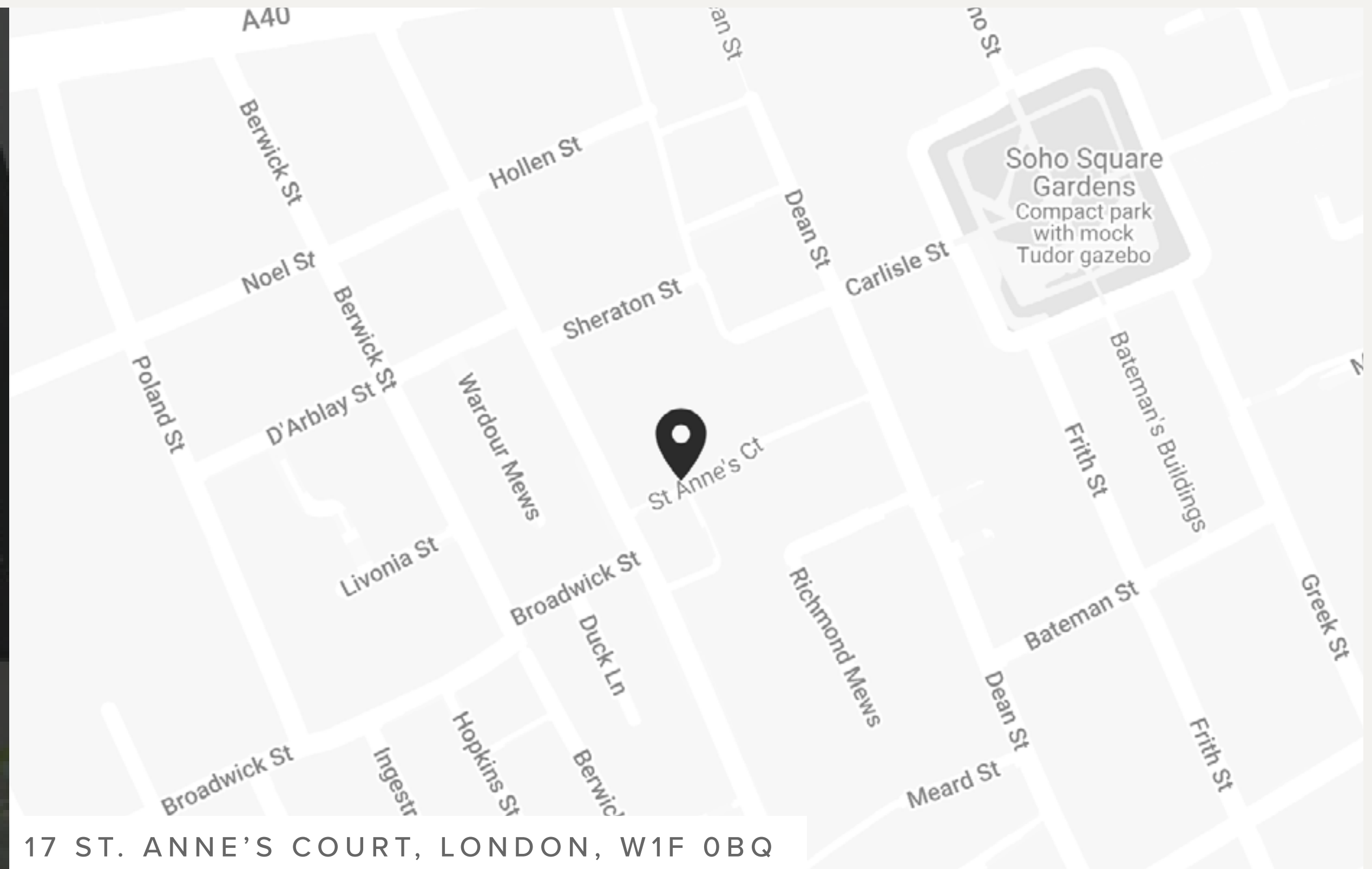


BOOK YOUR TOUR TODAY

Our team is dedicated to helping you explore our London buildings filled with unique spaces, personality and character.

BOOK VIEWING

VIRTUAL TOUR



17 ST. ANNE'S COURT, LONDON, W1F 0BQ



DESIGN TAILORED TO YOU

At WorkPad we understand that when considering reorganisation of your existing offices, or undertaking a new office refurbishment, selecting the correct furniture is vital to delivering an office environment that works for you.

We aspire to make this process simple; with an array of designs grown out of years of experience and close cooperation with our clients, you can select individual or packaged designs, or speak to our stylist for a larger array.

[EXPLORE BESPOKE](#)



3D Visualisation produced by our in-house Design Team



Book a viewing today:

020 7788 7507
enquiries@workpad.co.uk
www.workpad.co.uk

16 Stanhope Place
London
W2 2HH

