



WORKPAD

MANAGEMENT

THE ROOKERY
LONDON




THE ROOKERY



THE ROOKERY

The available space and all the common parts have been comprehensively refurbished to provide bright, open, flexible office accommodation that had been delivered to a high specification.

The space is accessed via a stunning reconfigured entrance and reception area featuring an art display by world renowned artist Eva Berendes. The last remaining space is the 4th floor which has recently been fully fitted.

-  TOTTENHAM COURT
Walking - 3 mins
-  GOODGE STREET
Walking - 8 mins
-  COVENT GARDEN
Walking - 9 mins



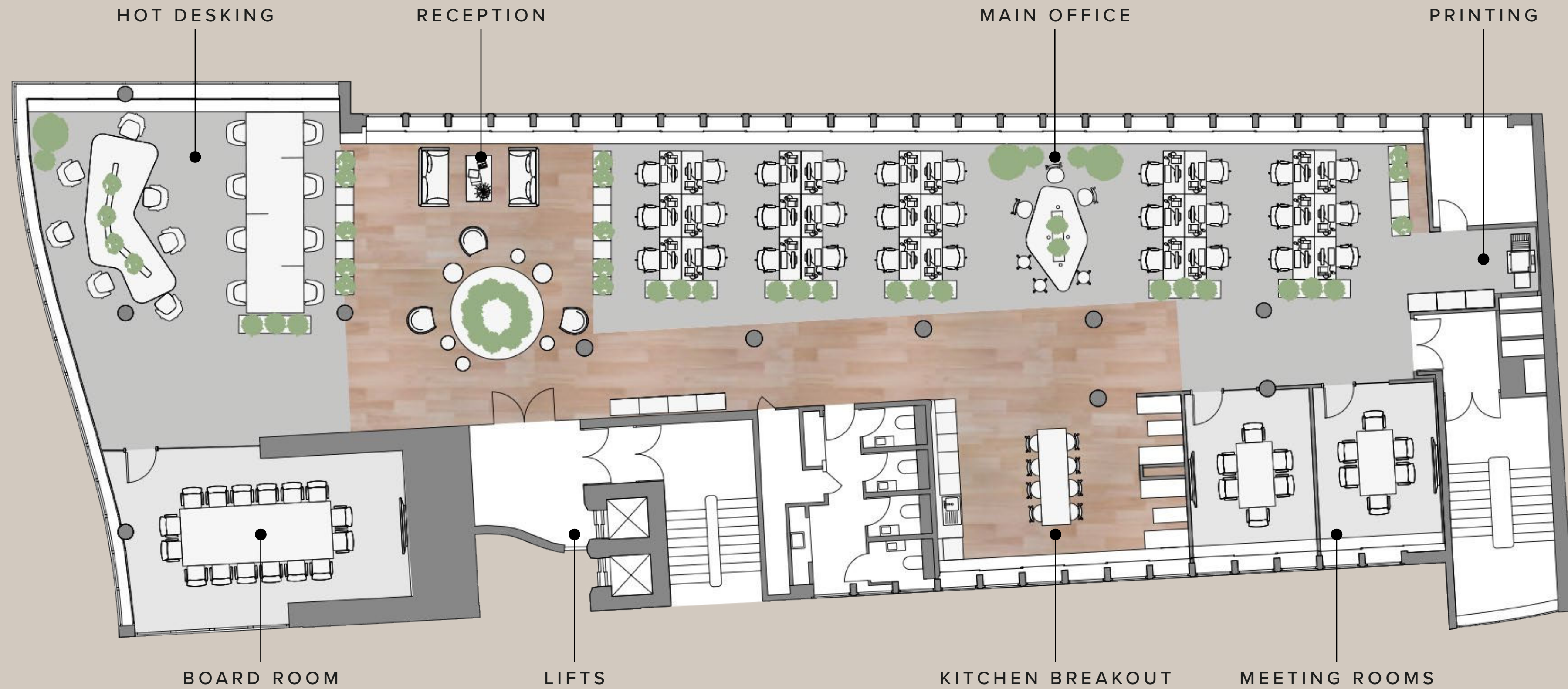
WHAT IS INCLUDED:

- [] All-Inclusive Managed Workspace
- [] Flexible terms of 24+ months available
- [] From 45 to 65 desks
- [] Fitted & Furnished Space
- [] Fully-Inclusive Monthly Fee
- [] In-House Maintenance & IT Support
- [] Enterprise-Level Resilient Bandwidth
- [] Daily Cleaning & Facilities Management
- [] Full Access to WorkPad Concierge, a Range of On-Demand Business, Technology & End-of-Journey Services





FLOORPLAN



4TH FLOOR

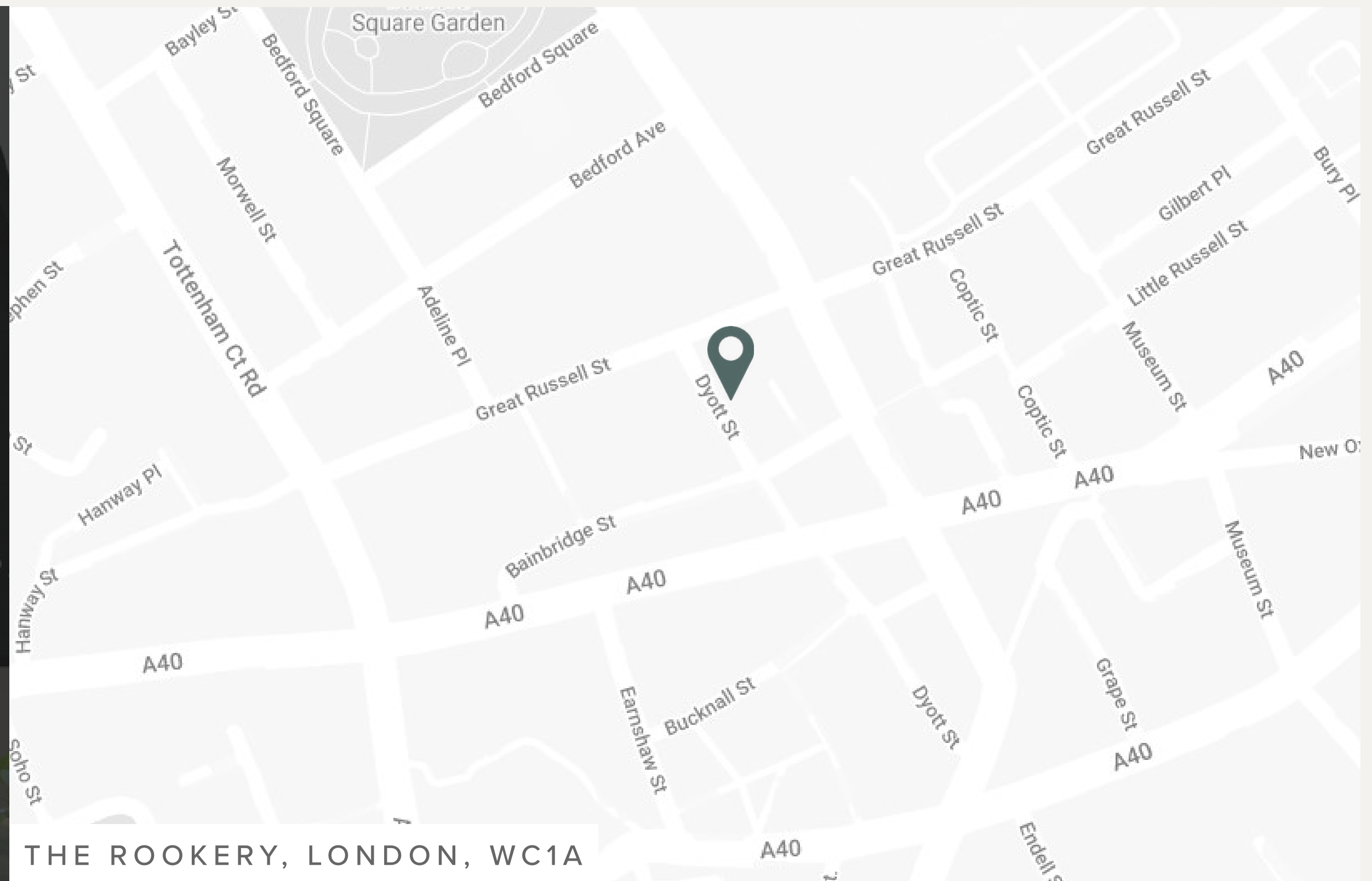


BOOK YOUR TOUR TODAY

To book a tour of the space, please click below:

Alternatively, to view the floor via our virtual platform, click here:

BOOK VIEWING





WORKPAD

MANAGEMENT

SALES MANAGER - MATTHEW WRIGHT

07517 730 370

MATTHEW.W@WORKPAD.CO.UK

020 3835 2359

WWW.WORKPAD.CO.UK