



WORKPAD

MANAGEMENT

20 ORANGE STREET
COVENT GARDEN



20 ORANGE STREET

The property is located on the south side of Orange Street, which links Haymarket and Charing Cross Road, close to its junction with Whitcomb Street. The area offers many amenities and facilities for both business and social purposes. The building is within a short walk of Piccadilly Circus, Leicester Square, and Charing Cross mainline station. Several bus routes are also within easy access.

The second floor has undergone a comprehensive refurbishment which now provides a high quality open plan floor with excellent light, capped services and raised floors.



CHARING CROSS
Walking - 3 mins



PICCADILLY CIRCUS
Walking - 3 mins

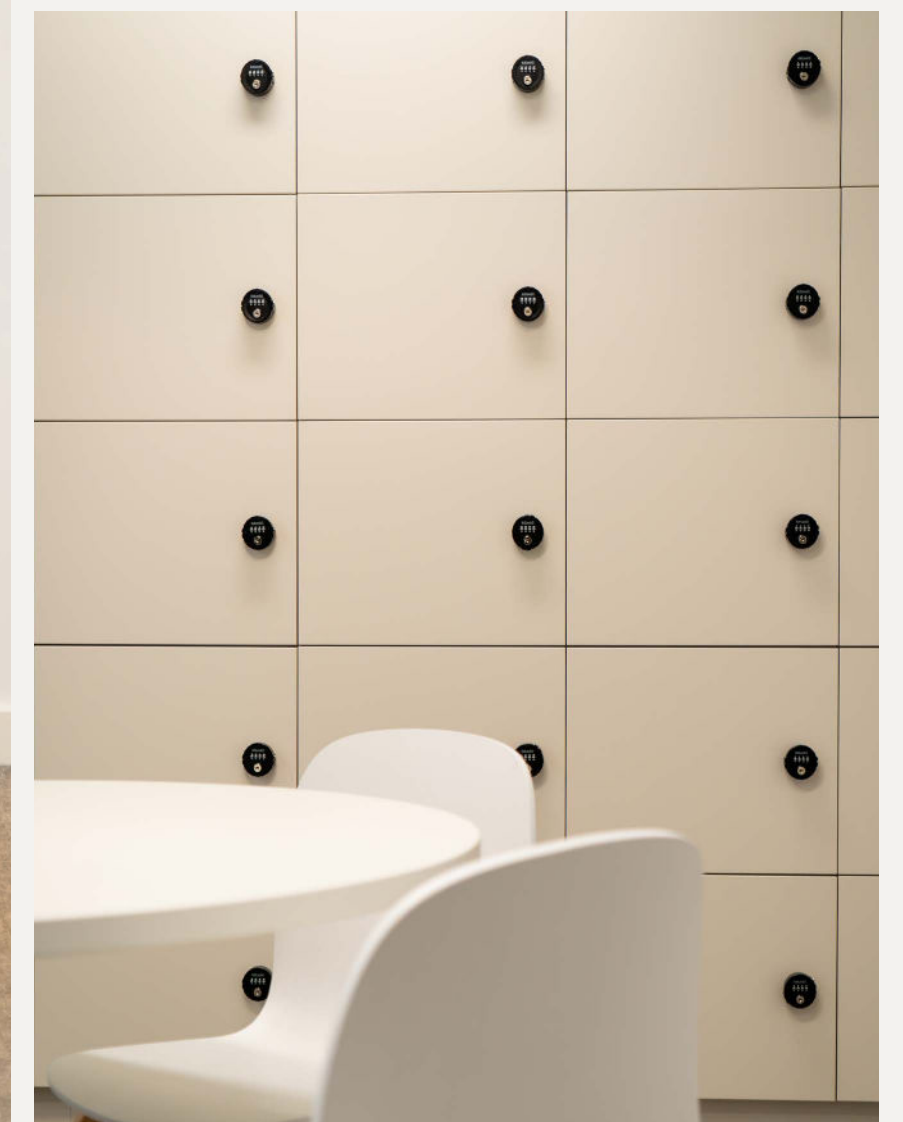


LEICESTER SQUARE
Walking - 4 mins



WHAT IS INCLUDED:

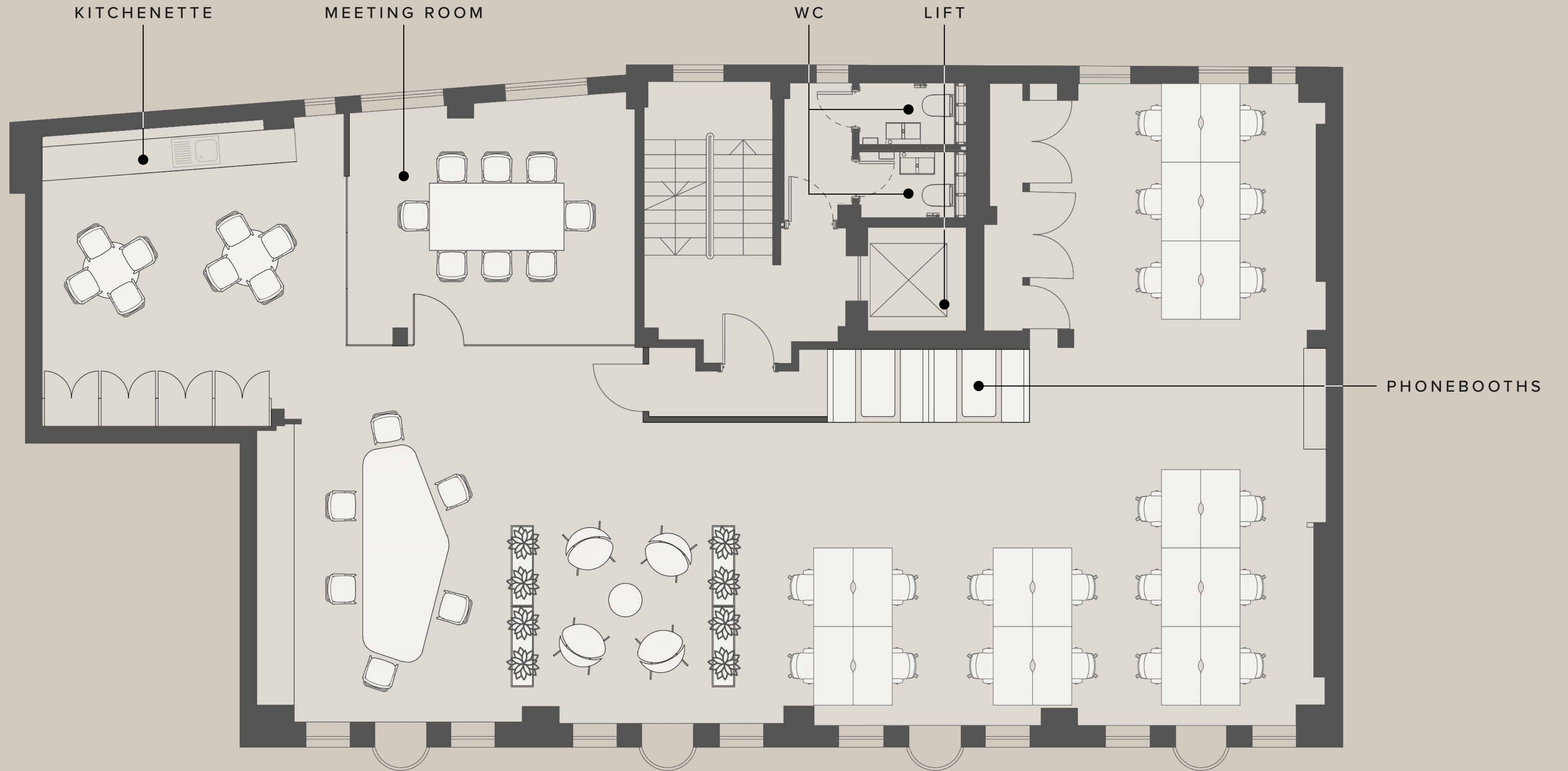
- [] All-Inclusive Managed Workspace
- [] Flexible terms of 24+ months available
- [] From 24 to 34 desks
- [] Fitted & Furnished Space
- [] Fully-Inclusive Monthly Fee
- [] In-House Maintenance & IT Support
- [] Enterprise-Level Resilient Bandwidth
- [] Daily Cleaning & Facilities Management
- [] EPC Grade A
- [] Full Access to WorkPad Concierge, a Range of On-Demand Business, Technology & End-of-Journey Services



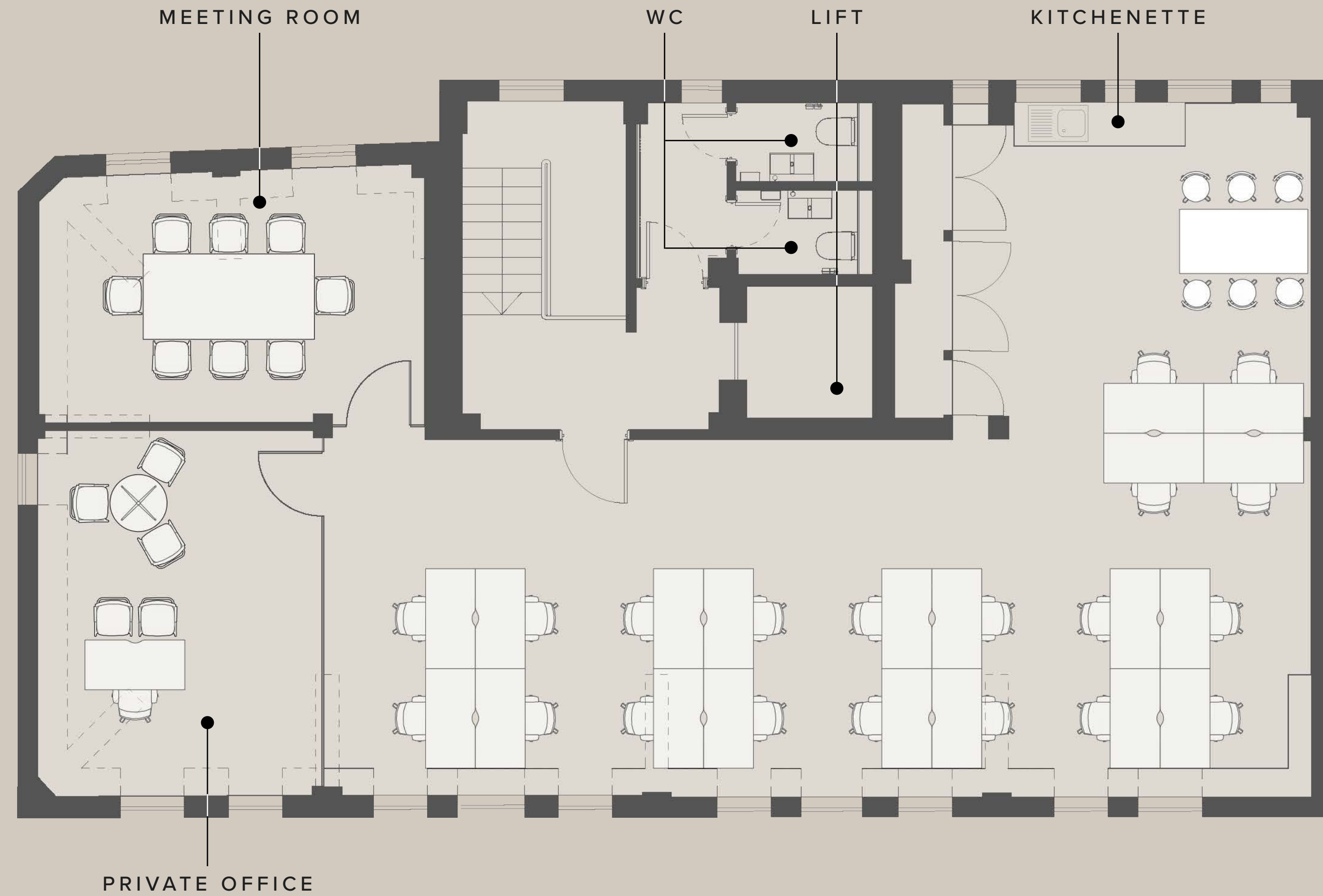
KEY FEATURES



FIRST FLOOR - 2103 SQFT



FIFTH FLOOR - 1438 SQFT





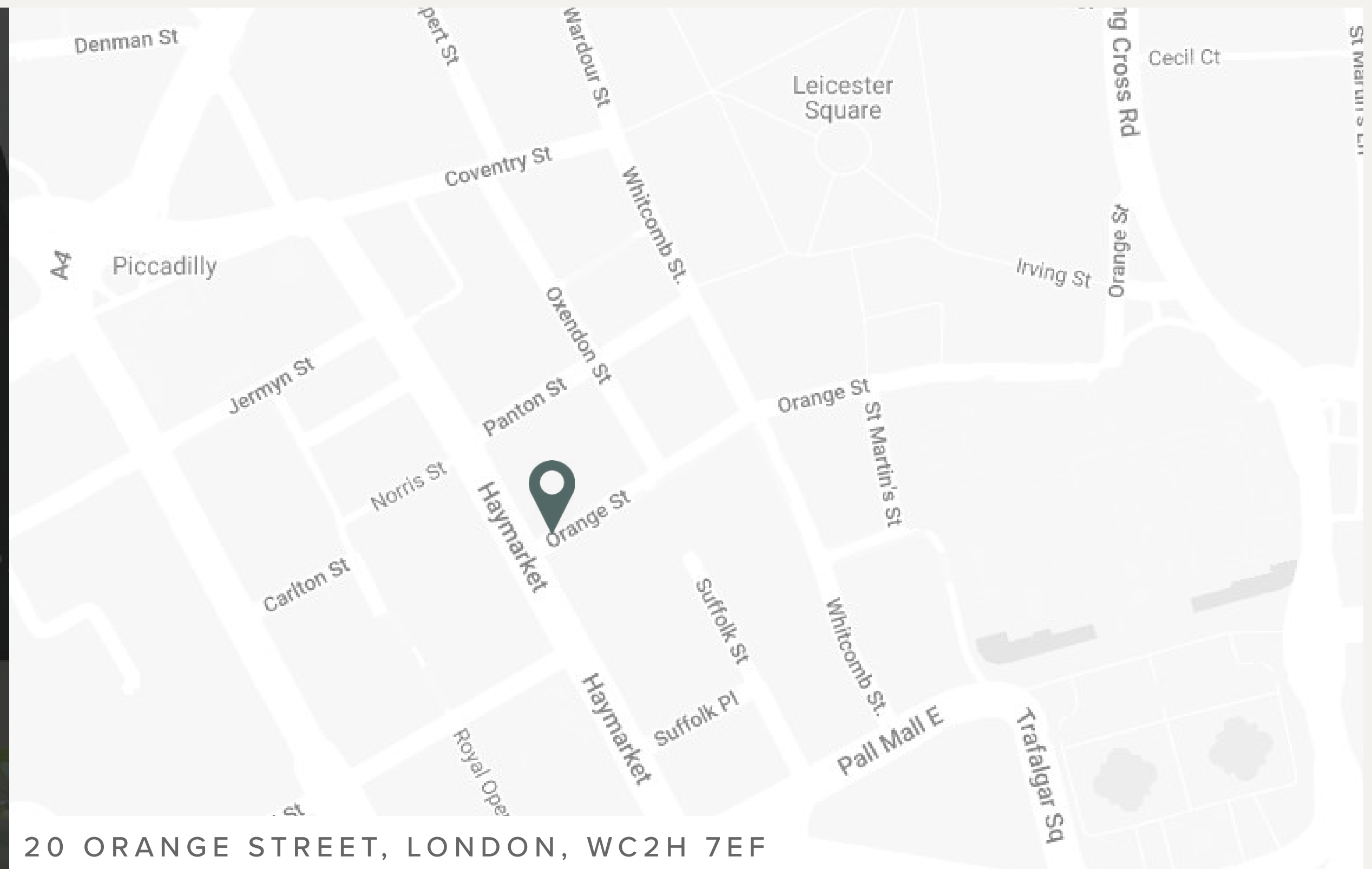
BOOK YOUR TOUR TODAY

Our team is dedicated to helping you explore our London buildings filled with unique spaces, personality and character.

Alternatively, you can view our building through a virtual tour below.

[BOOK VIEWING](#)

[VIRTUAL TOUR](#)



20 Orange Street

[]

WORKPAD

GROUP

SALES MANAGER - MATTHEW WRIGHT

07517730370

MATTHEW.W@WORKPAD.CO.UK

020 3835 5921
WWW.WORKPAD.CO.UK