



WORKPAD

MANAGEMENT

20 IRONMONGER LANE
CITY OF LONDON

city
caphé





20 IRONMONGER LANE

Ironmonger Lane is a particularly tranquil, cobble stoned street that lies between Cheapside and Gresham Street, located in the heart of the City of London and very close to The Bank of England. Bank Underground Station (Central, Northern, DLR, Waterloo & City Lines and the Circle and District lines via Monument) is less than 300 meters away.

Other stations including Moorgate and Liverpool Street are also close by. Cheapside is one of the City's principle retailing destinations offering a diverse range of retail, restaurants and cafes.



BANK
Walking - 3 mins



MOORGATE
Walking - 6 mins

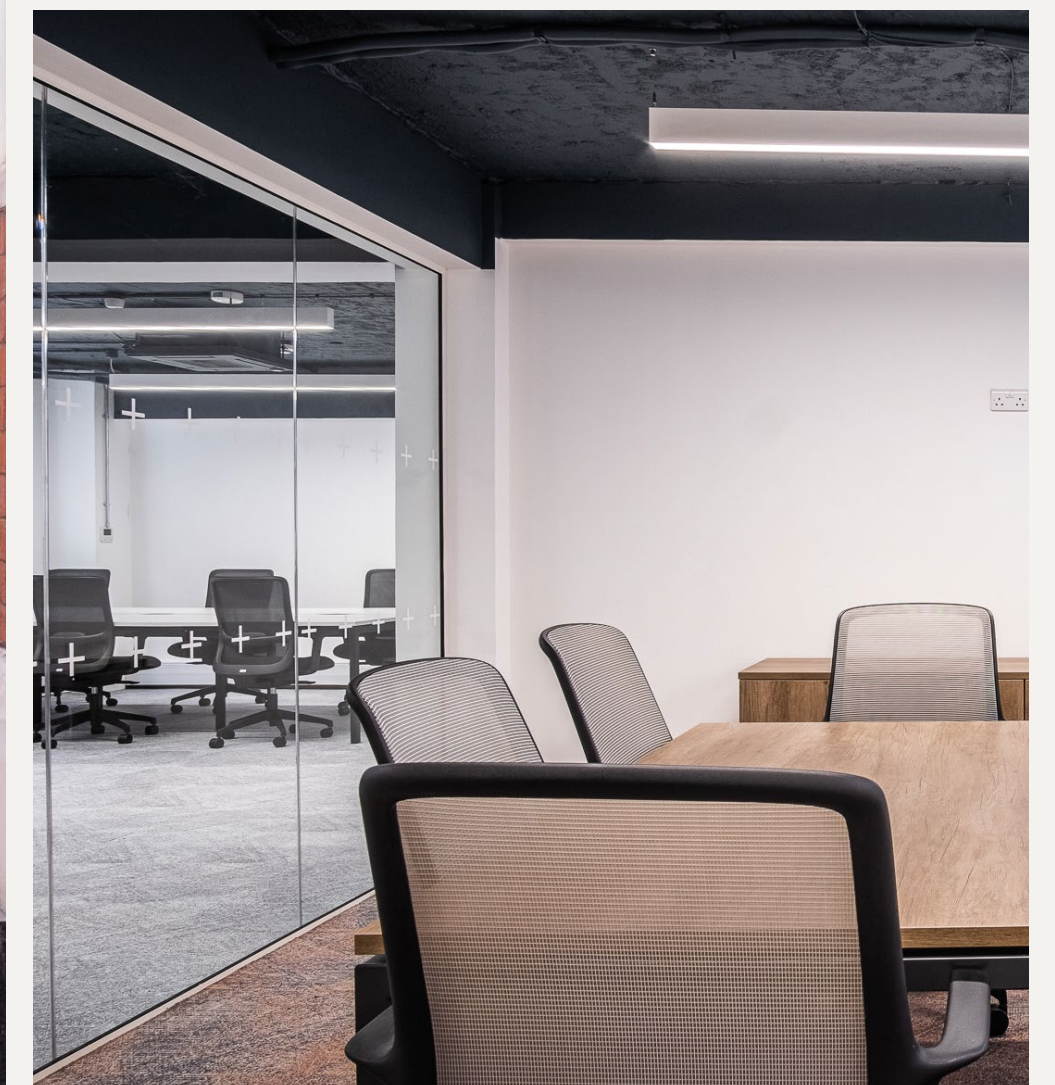


LIVERPOOL STREET
Walking - 8 mins

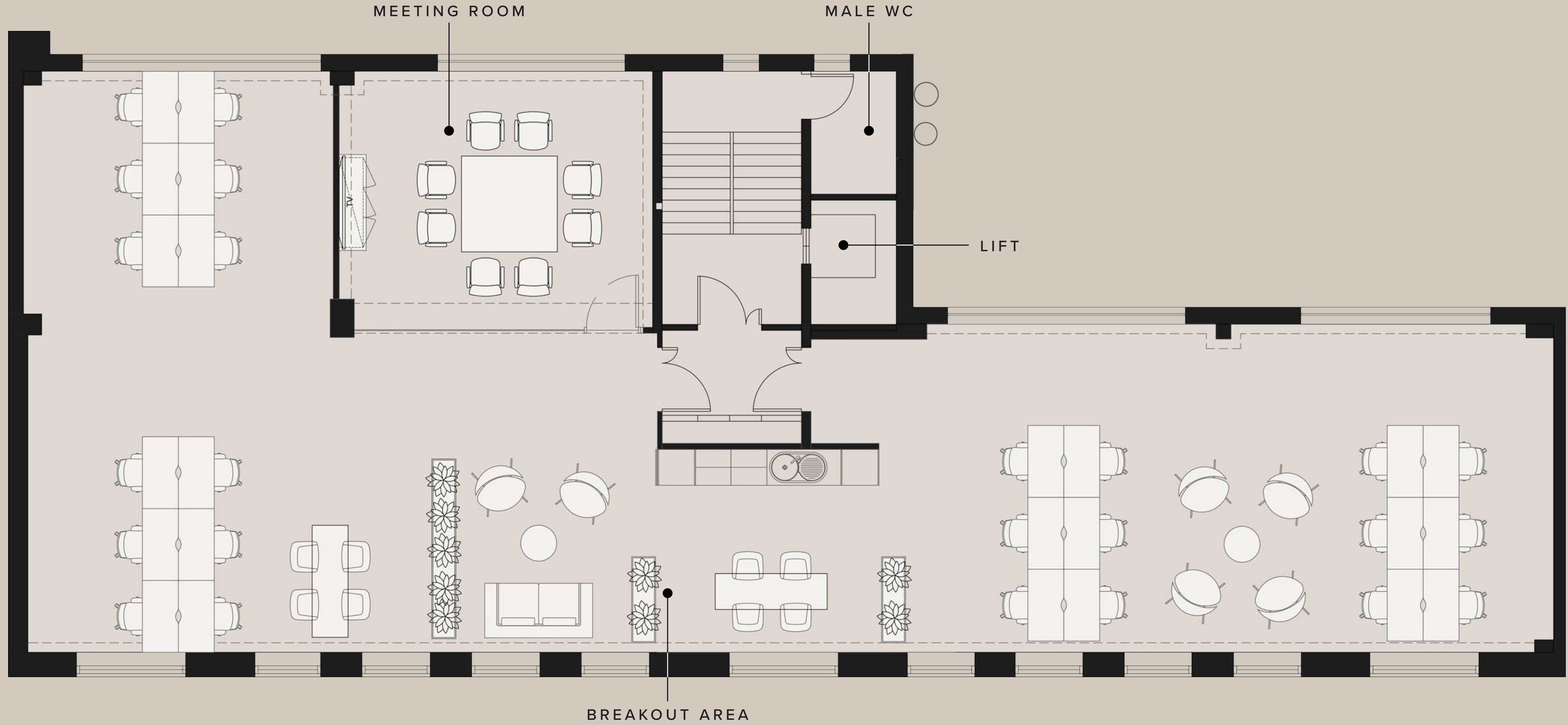


WHAT IS INCLUDED:

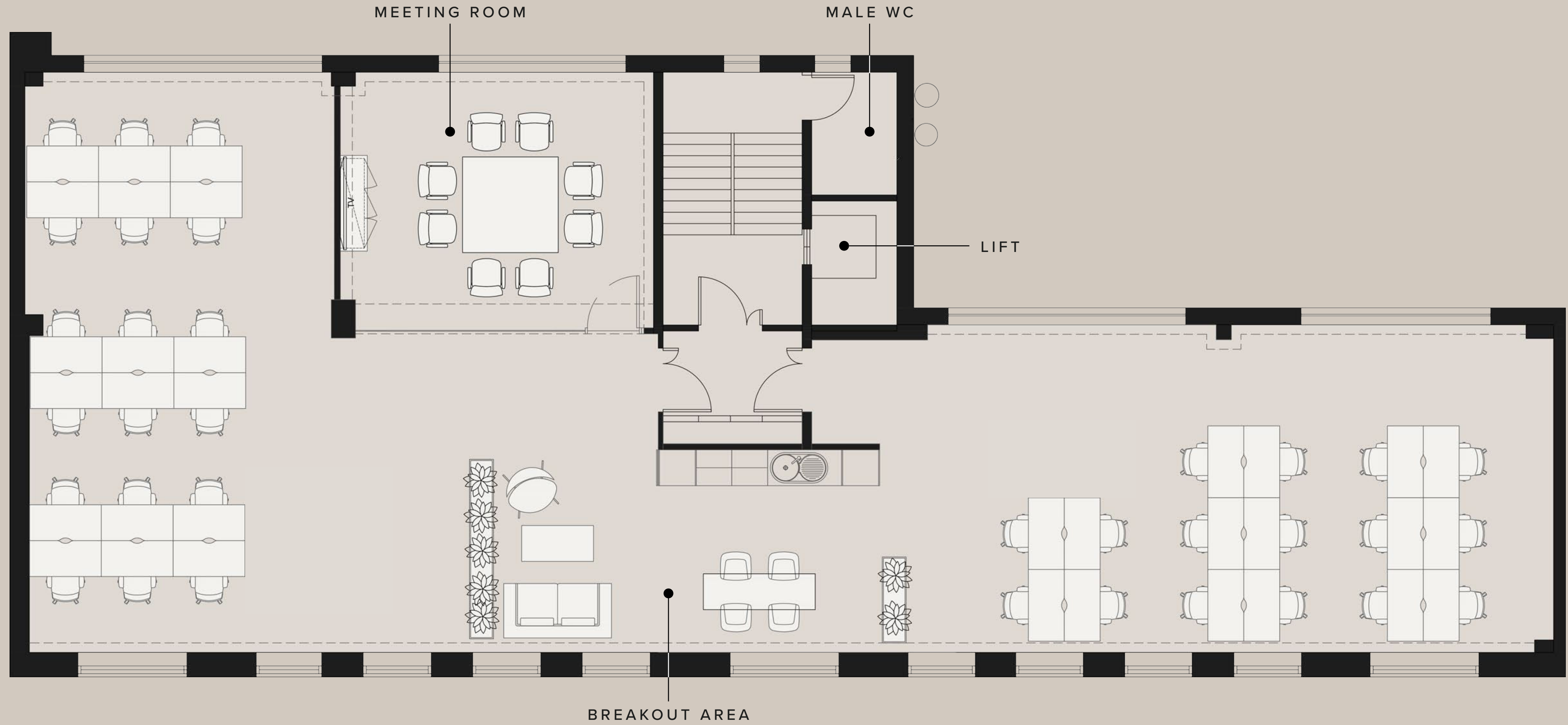
- [] All-Inclusive Managed Workspace
- [] Flexible terms of 24+ months available
- [] From 24 to 34 desks
- [] Fitted & Furnished Space
- [] Fully-Inclusive Monthly Fee
- [] In-House Maintenance & IT Support
- [] Enterprise-Level Resilient Bandwidth
- [] Daily Cleaning & Facilities Management
- [] EPC Grade A
- [] Full Access to WorkPad Concierge, a Range of On-Demand Business, Technology & End-of-Journey Services







THIRD FLOOR OPTION 1 - 24-DESK LAYOUT



THIRD FLOOR OPTION 2 - 34-DESK LAYOUT



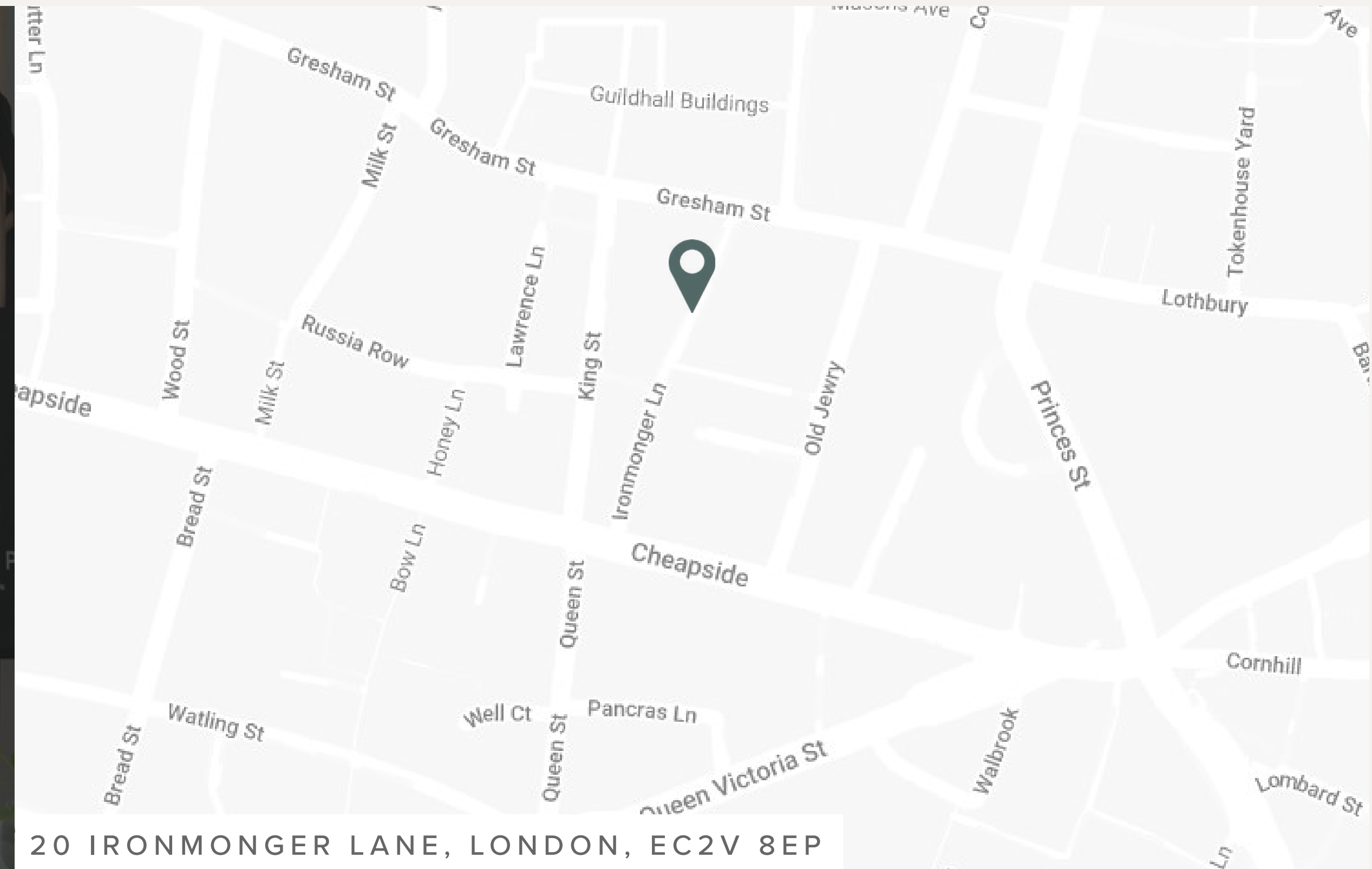
BOOK YOUR TOUR TODAY

To book a tour of the space, please click below:

Alternatively, to view the floor via our virtual platform, click here:

BOOK VIEWING

VIRTUAL TOUR





WORKPAD

MANAGEMENT

SALES MANAGER - MATTHEW WRIGHT

07517 730 370

MATTHEW.W@WORKPAD.CO.UK

020 3835 2359

WWW.WORKPAD.CO.UK