



WORKPAD

34-35 BERWICK STREET
SOHO




34-35 BERWICK STREET

An exceptional property located in the heart of Soho, one of London's most vibrant and culturally rich neighborhoods. Boasting a prime location in this bustling area, this property is ideal for businesses seeking a central base that will give them easy access to all that London has to offer. With a range of beautifully designed and versatile office spaces, our property provides the perfect environment for businesses of all sizes, from startups to established companies.

 TOTTENHAM COURT ROAD
Walking - 3 mins

 OXFORD CIRCUS
Walking - 5 mins

 PICCADILLY CIRCUS
Walking - 6 mins

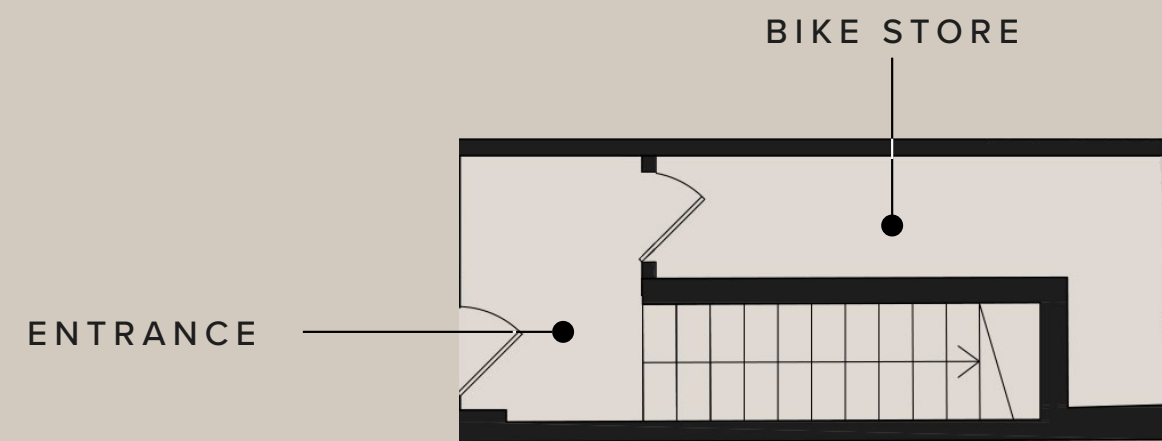


WHAT'S INCLUDED?

- All Inclusive & Flexible Contracts
- Building Rates & All Utilities
- In-House Maintenance & IT Support
- Daily Cleaning
- Communal Meeting Room
- Communal Kitchen
- Bicycle Storage & Shower Facilities
- Air Conditioning



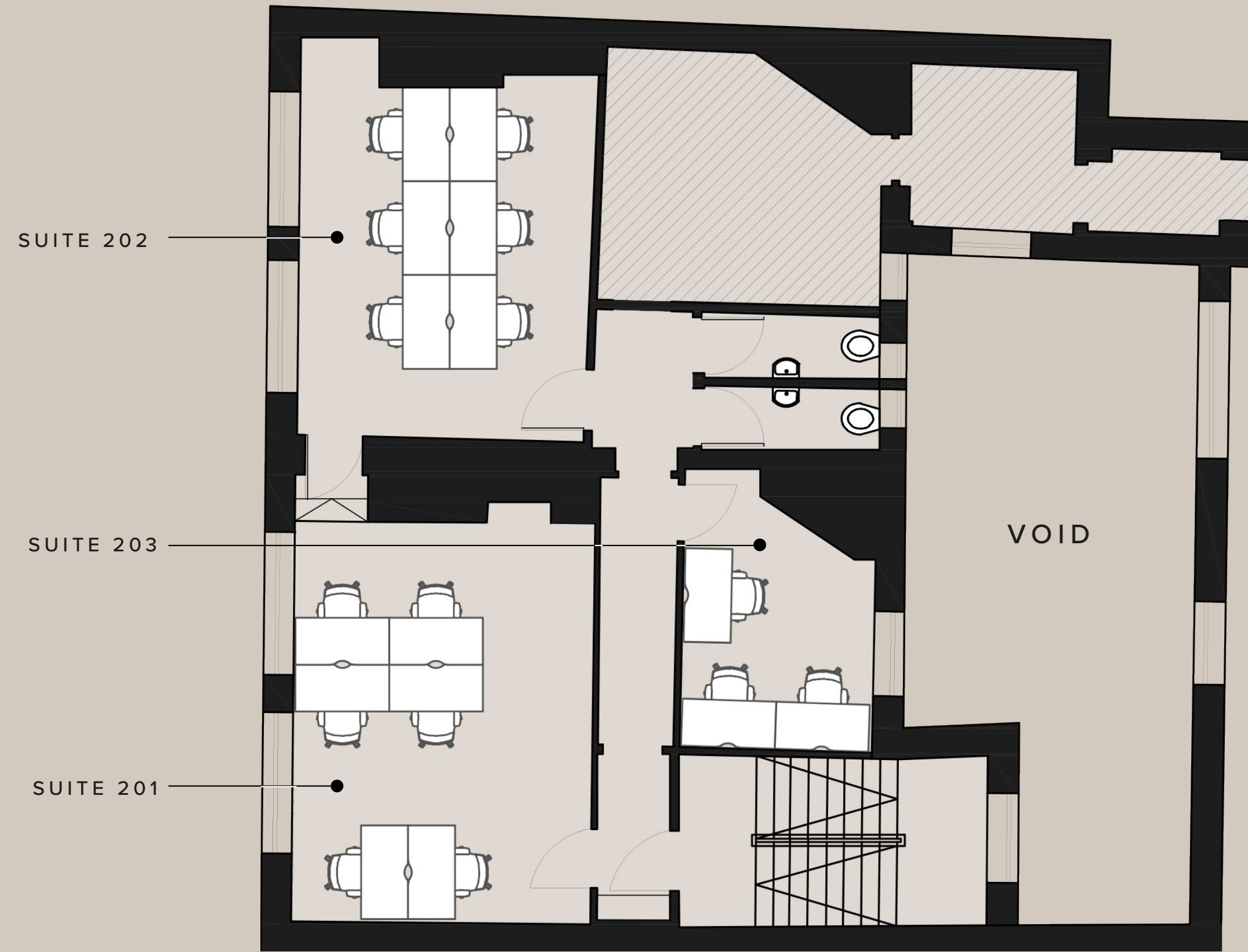




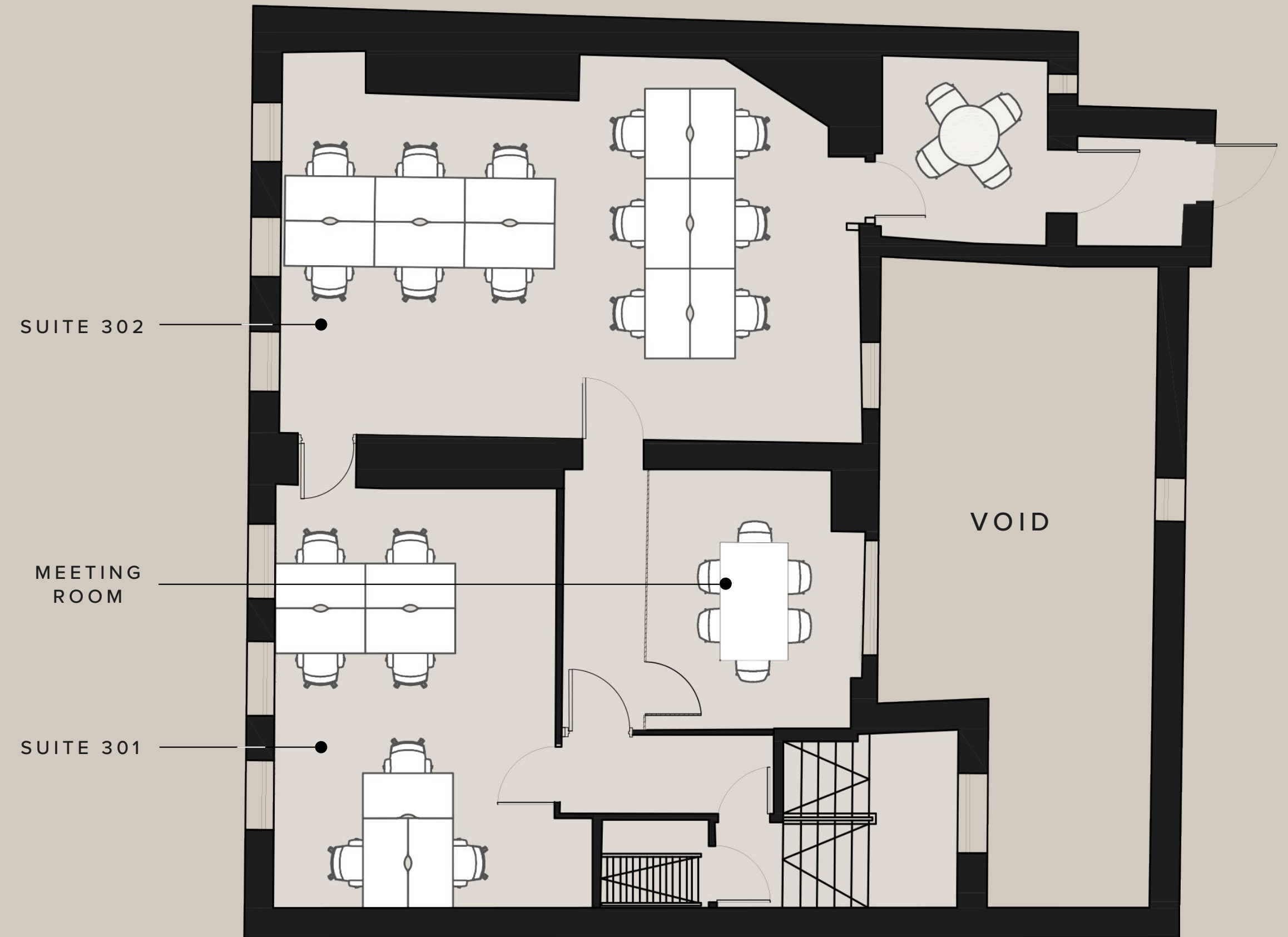
GROUND FLOOR



FIRST FLOOR



SECOND FLOOR



THIRD FLOOR

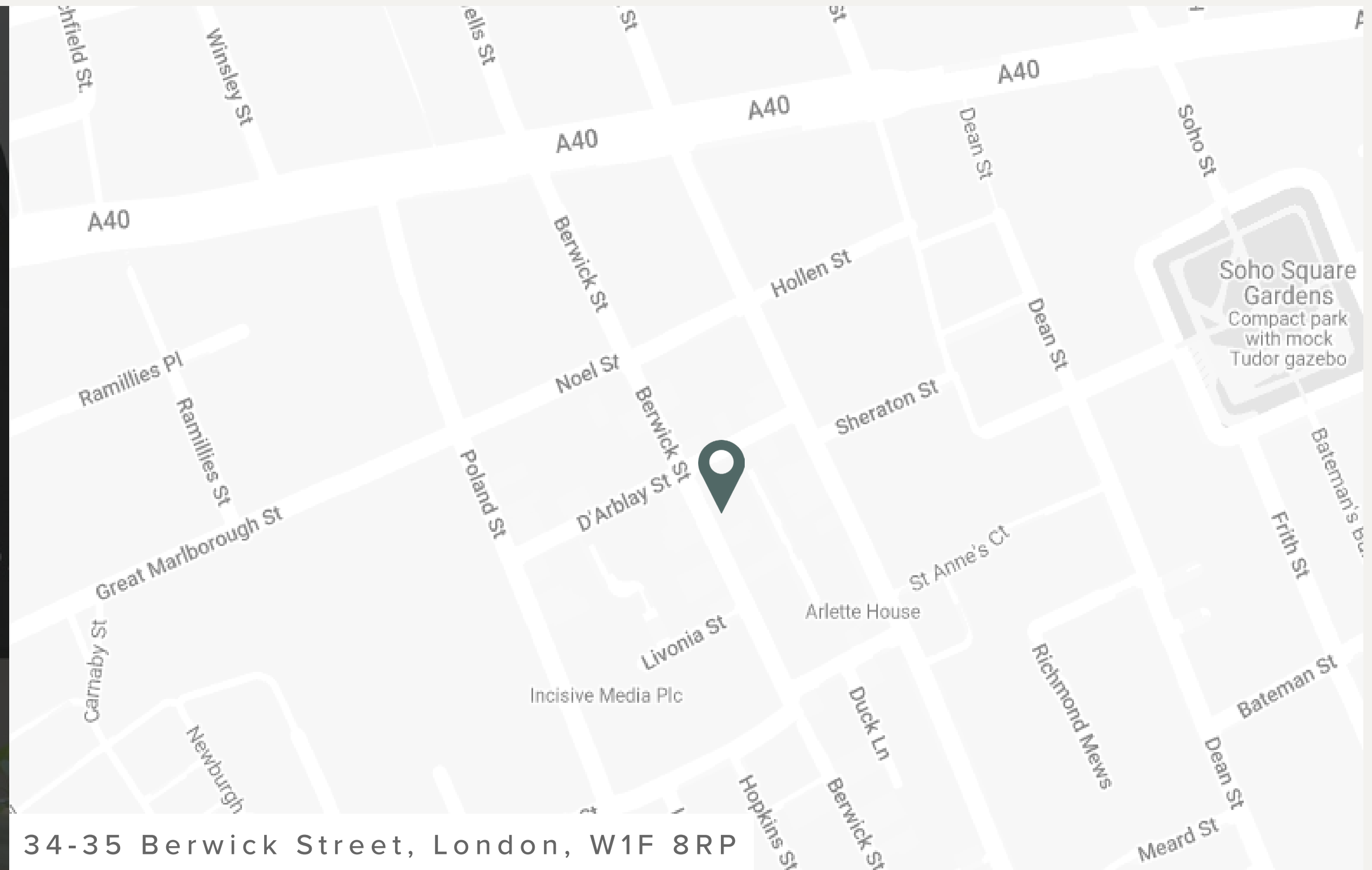


BOOK YOUR TOUR TODAY

Our team is dedicated to helping you explore our London buildings filled with unique spaces, personality and character.

BOOK VIEWING

VIRTUAL TOUR



34-35 Berwick Street, London, W1F 8RP



DESIGN TAILORED TO YOU

At WorkPad we understand that when considering reorganisation of your existing offices, or undertaking a new office refurbishment, selecting the correct furniture is vital to delivering an office environment that works for you.

We aspire to make this process simple; with an array of designs grown out of years of experience and close cooperation with our clients, you can select individual or packaged designs, or speak to our stylist for a larger array.

[EXPLORE BESPOKE](#)



3D Visualisation produced by our in-house Design Team



Book a viewing today:

020 7788 7507
enquiries@workpad.co.uk
www.workpad.co.uk

16 Stanhope Place
London
W2 2HH

