



# WORKPAD

2 BLOOMSBURY PLACE  
HOLBORN

BOOK A VIEWING



TAKE A VIRTUAL TOUR


SEND US A WHATSAPP | CONTACT FORM



## 2 BLOOMSBURY PLACE

2 Bloomsbury Place is conveniently located in the heart of Holborn, situated next to our existing office 3 Bloomsbury Place, it's home to an array of garden squares and some of London's finest cultural riches.

Benefiting from an abundance of natural light and original period features, this boutique period property provides ten unique and private office suites varying in size. The building also includes a communal breakout space and garden.

 **HOLBORN**  
Walking - 5 mins

 **RUSSEL SQUARE**  
Walking - 6 mins

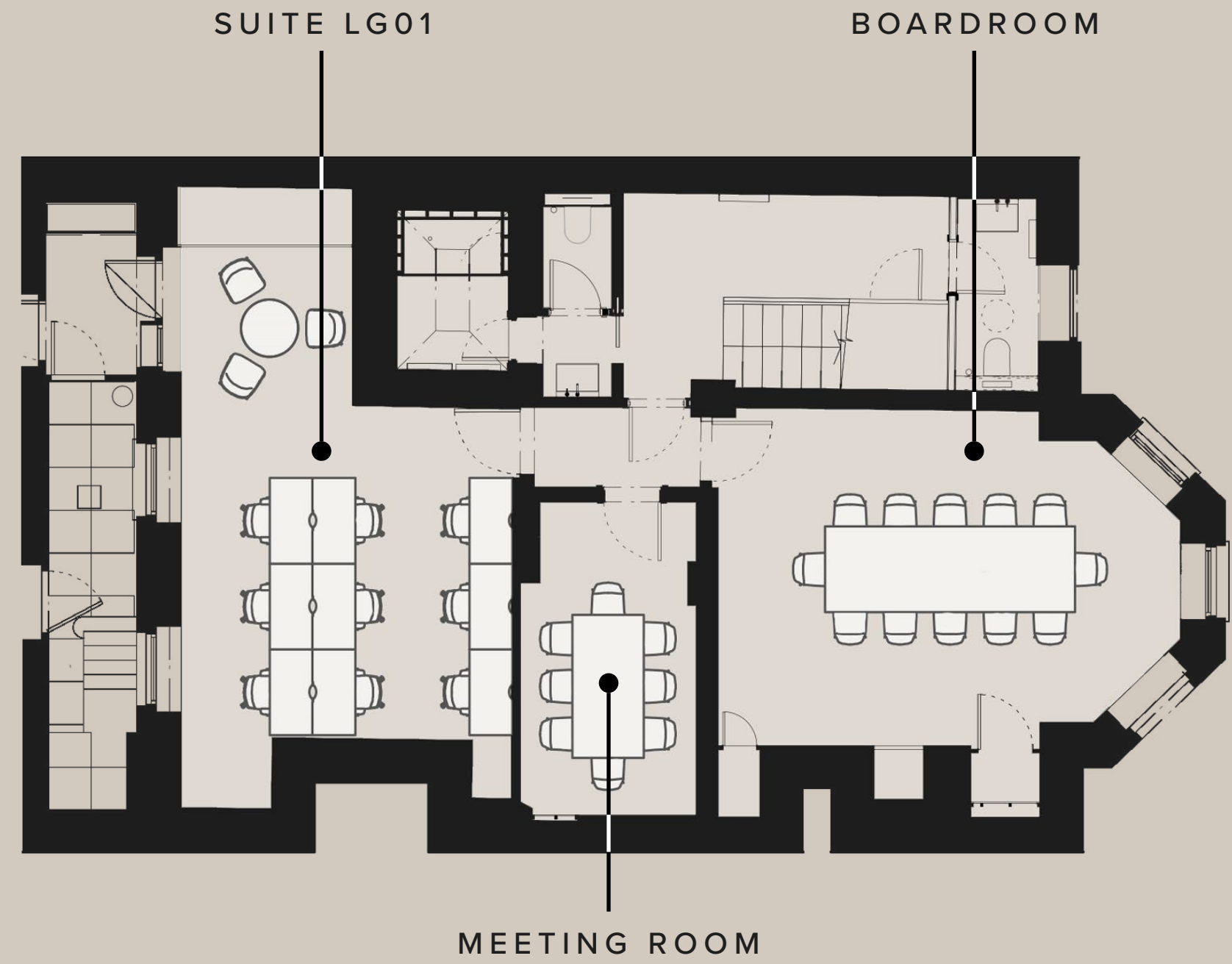
 **TOTTENHAM COURT ROAD**  
Walking - 8 mins



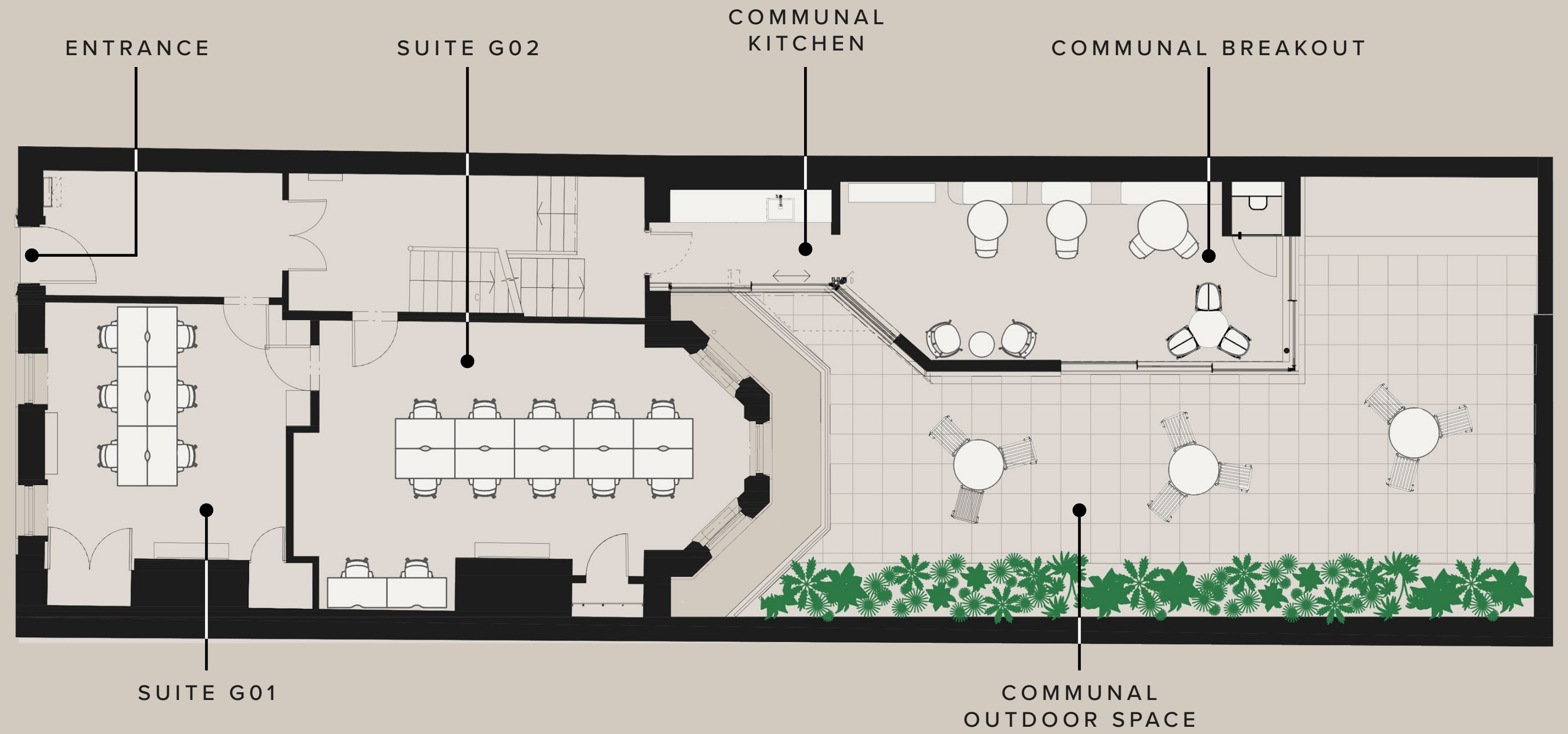
## WHAT'S INCLUDED?

- All Inclusive & Flexible Contacts
- Building Rates & All Utilities
- Communal Kitchens
- Communal Breakout Space
- Communal Outdoor Space
- Communal Meeting Rooms
- In-House Maintenance & IT Support
- Daily Cleaning

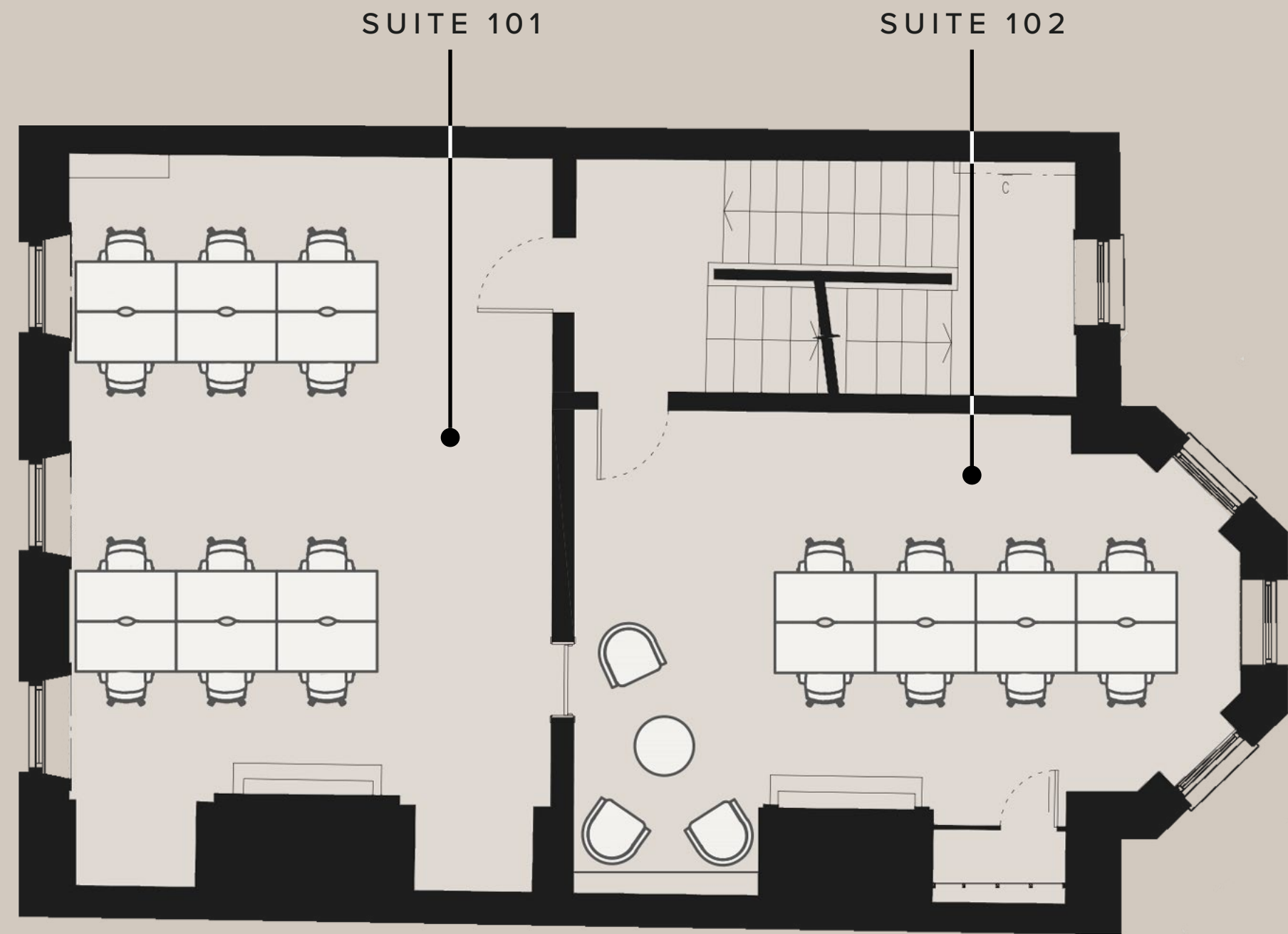




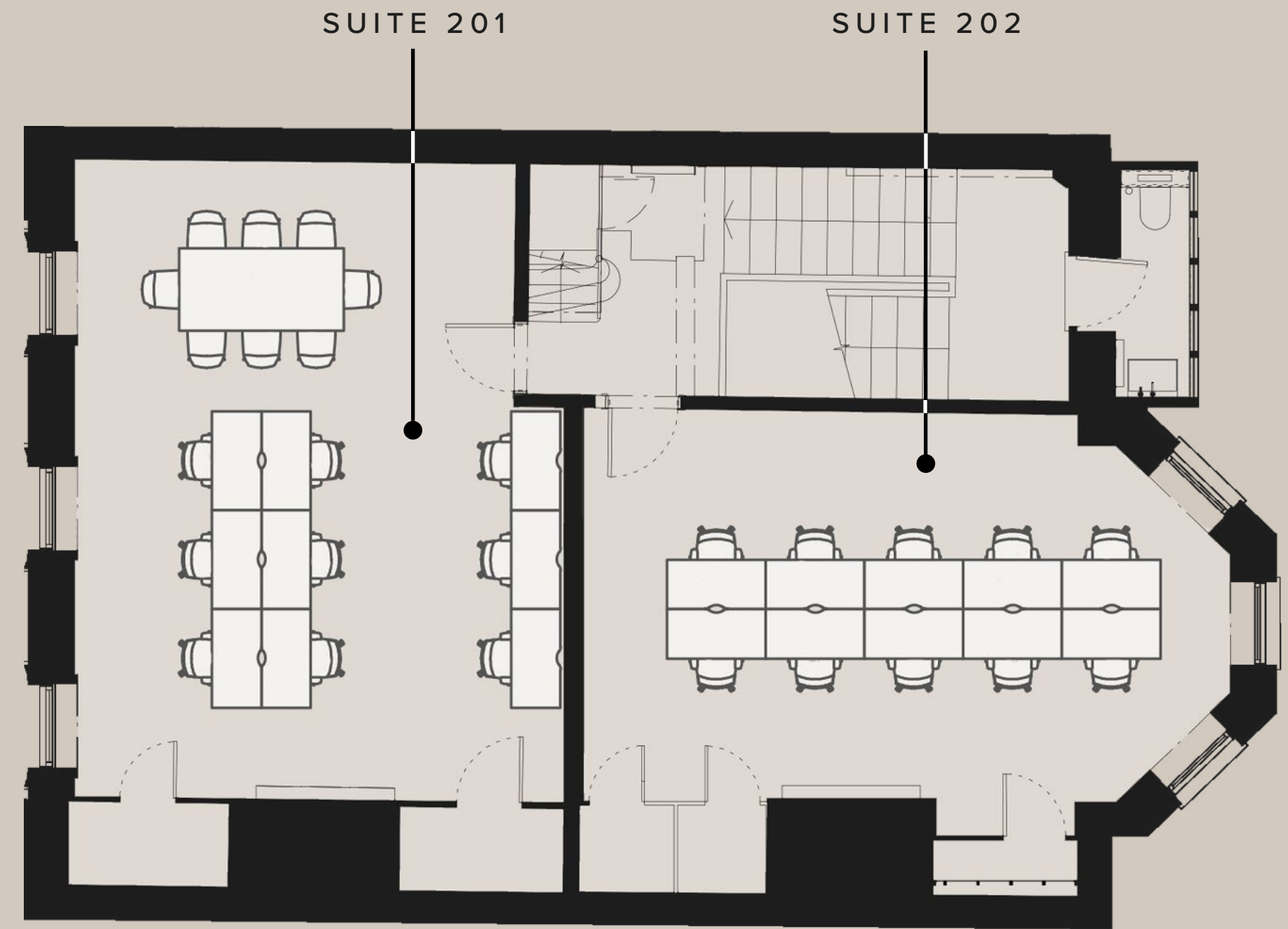
LOWER GROUND FLOOR



GROUND FLOOR



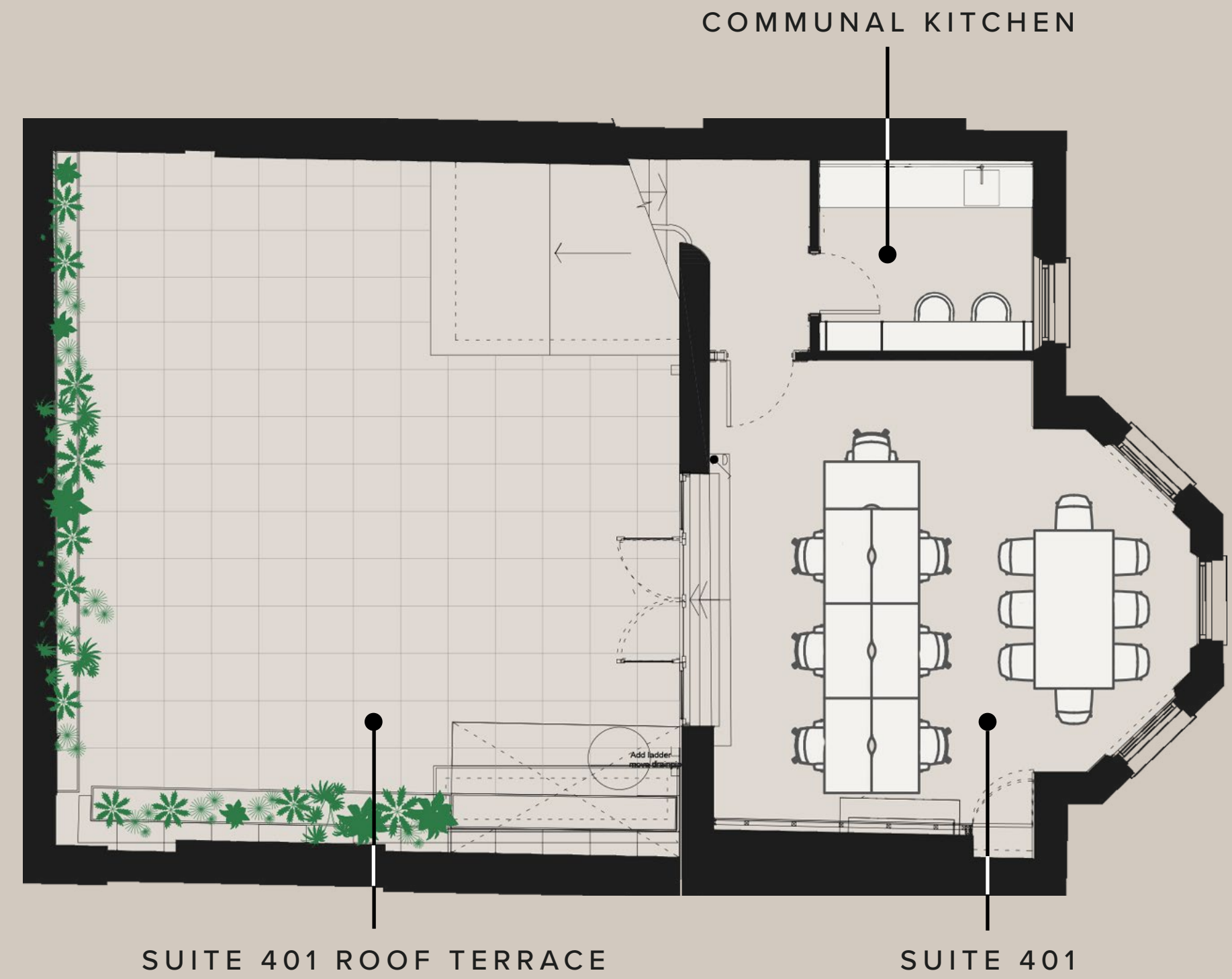
FIRST FLOOR



SECOND FLOOR



THIRD FLOOR



FOURTH FLOOR



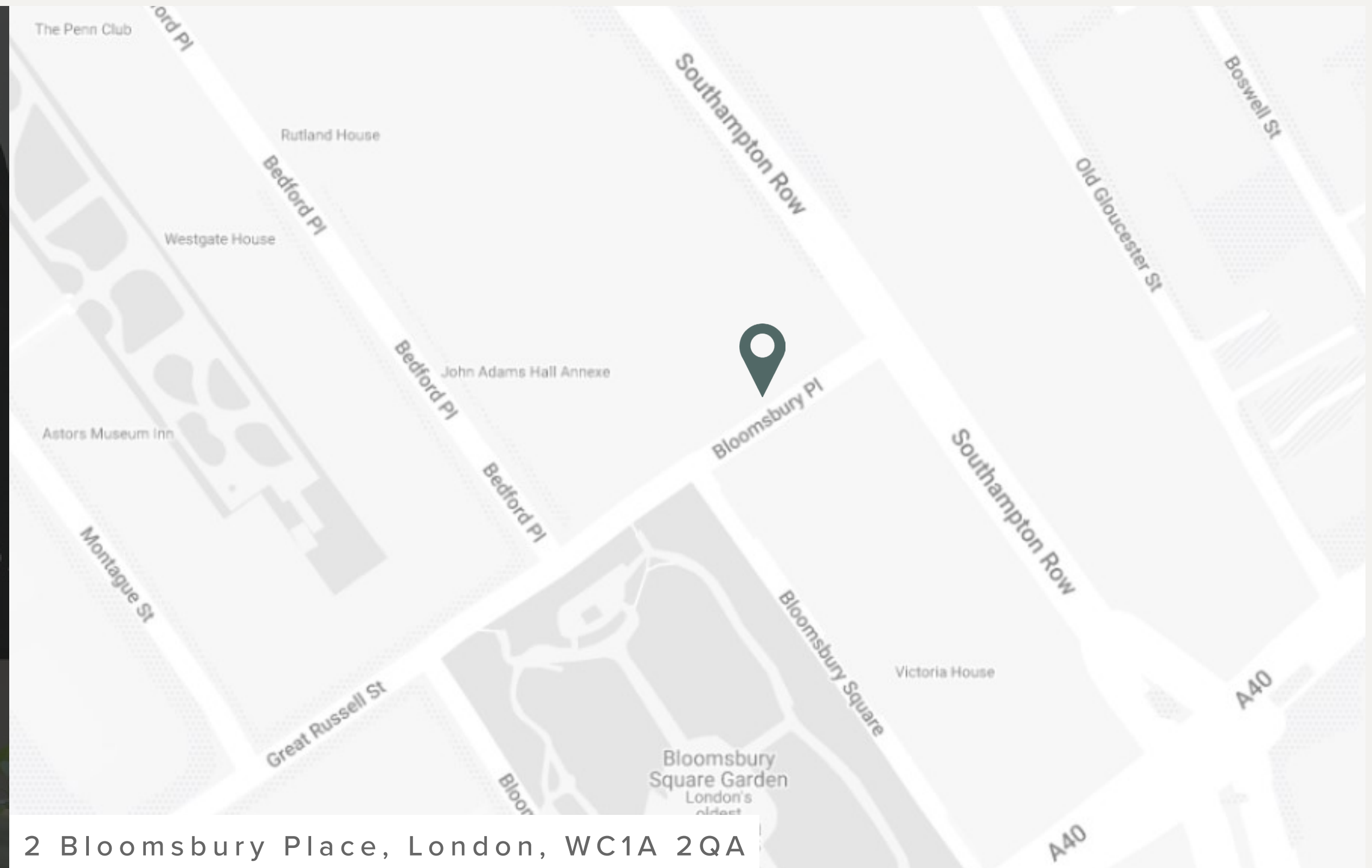
## BOOK YOUR TOUR TODAY

Our team is dedicated to helping you explore our London buildings filled with unique spaces, personality and character.

Alternatively, you can view our building through a virtual tour below.

BOOK VIEWING

VIRTUAL TOUR



2 Bloomsbury Place, London, WC1A 2QA





## DESIGN TAILORED TO YOU

At WorkPad we understand that when considering reorganisation of your existing offices, or undertaking a new office refurbishment, selecting the correct furniture is vital to delivering an office environment that works for you.

We aspire to make this process simple; with an array of designs grown out of years of experience and close cooperation with our clients, you can select individual or packaged designs, or speak to our stylist for a larger array.

EXPLORE BESPOKE



3D Visualisation produced by our in-house Design Team



Book a viewing today:

020 7788 7507  
enquiries@workpad.co.uk  
www.workpad.co.uk

16 Stanhope Place  
London  
W2 2HH

