



WORKPAD

3 BLOOMSBURY PLACE
HOLBORN



BOOK A VIEWING






3 BLOOMSBURY PLACE

Conveniently located in the heart of Holborn, home to an array of garden squares and some of London's finest cultural riches.

The building has been extensively restored, benefiting from an abundance of natural light and original period features.

 **HOLBORN**
Walking - 5 mins

 **RUSSELL SQAURE**
Walking - 6 mins

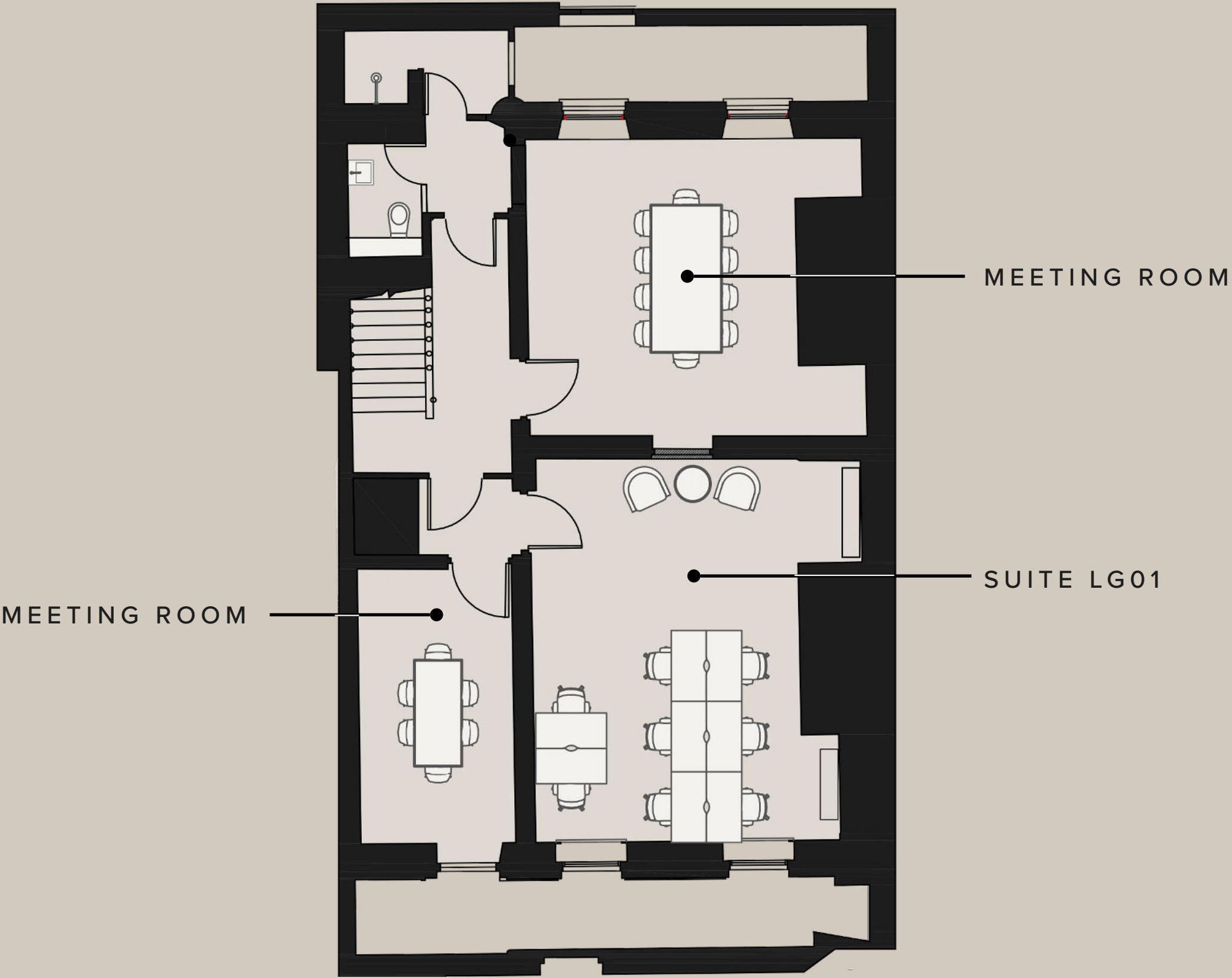
 **TOTTENHAM COURNT ROAD**
Walking - 8 mins



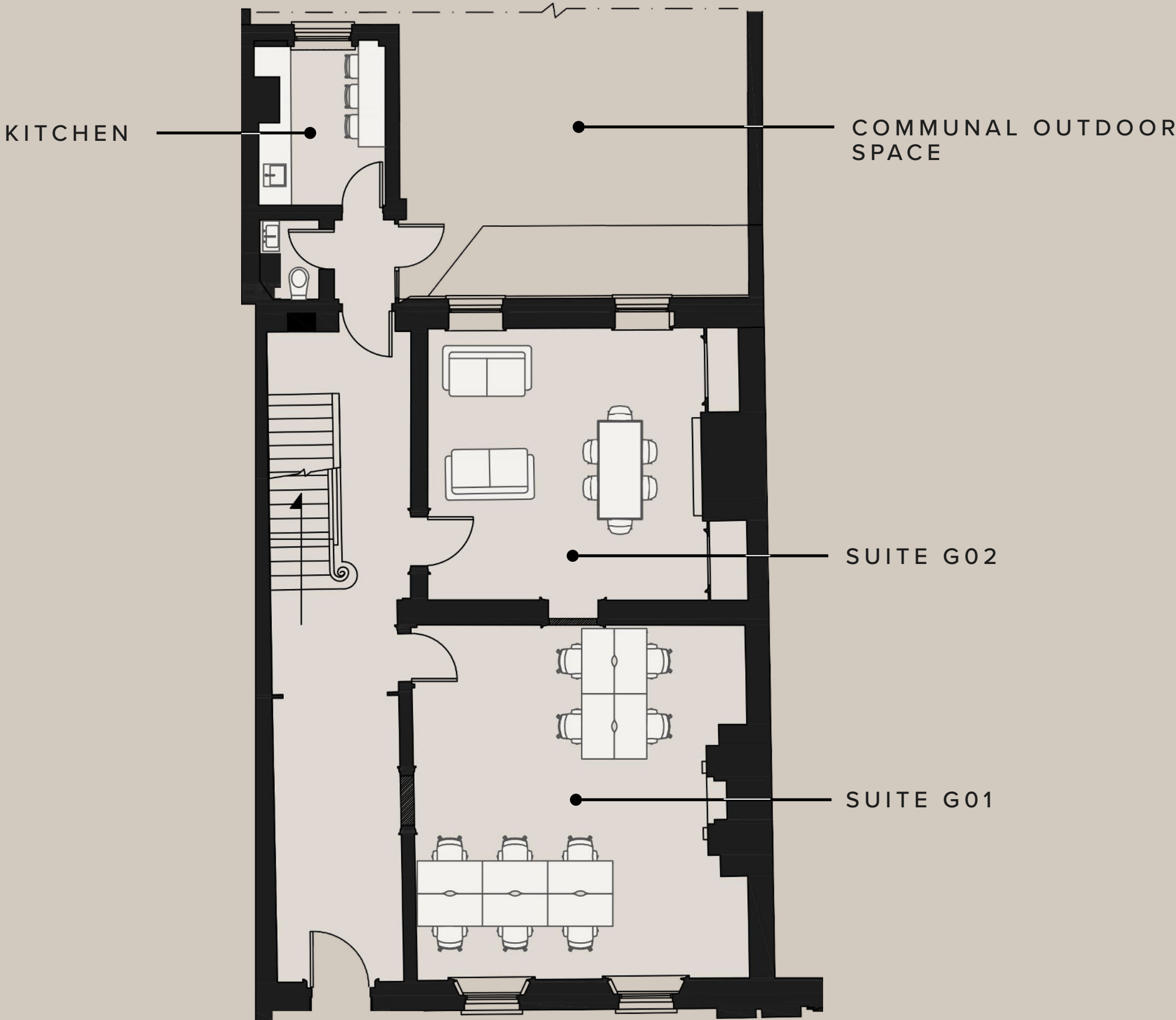
WHAT'S INCLUDED?

- [] All Inclusive & Flexible Contacts
- [] Building Rates & All Utilities
- [] Communal Kitchens
- [] Communal Outdoor Space
- [] Communal Meeting Rooms
- [] In-House Maintenance & IT Support
- [] Daily Cleaning

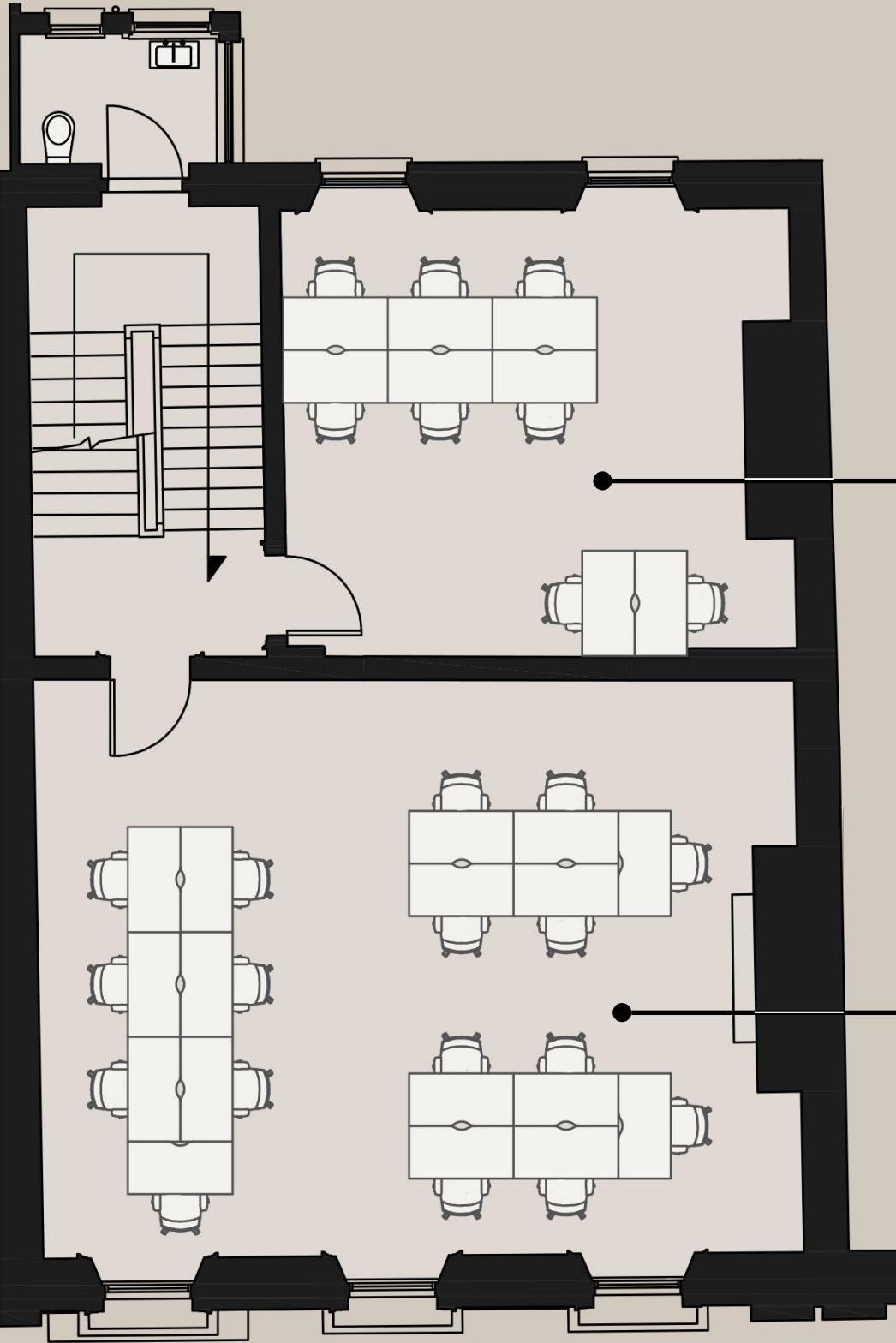




LOWER GROUND FLOOR



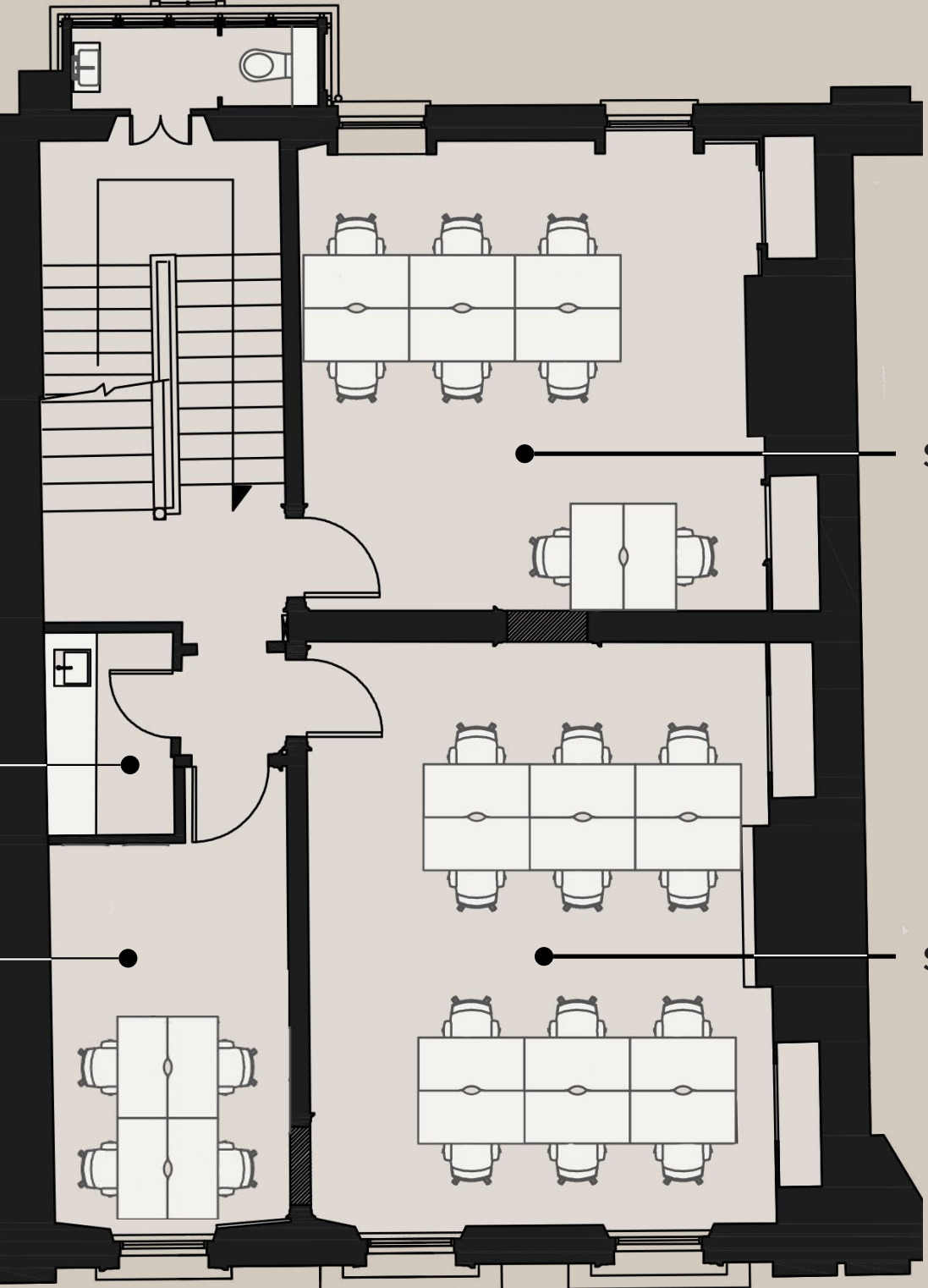
GROUND FLOOR



SUITE 102

SUITE 101

FIRST FLOOR



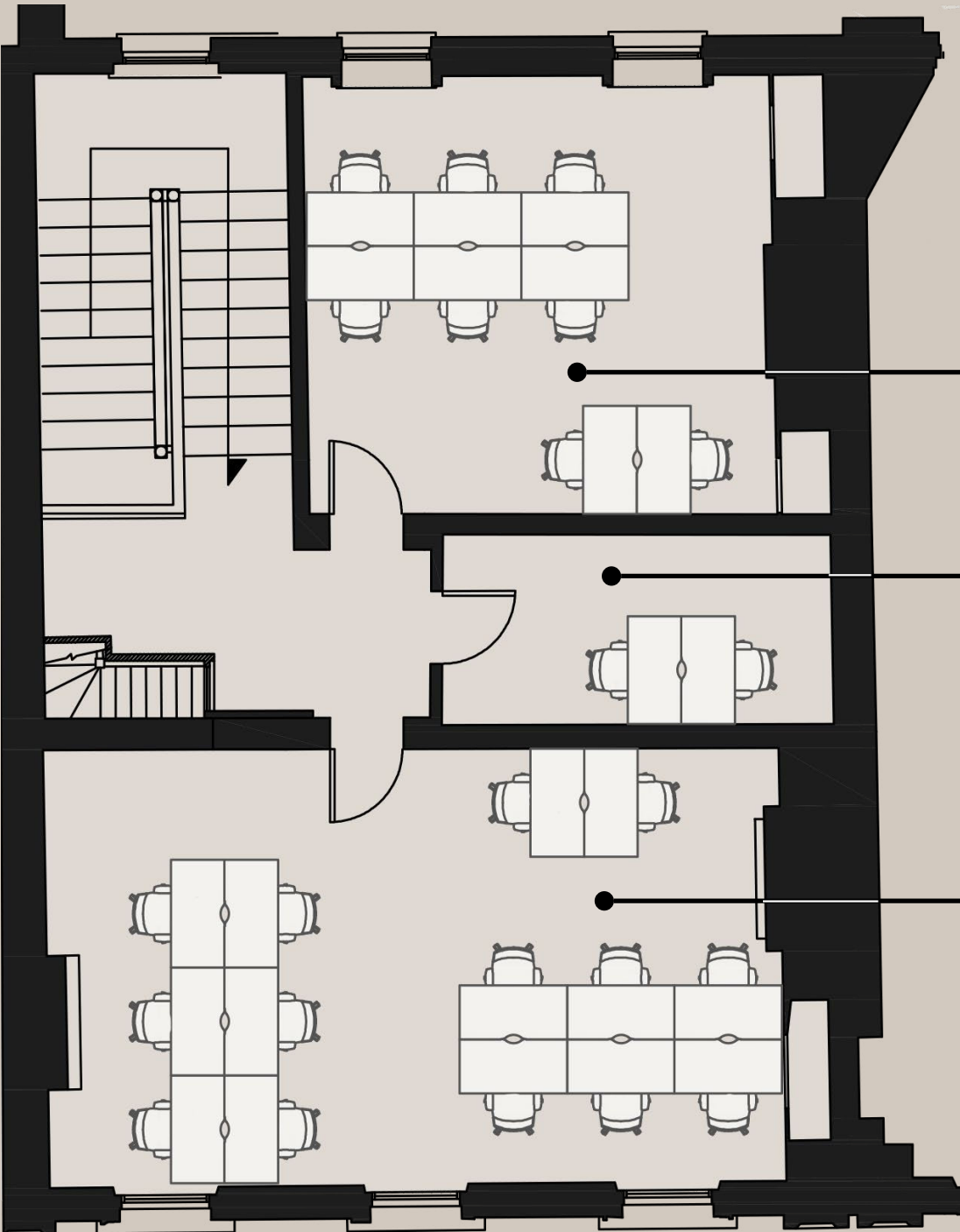
KITCHEN

SUITE 201

SUITE 203

SUITE 202

SECOND FLOOR



SUITE 303

SUITE 302

SUITE 301

THIRD FLOOR



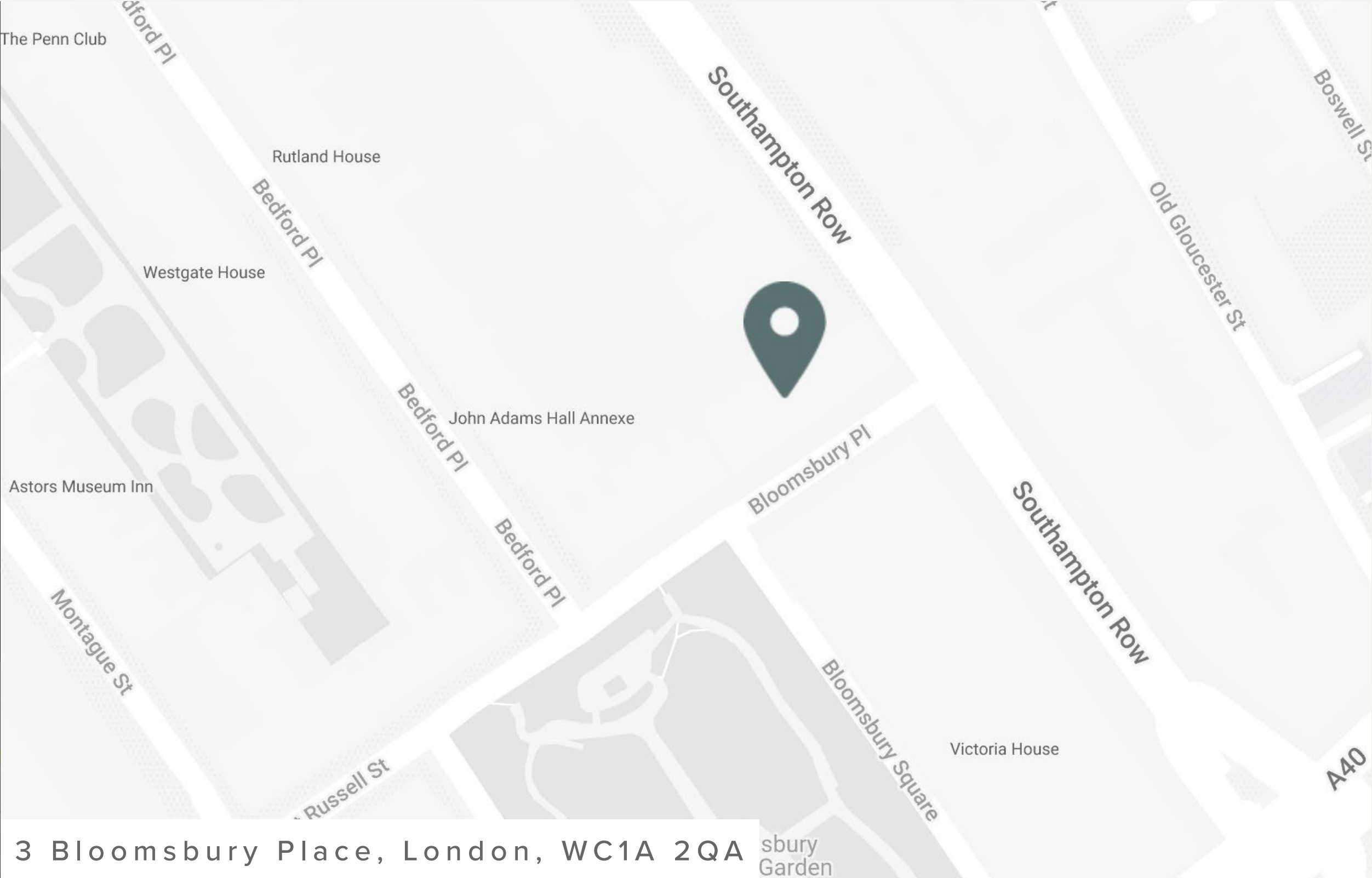
BOOK YOUR TOUR TODAY

Our team is dedicated to helping you explore our London buildings filled with unique spaces, personality and character.

Alternatively, you can view our building through a virtual tour below.

BOOK VIEWING

VIRTUAL TOUR



DESIGN TAILORED TO YOU

At WorkPad we understand that when considering reorganisation of your existing offices, or undertaking a new office refurbishment, selecting the correct furniture is vital to delivering an office environment that works for you.

We aspire to make this process simple; with an array of designs grown out of years of experience and close cooperation with our clients, you can select individual or packaged designs, or speak to our stylist for a larger array.

[EXPLORE BESPOKE](#)

3D Visualisation produced by our in-house Design Team



Book a viewing today:

020 7788 7507
enquiries@workpad.co.uk
www.workpad.co.uk

16 Stanhope Place
London
W2 2HH

