

[ ]

# WORKPAD

9-11 BROADWICK STREET  
SOHO





BOOK A VIEWING








## 9-11 BROADWICK STREET

Broadwick Street is located within the heart of iconic Soho with easy access to the fantastic amenities of the area. The building has undergone an extensive refurbishment, and owing to its unique corner location, benefits from an abundance of natural light.

 **PICCADILY CIRCUS**  
Walking - 5 mins

 **TOTTENHAM COURT ROAD**  
Walking - 5 mins

 **OXFORD CIRCUS**  
Walking - 6 mins



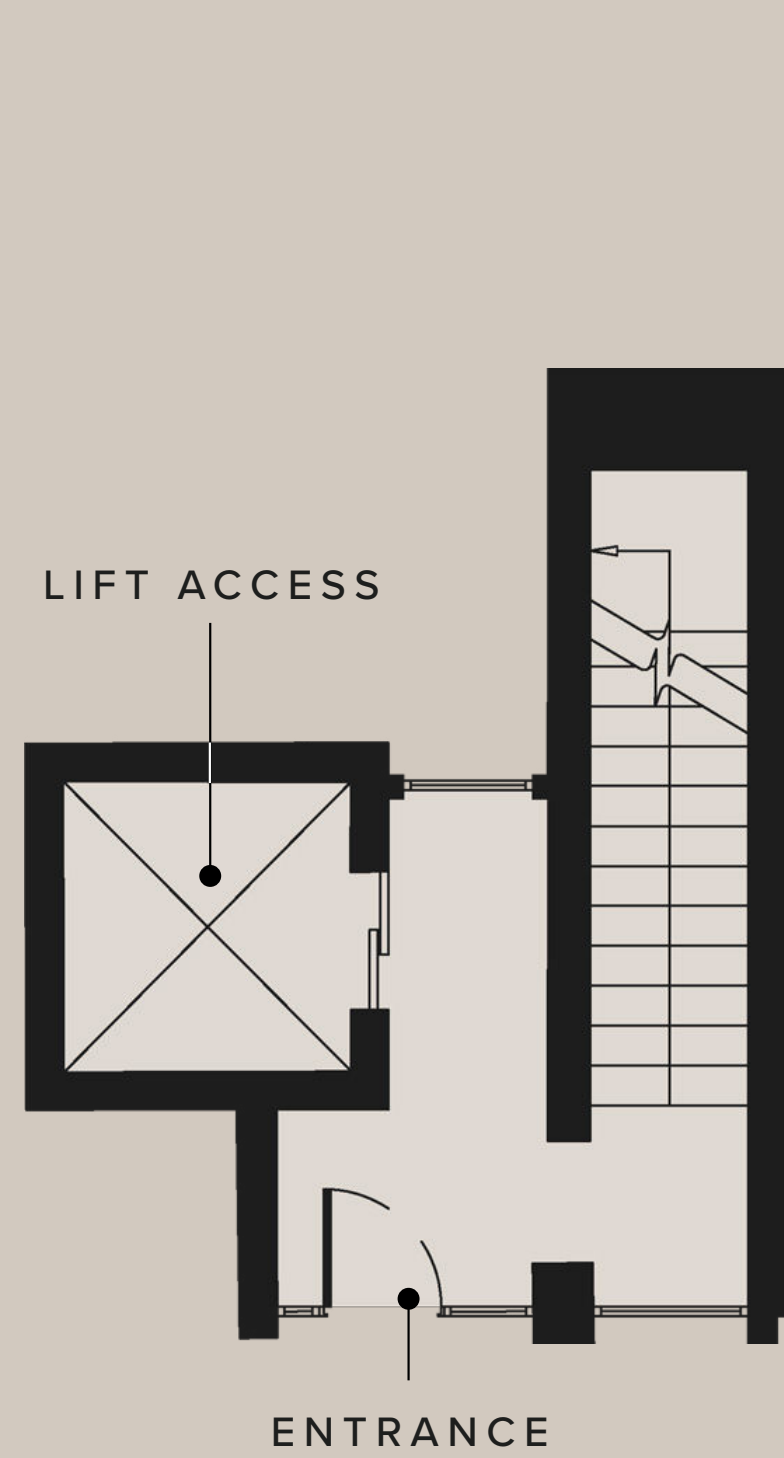


## WHAT'S INCLUDED?

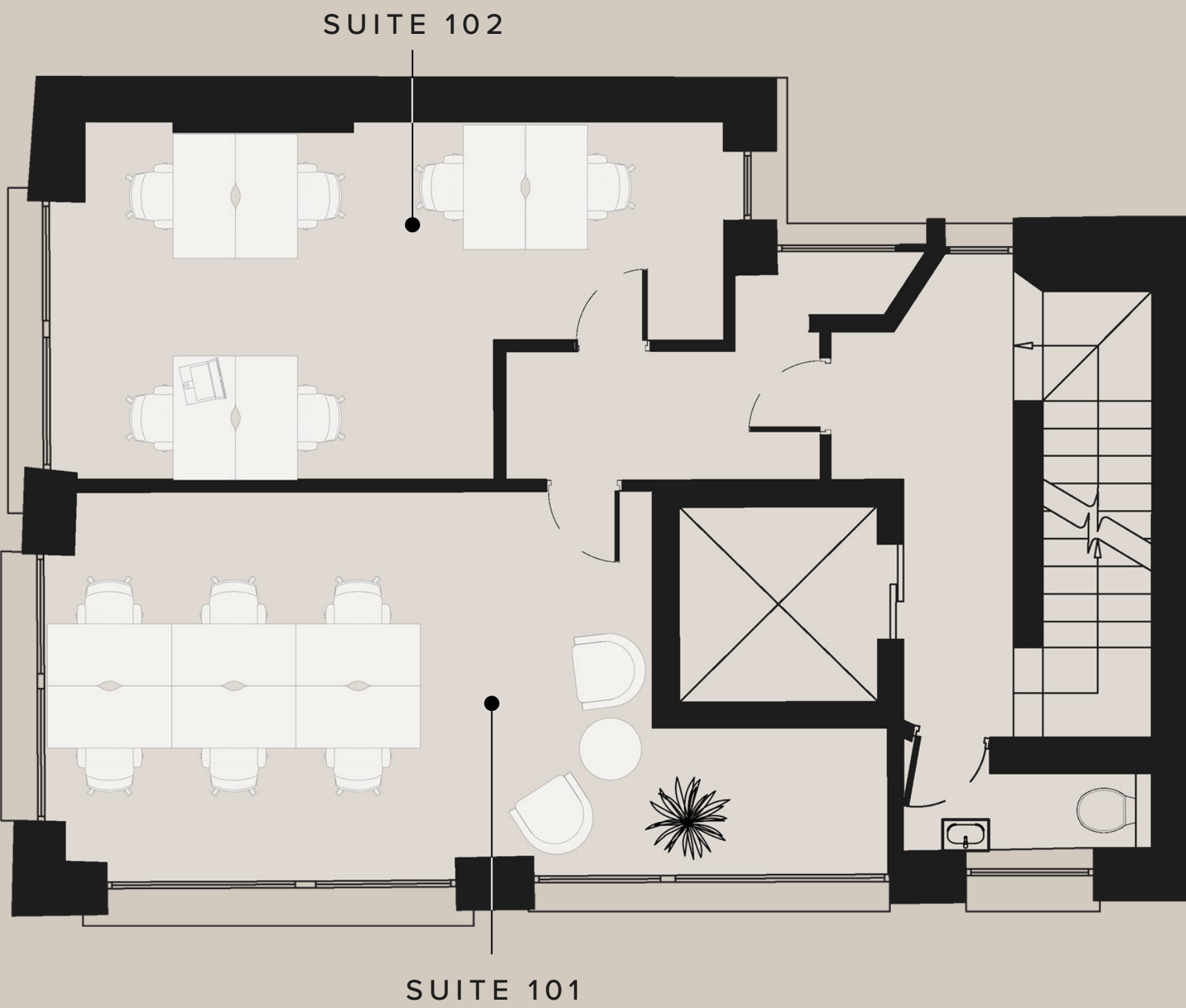
- ☐ All Inclusive & Flexible Contracts
- ☐ Building Rates & All Utilities
- ☐ In-House Maintenance & IT Support
- ☐ Daily Cleaning
- ☐ Communal Meeting Room
- ☐ Communal Kitchen
- ☐ Lift Access



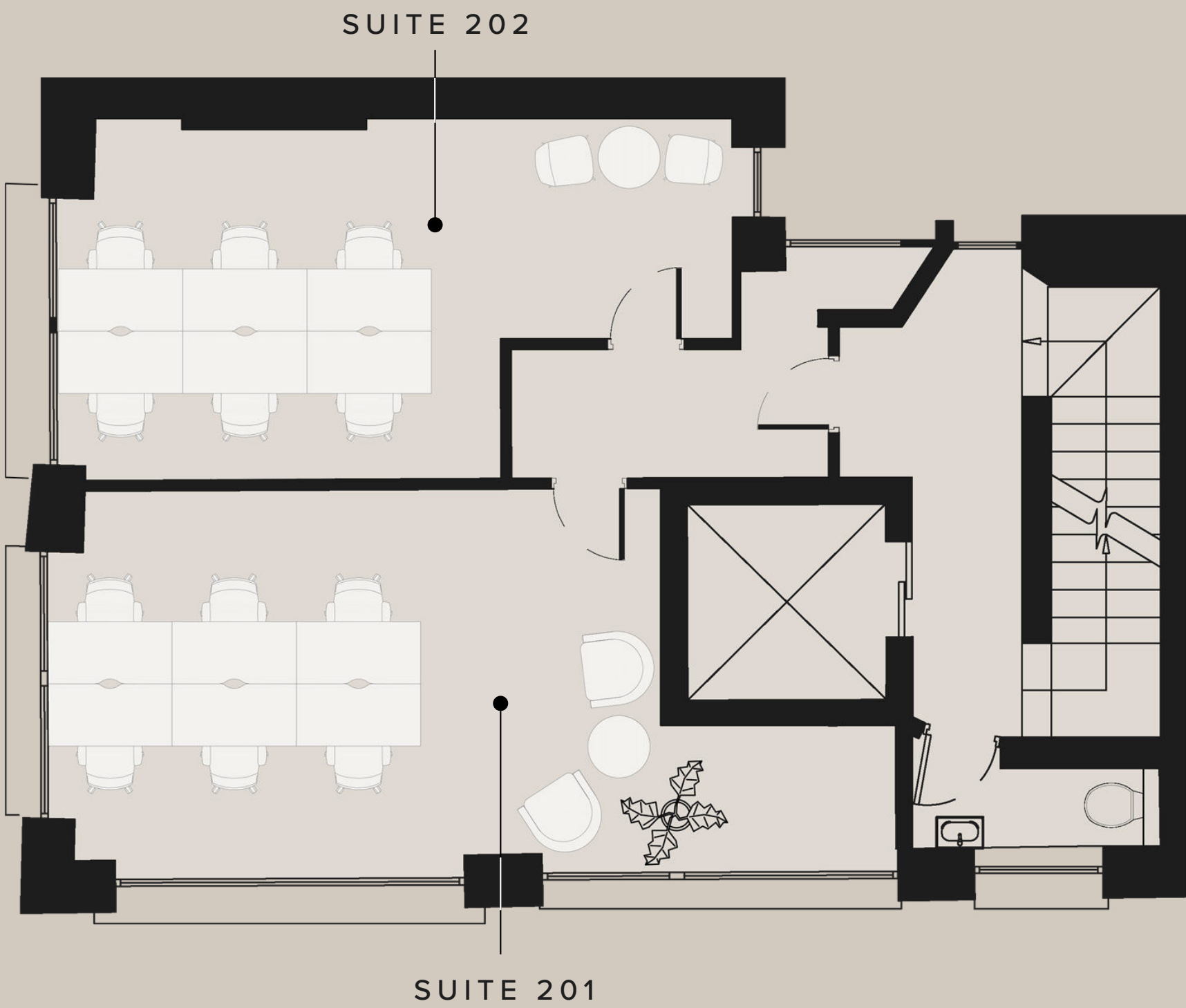




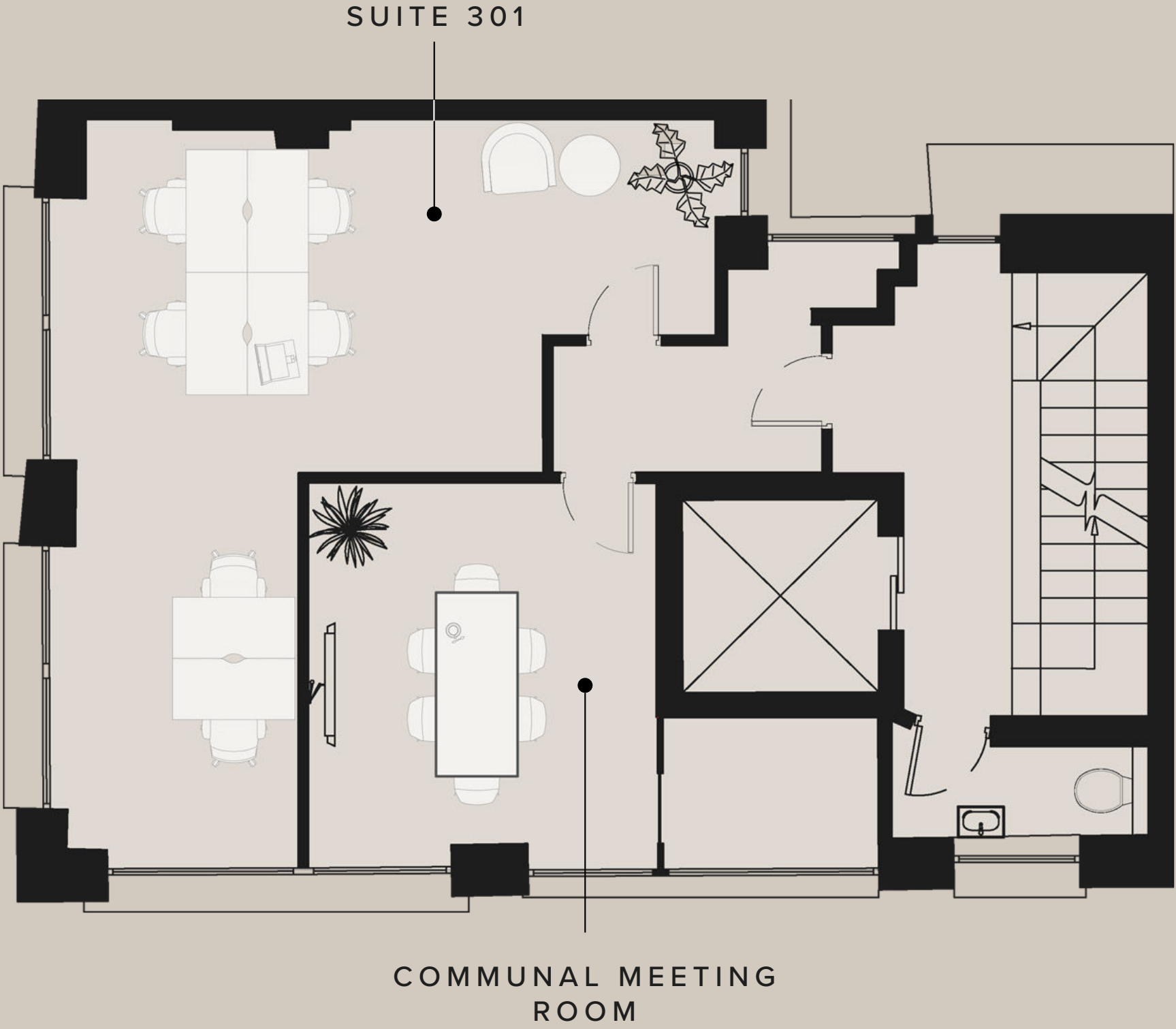
GROUND FLOOR



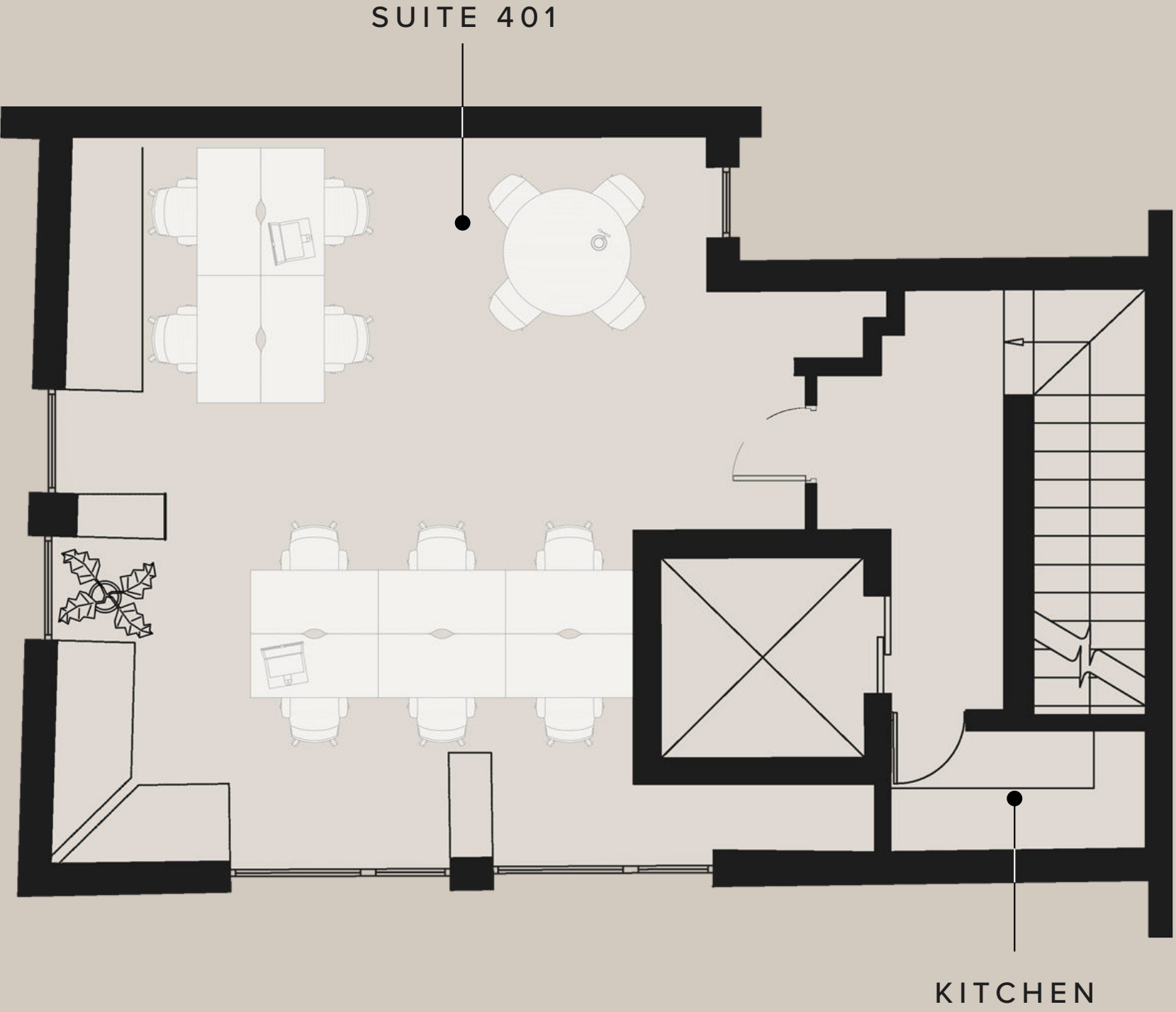
FIRST FLOOR



SECOND FLOOR



THIRD FLOOR



FOURTH FLOOR



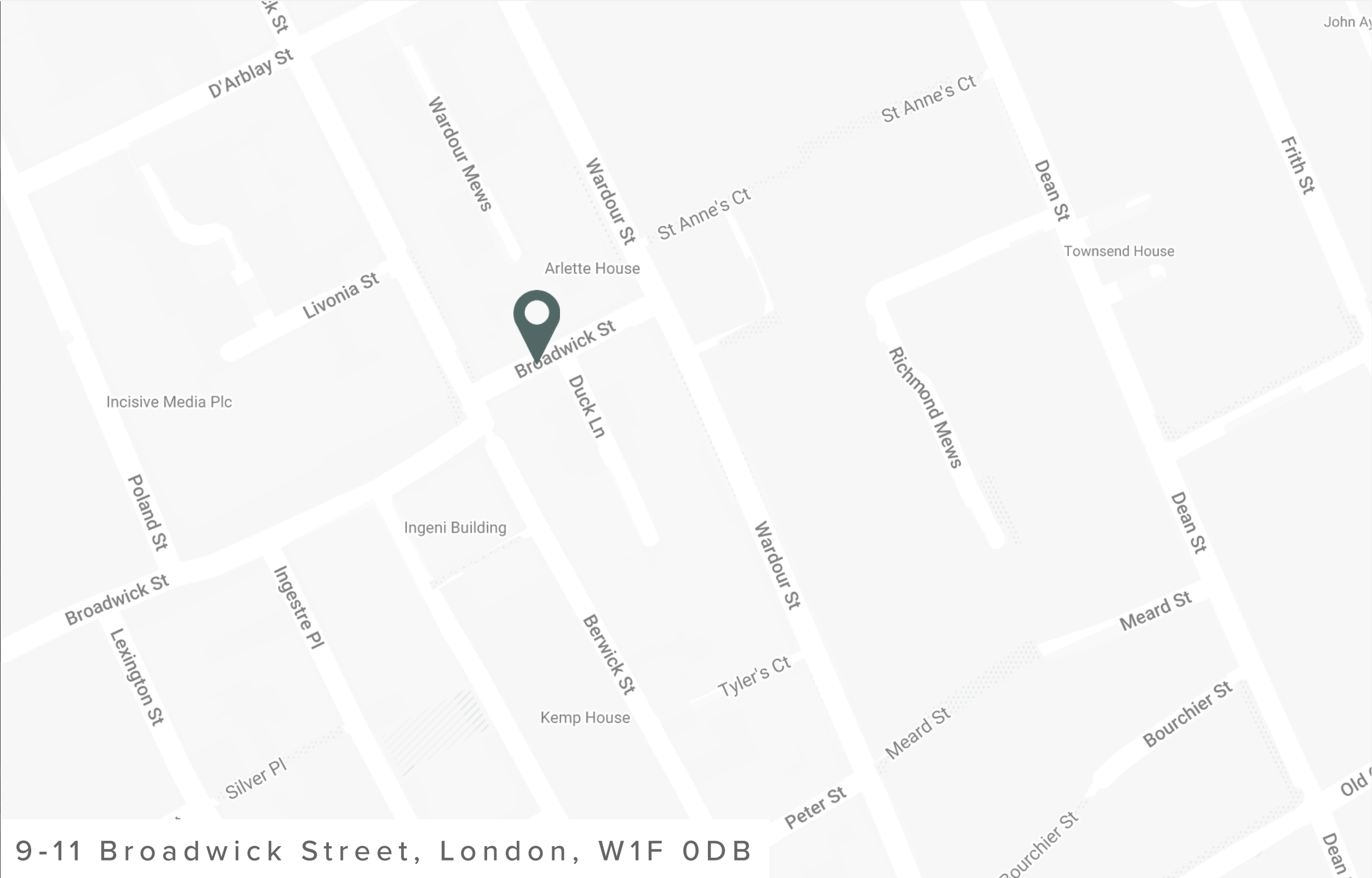
# BOOK YOUR TOUR TODAY

Our team is dedicated to helping you explore our London buildings filled with unique spaces, personality and character.

Alternatively, you can view our building through a virtual tour below.

BOOK VIEWING

VIRTUAL TOUR



9-11 Broadwick Street, London, W1F 0DB



## DESIGN TAILORED TO YOU

At WorkPad we understand that when considering reorganisation of your existing offices, or undertaking a new office refurbishment, selecting the correct furniture is vital to delivering an office environment that works for you.

We aspire to make this process simple; with an array of designs grown out of years of experience and close cooperation with our clients, you can select individual or packaged designs, or speak to our stylist for a larger array.

EXPLORE BESPOKE



3D Visualisation produced by our in-house Design Team





Book a viewing today:

020 7788 7507  
enquiries@workpad.co.uk  
www.workpad.co.uk

16 Stanhope Place  
London  
W2 2HH

