

[]
WORKPAD

6 DORSET STREET
MARYLEBONE

**EVERY
GREAT IDEA
DESERVES
SUCCESS**






6 DORSET STREET

Located in the heart of Marylebone, and moments away from the famous Marylebone High Street.

6 Dorset Street provides an enviable business address. With a bespoke meeting room and an outdoor breakout area, 6 Dorset Street offers a variety of contemporary private office suites.

 BAKER STREET
Walking - 6 mins

 MARYLEBONE
Walking - 8 mins

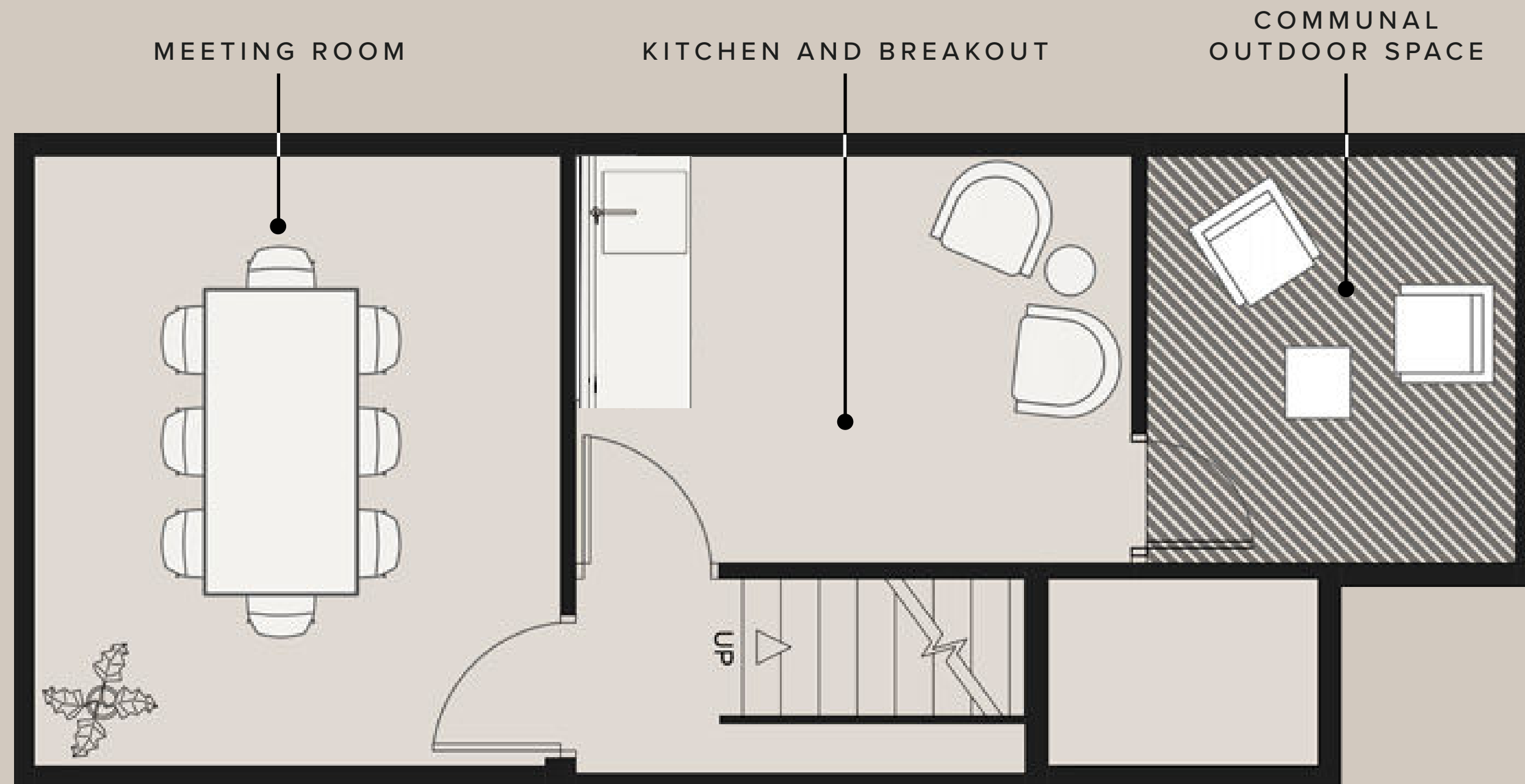
 BOND STREET
Walking - 8 mins



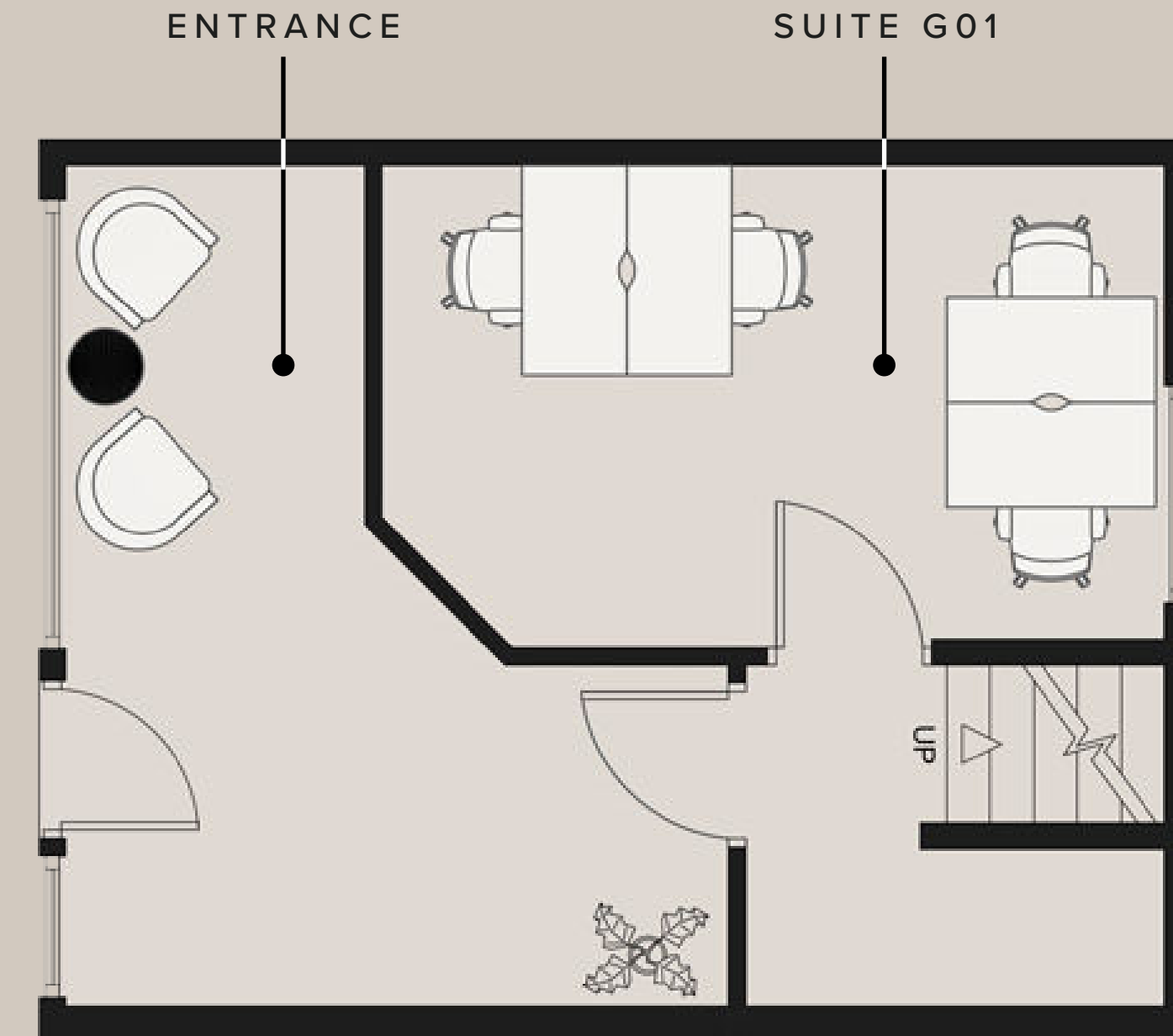
WHAT'S INCLUDED?

- All Inclusive & Flexible Contracts
- Building Rates & All Utilities
- In-House Maintenance & IT Support
- Daily Cleaning
- Communal Meeting Room
- Communal Kitchen
- Building Lift

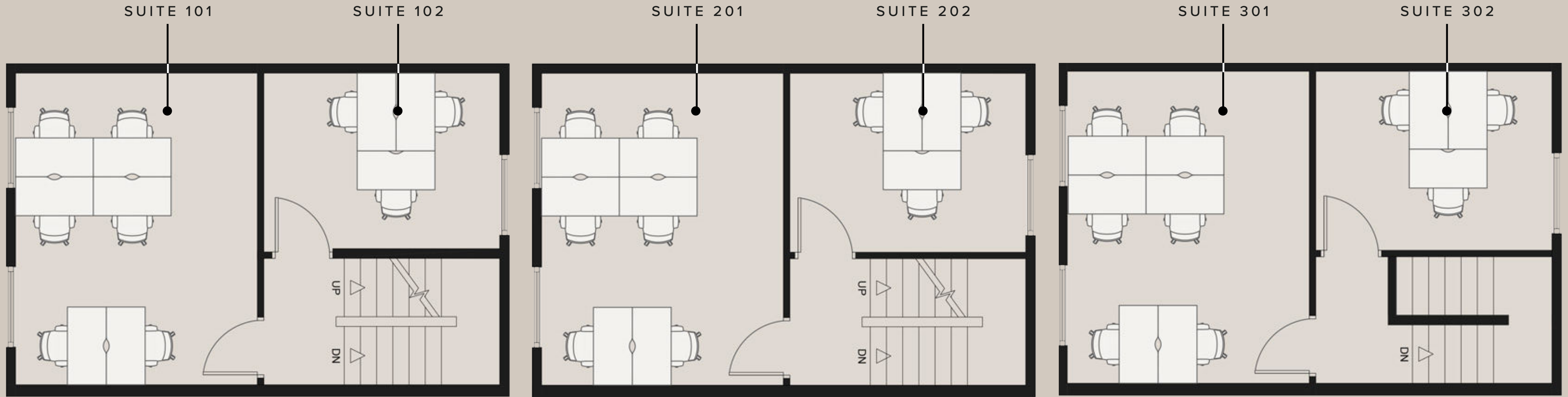




LOWER GROUND FLOOR



GROUND FLOOR



FIRST FLOOR

SECOND FLOOR

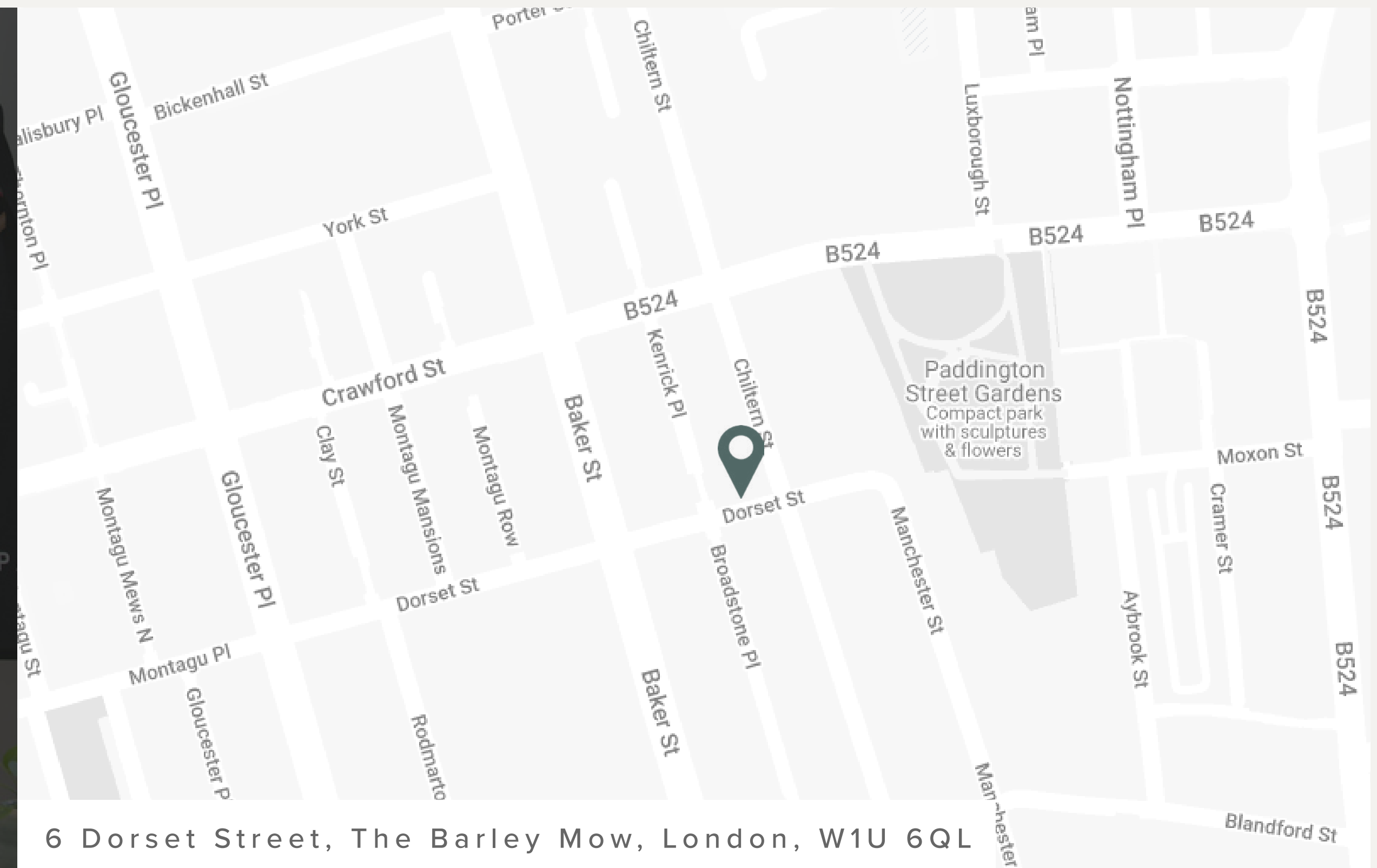
THIRD FLOOR



BOOK YOUR TOUR TODAY

Our team is dedicated to helping you explore our London buildings filled with unique spaces, personality and character.

BOOK VIEWING



6 Dorset Street, The Barley Mow, London, W1U 6QL



DESIGN TAILORED TO YOU

At WorkPad we understand that when considering reorganisation of your existing offices, or undertaking a new office refurbishment, selecting the correct furniture is vital to delivering an office environment that works for you.

We aspire to make this process simple; with an array of designs grown out of years of experience and close cooperation with our clients, you can select individual or packaged designs, or speak to our stylist for a larger array.

[EXPLORE BESPOKE](#)



3D Visualisation produced by our in-house Design Team



Book a viewing today:

020 7788 7507
enquiries@workpad.co.uk
www.workpad.co.uk

16 Stanhope Place
London
W2 2HH

