



WORKPAD

5 MARGARET STREET
FITZROVIA

BOOK A VIEWING



TAKE A VIRTUAL TOUR

SEND US A WHATSAPP | CONTACT FORM



5 MARGARET STREET

Neatly tucked away in Fitzrovia, 5 Margaret Street is surrounded by fashion boutiques, design studios, and eateries. Spread over five floors this period building with an abundance of natural light combines minimalism and luxury design.

 OXFORD CIRCUS
Walking - 5 mins

 GOODGE STREET
Walking - 6 mins

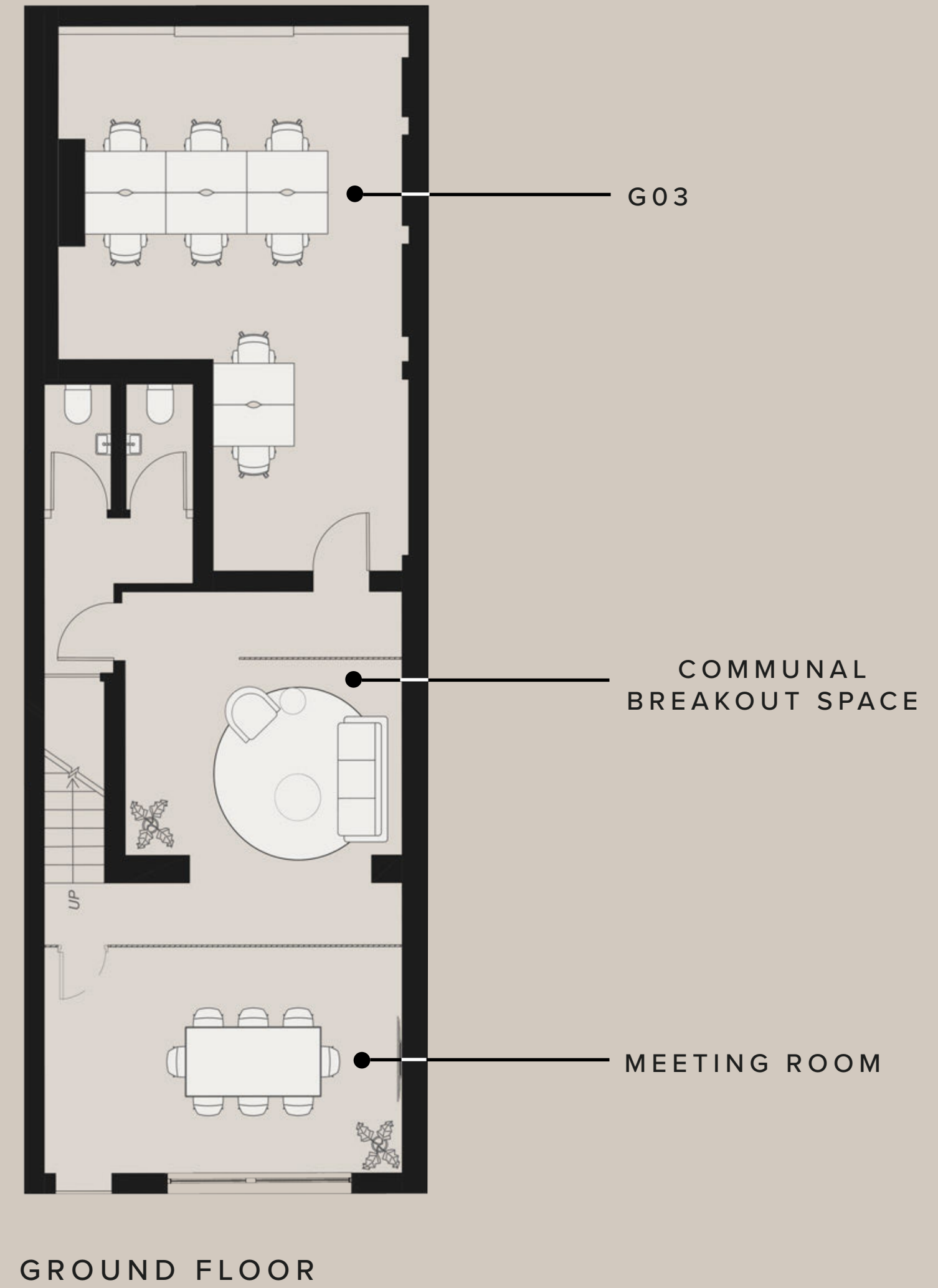
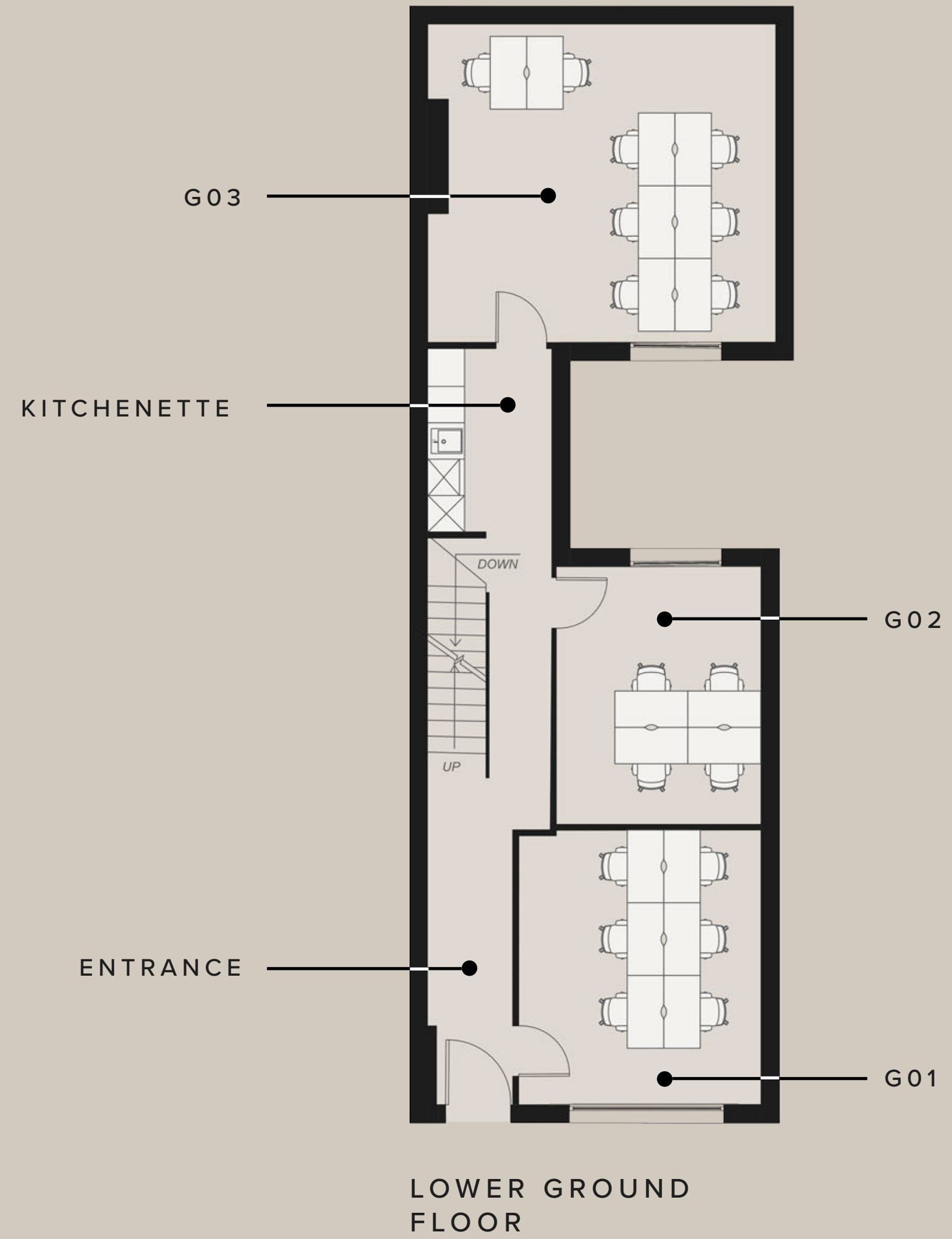
 TOTTENHAM COURT ROAD
Walking - 8 mins



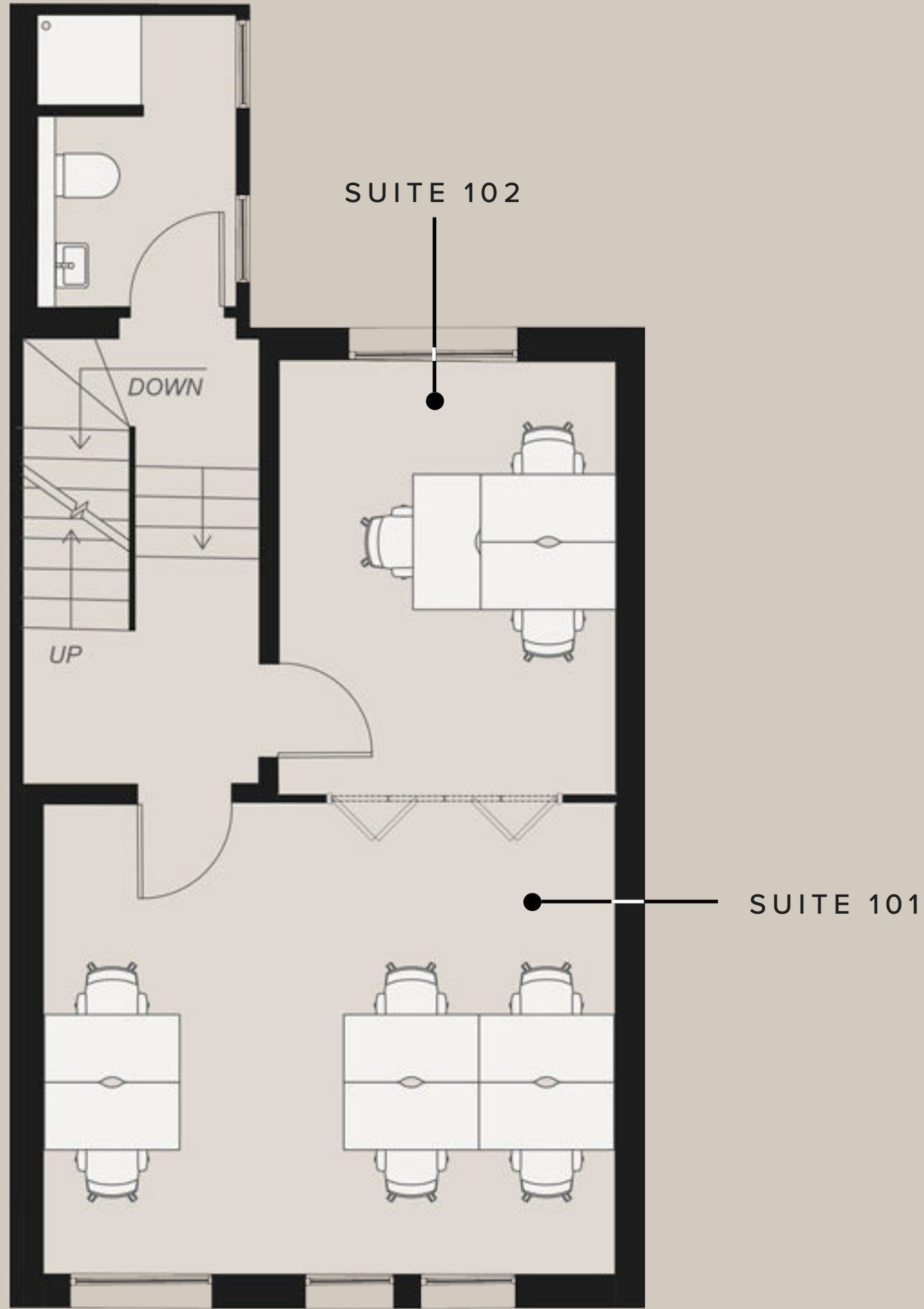
WHAT'S INCLUDED?

- All Inclusive & Flexible Contracts
- Building Rates & All Utilities
- In-House Maintenance & IT Support
- Daily Cleaning
- Shower Facilities

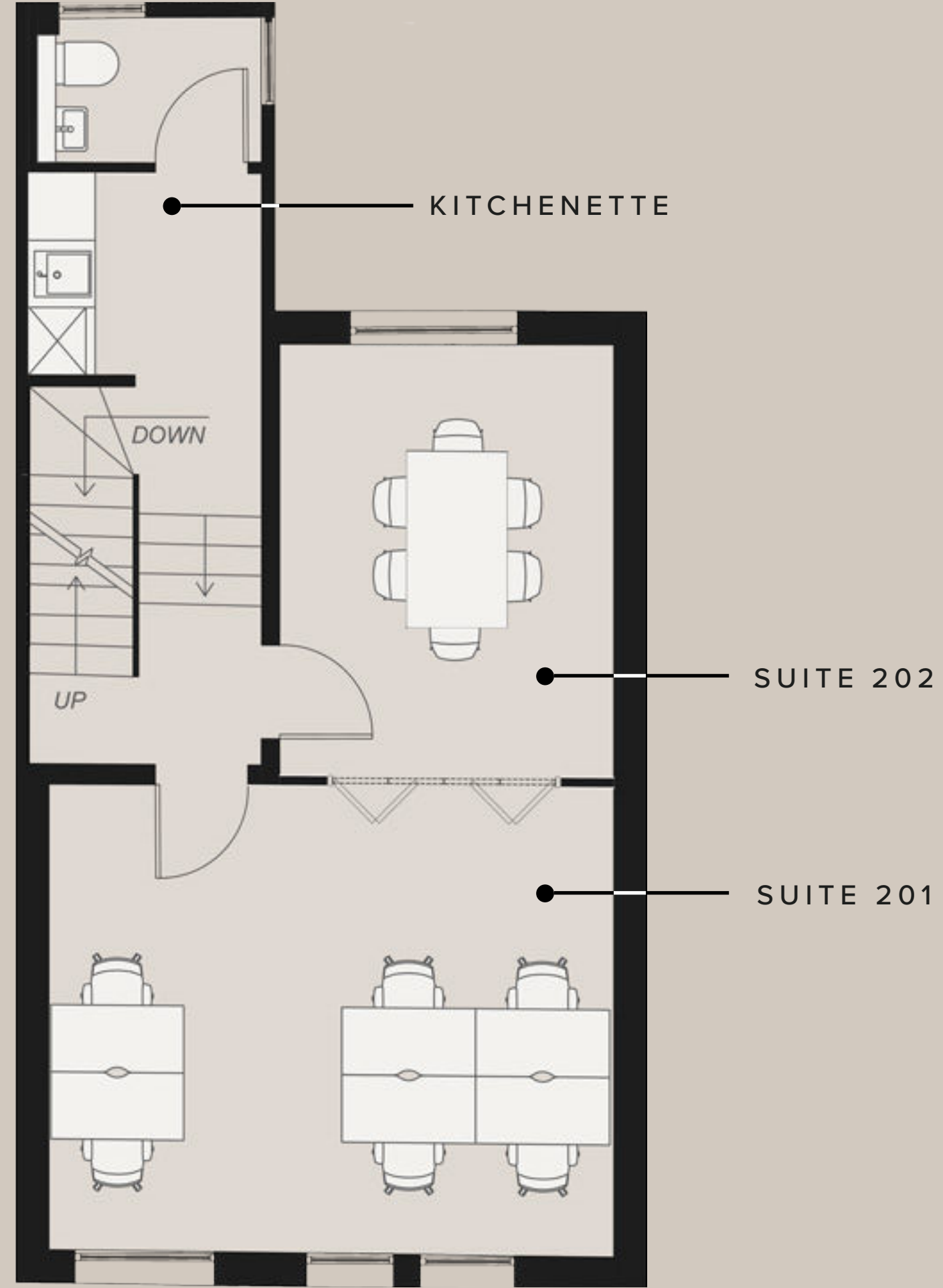




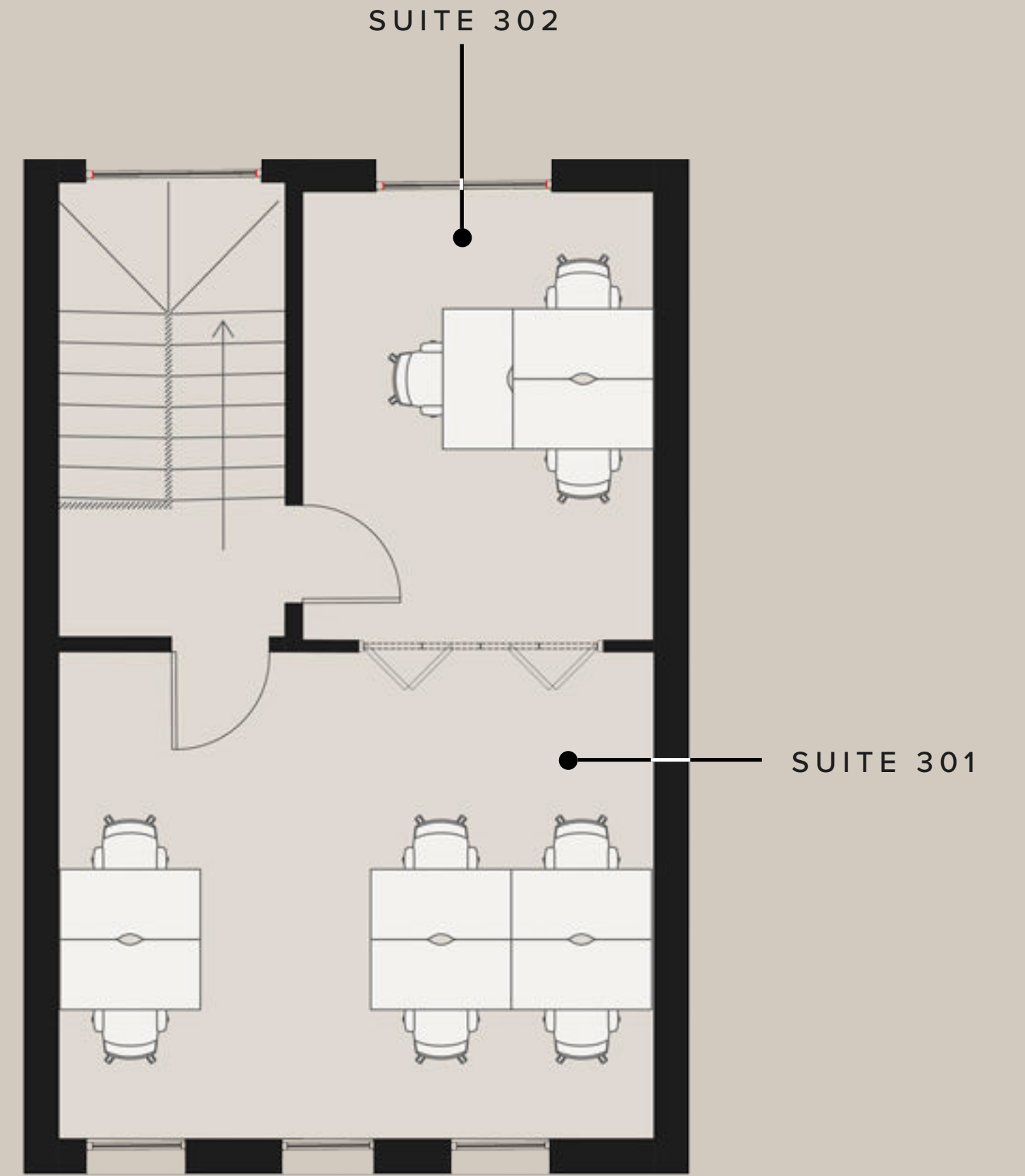
FLOORPLANS



FIRST FLOOR



SECOND FLOOR



THIRD FLOOR



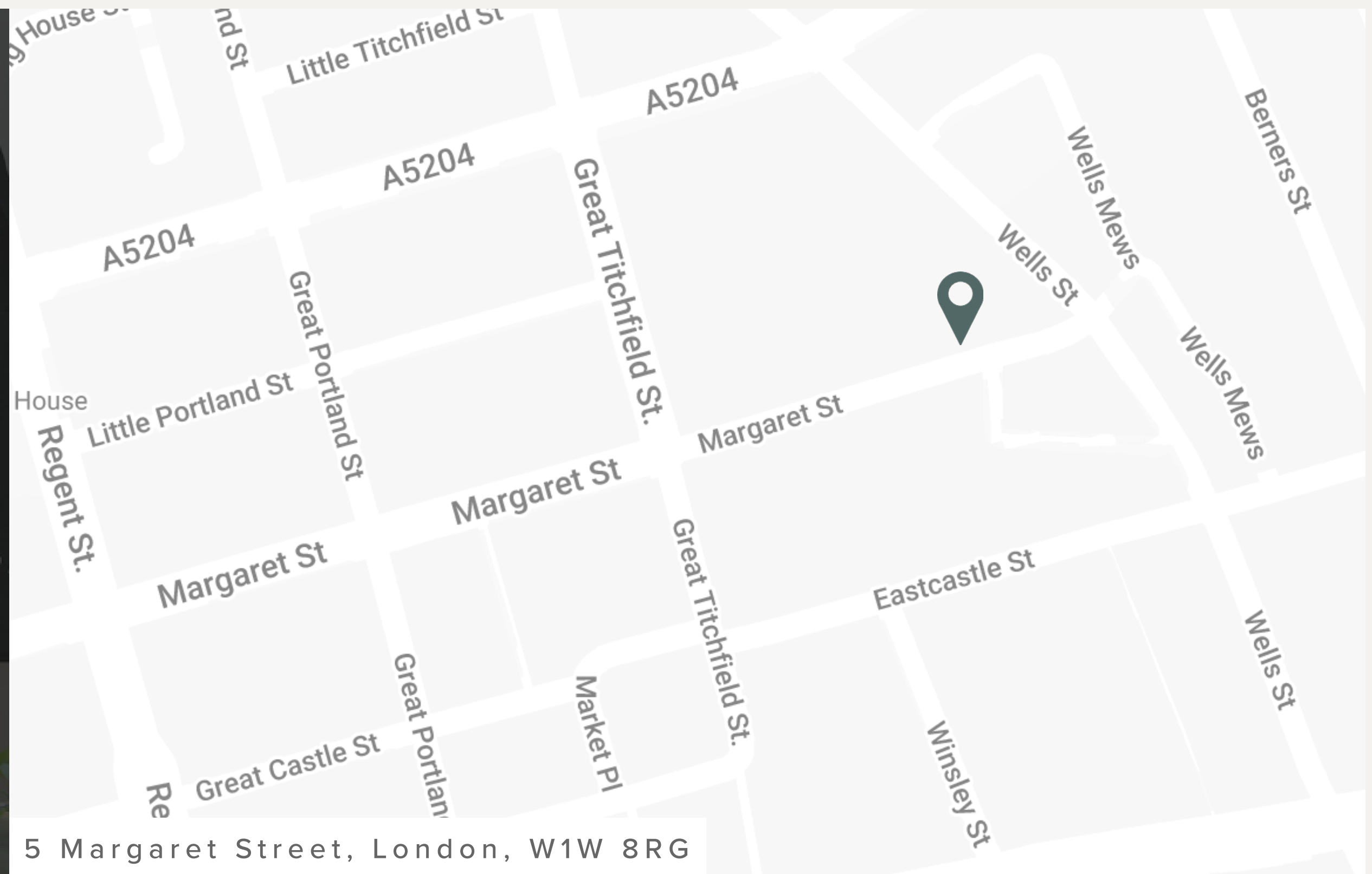
BOOK YOUR TOUR TODAY

Our team is dedicated to helping you explore our London buildings filled with unique spaces, personality and character.

Alternatively, you can view our building through a virtual tour below.

[BOOK VIEWING](#)

[VIRTUAL TOUR](#)





DESIGN TAILORED TO YOU

At WorkPad we understand that when considering reorganisation of your existing offices, or undertaking a new office refurbishment, selecting the correct furniture is vital to delivering an office environment that works for you.

We aspire to make this process simple; with an array of designs grown out of years of experience and close cooperation with our clients, you can select individual or packaged designs, or speak to our stylist for a larger array.

[EXPLORE BESPOKE](#)



3D Visualisation produced by our in-house Design Team



Book a viewing today:

020 7788 7507
enquiries@workpad.co.uk
www.workpad.co.uk

16 Stanhope Place
London
W2 2HH

