



WORKPAD


38-39 ST JOHN'S LANE
FARRINGTON



38-39 ST JOHN'S LANE

Located in the heart of Farringdon and moments away from the famous Smithfield Market, 38-39 St John's Lane provides an enviable business address.

With a bespoke meeting room and an abundance of original features, 38-39 St John's Lane offers a variety of contemporary private office suites.

 FARRINGDON
Walking - 3 mins

 BARBICAN
Walking - 6 mins

 CHANCERY LANE
Walking - 11 mins

BOOK A VIEWING

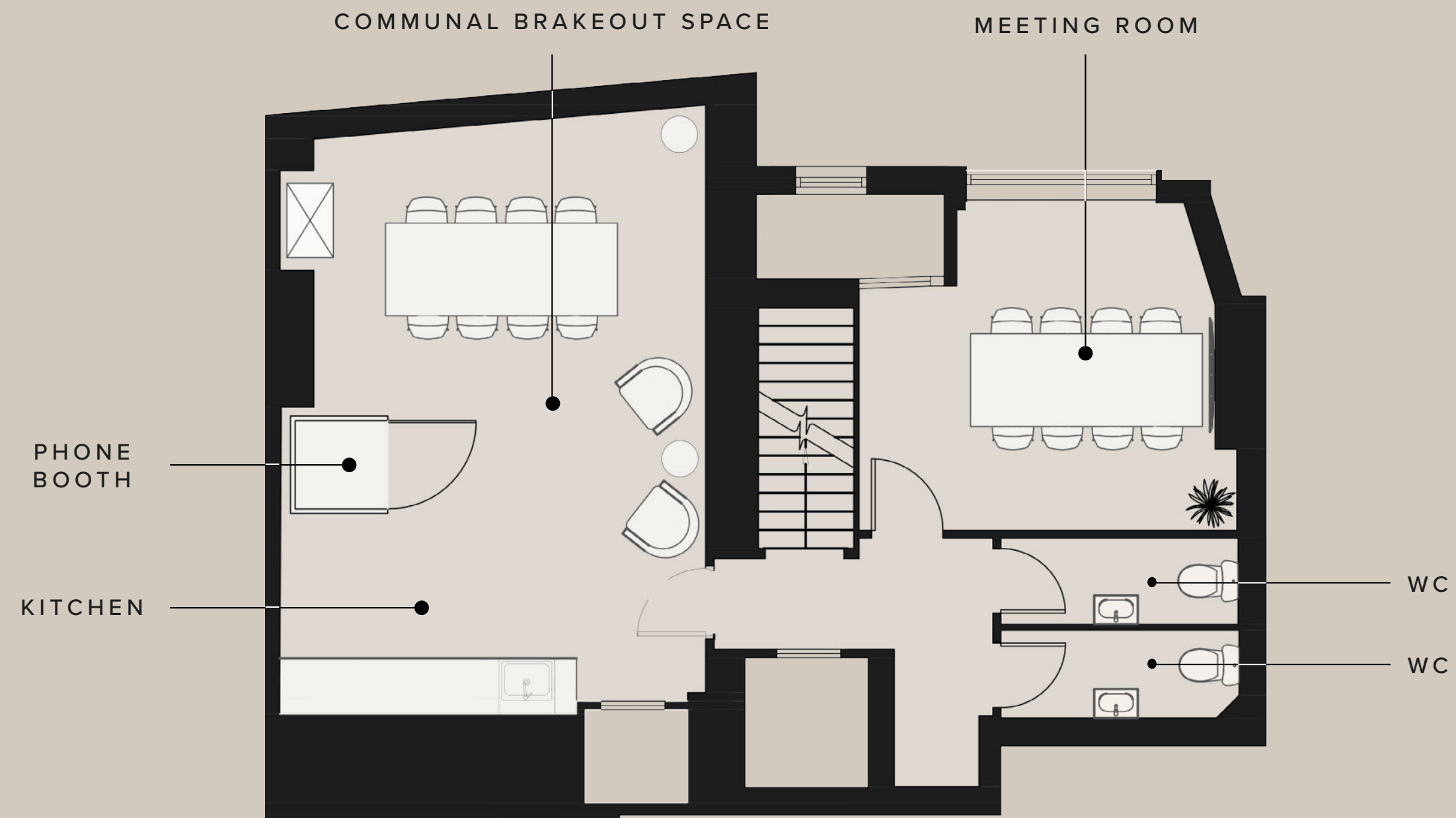




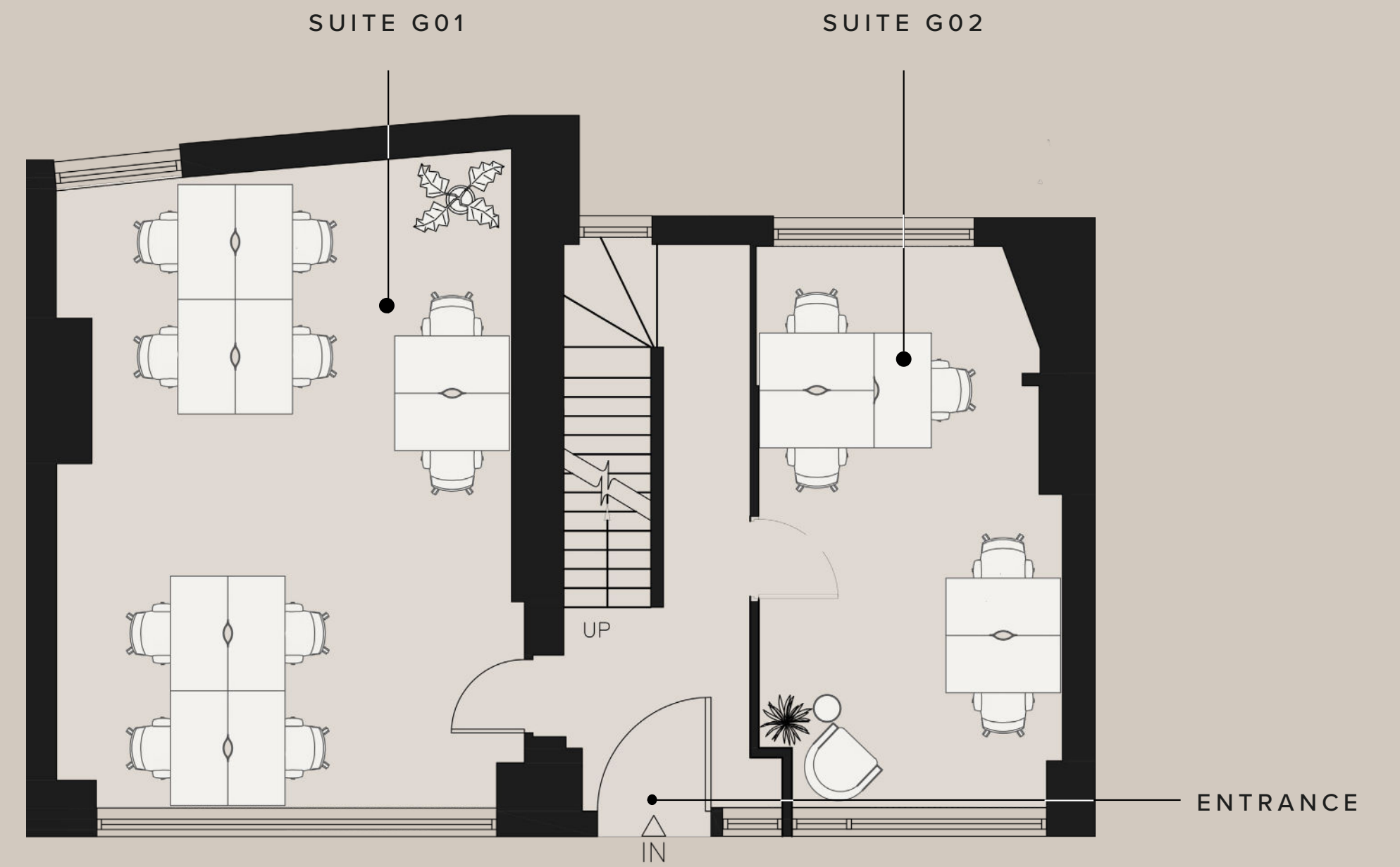
WHAT'S INCLUDED?

- All Inclusive & Flexible Contracts
- Building Rates & All Utilities
- In-House Maintenance & IT Support
- Super-Fast Fibre Internet
- Communal Kitchen
- Communal Breakout Area
- Daily Cleaning
- Communal Meeting Room



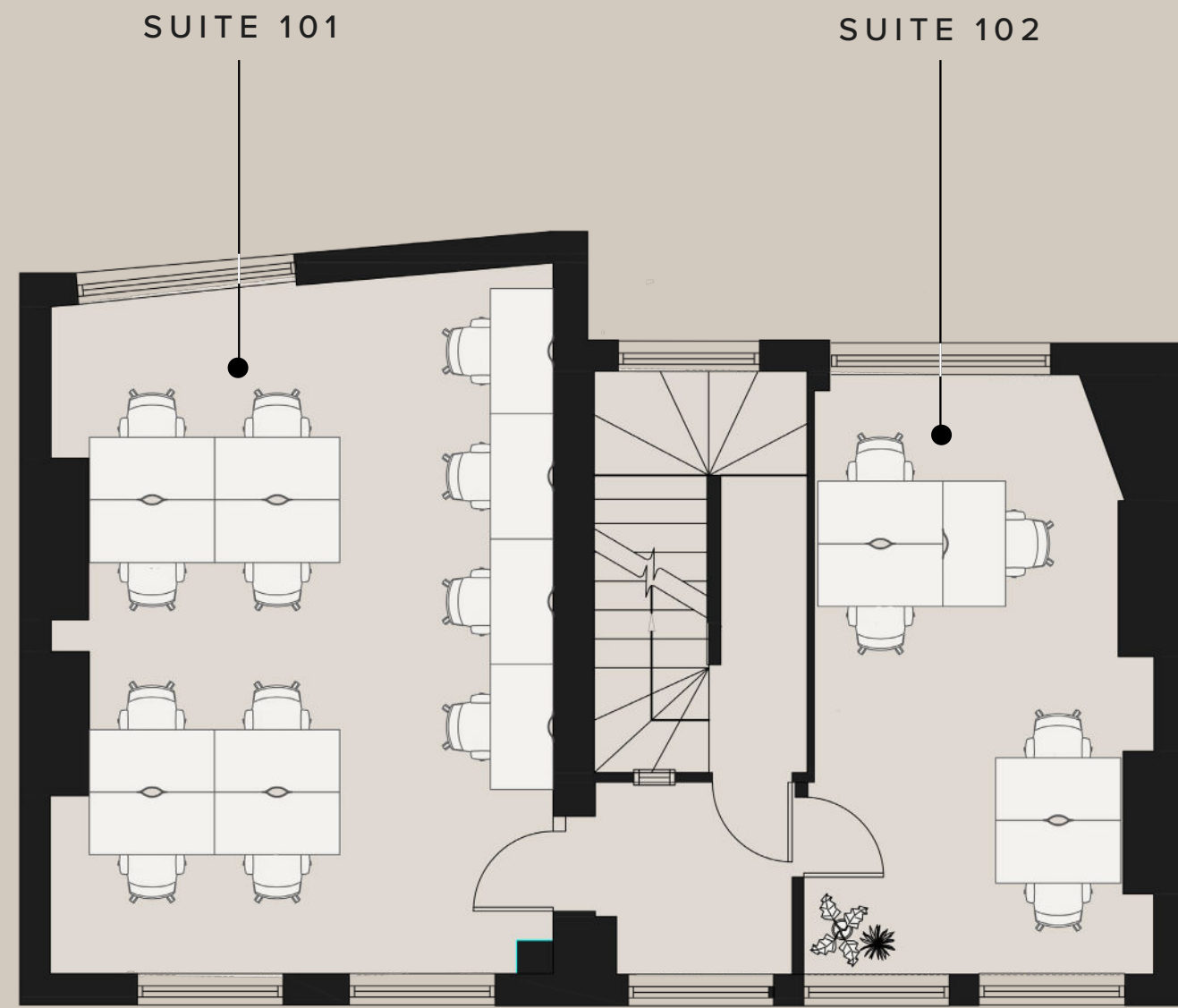


LOWER GROUND FLOOR

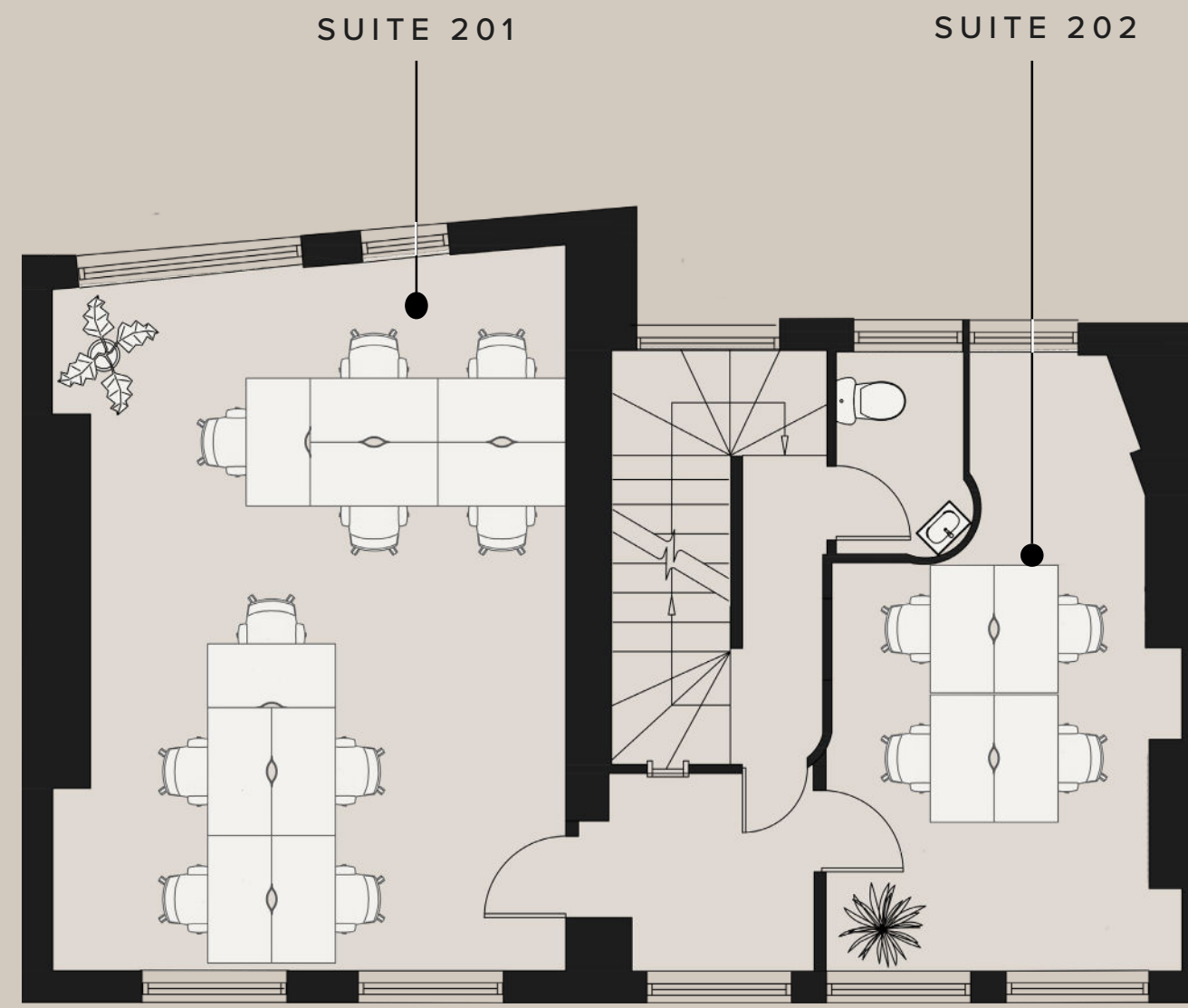


GROUND FLOOR

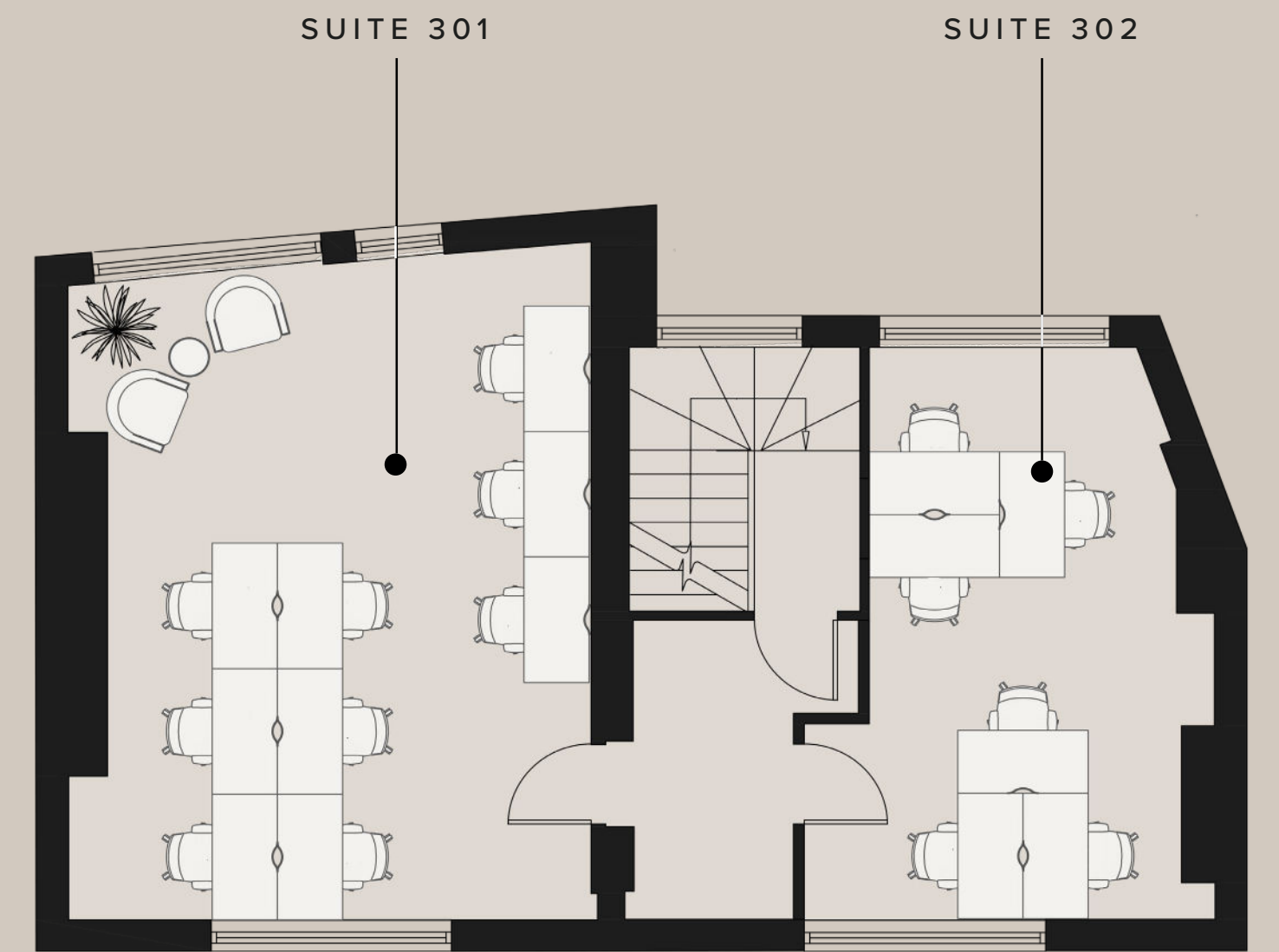
FLOORPLANS



FIRST FLOOR



SECOND FLOOR



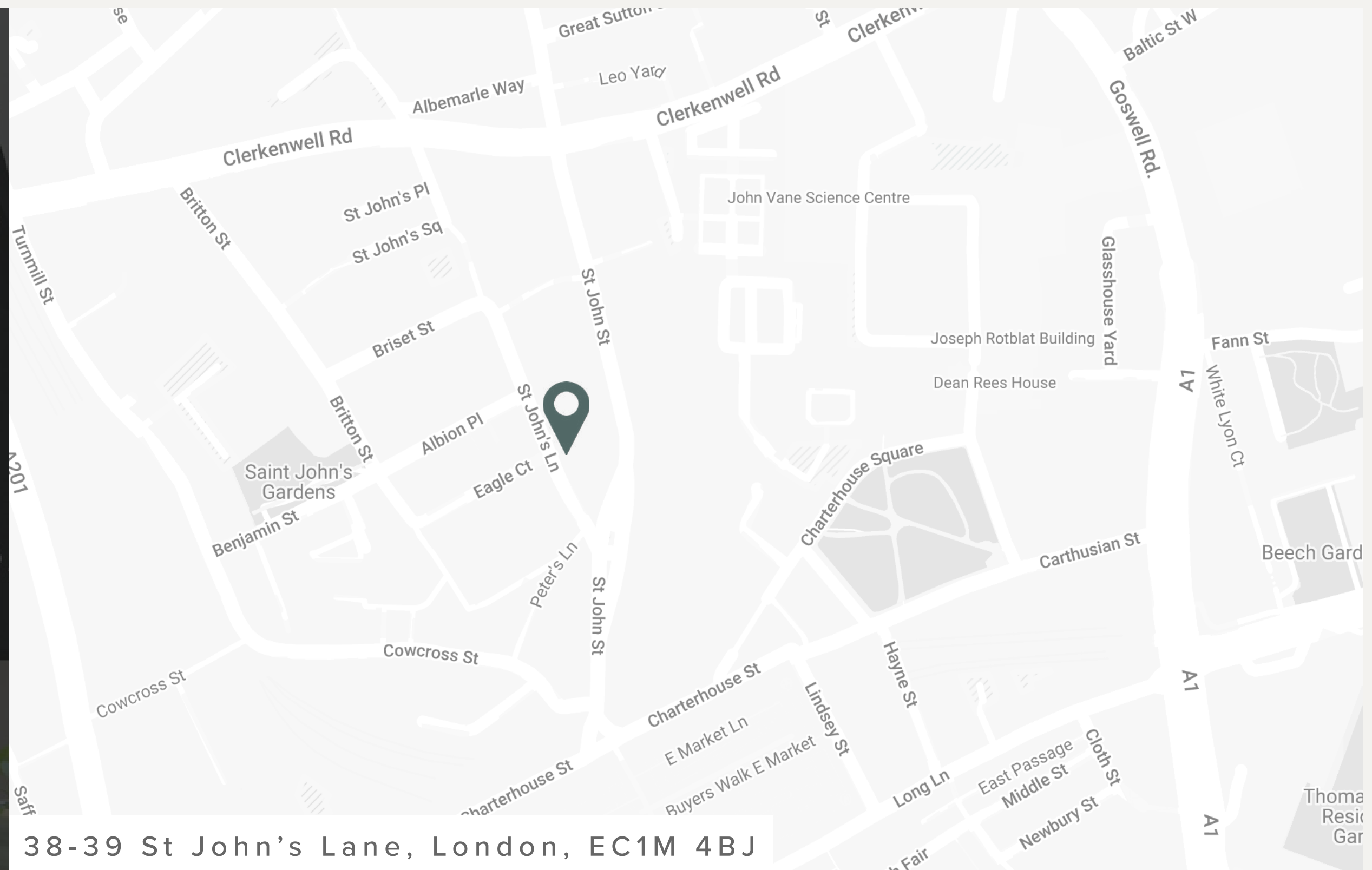
THIRD FLOOR



BOOK YOUR TOUR TODAY

Our team is dedicated to helping you explore our London buildings filled with unique spaces, personality and character.

BOOK VIEWING





DESIGN TAILORED TO YOU

At WorkPad we understand that when considering reorganisation of your existing offices, or undertaking a new office refurbishment, selecting the correct furniture is vital to delivering an office environment that works for you.

We aspire to make this process simple; with an array of designs grown out of years of experience and close cooperation with our clients, you can select individual or packaged designs, or speak to our stylist for a larger array.

[EXPLORE BESPOKE](#)



3D Visualisation produced by our in-house Design Team



Book a viewing today:

020 7788 7507
enquiries@workpad.co.uk
www.workpad.co.uk

16 Stanhope Place
London
W2 2HH

