



[]

WORKPAD

175 WARDOUR STREET
SOHO

MODERN DESIGN-LED
MANAGED OFFICE
COMING SOON
Flexible Terms



BOOK A VIEWING





175 WARDOUR STREET

This period building, located on the famous Wardour Street, is moments away from the most popular eateries, shops and entertainment Soho has to offer. The building has been extensively restored, benefiting from an abundance of natural light and original period features.

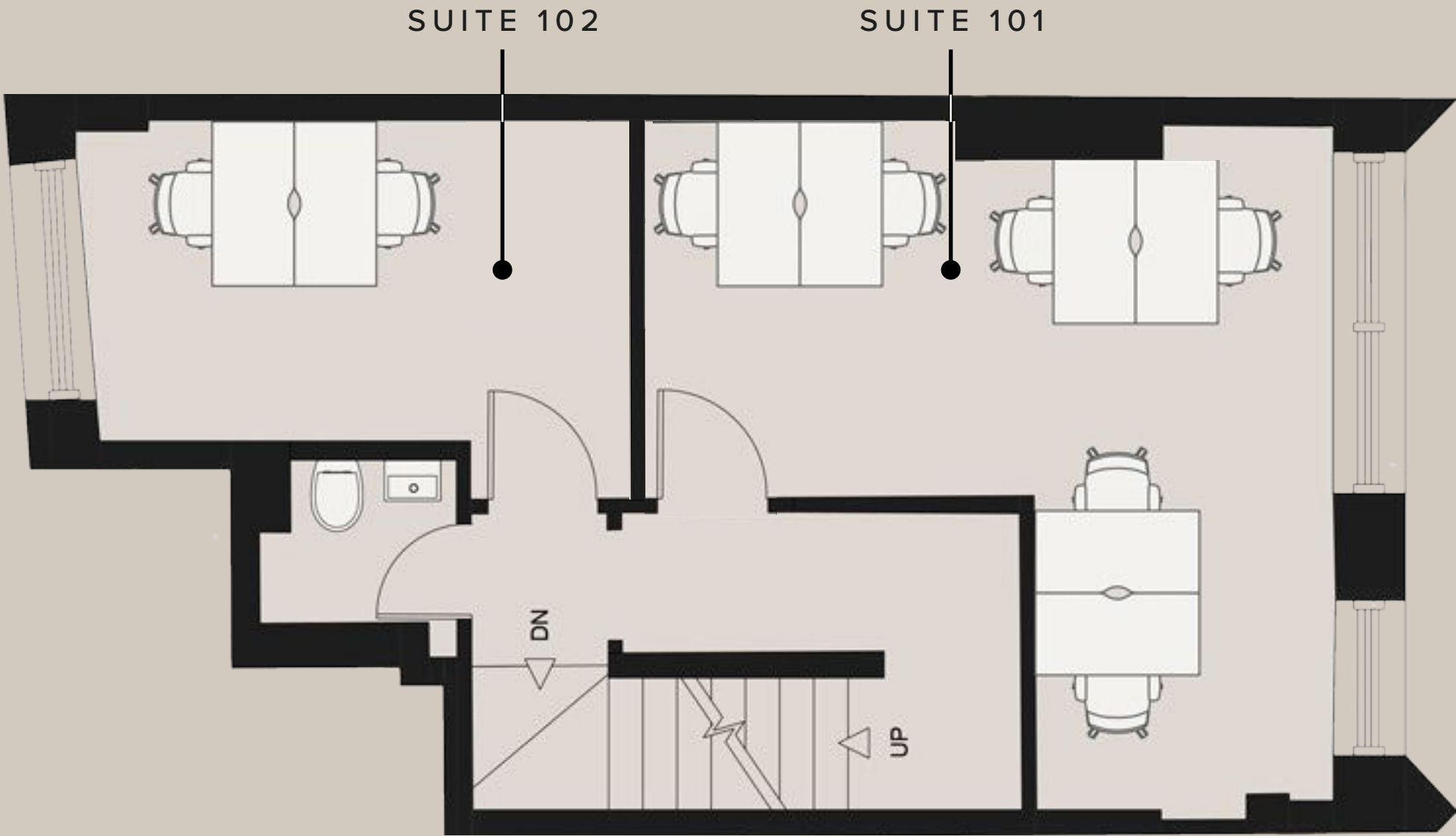
-  **TOTTENHAM COURT ROAD**
Walking - 6 mins
-  **OXFORD CIRCUS**
Walking - 7 mins
-  **PICCADILLY CIRCUS**
Walking - 9 mins



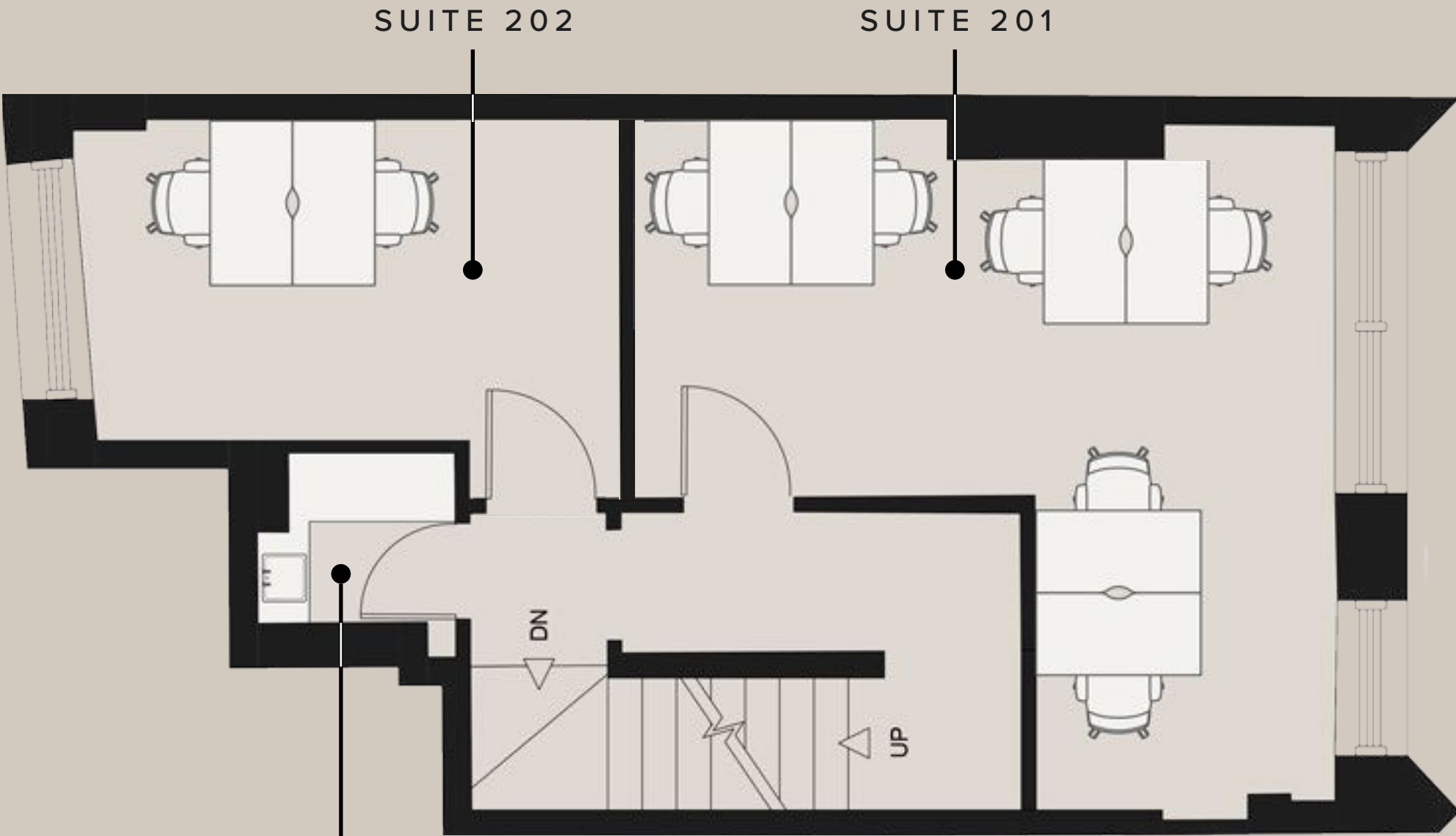
WHAT’S INCLUDED?

- [] All Inclusive & Flexible Contacts
- [] Building Rates & All Utilities
- [] Kitchenette
- [] In-House Maintenance & IT Support
- [] Daily Cleaning
- [] Meeting room

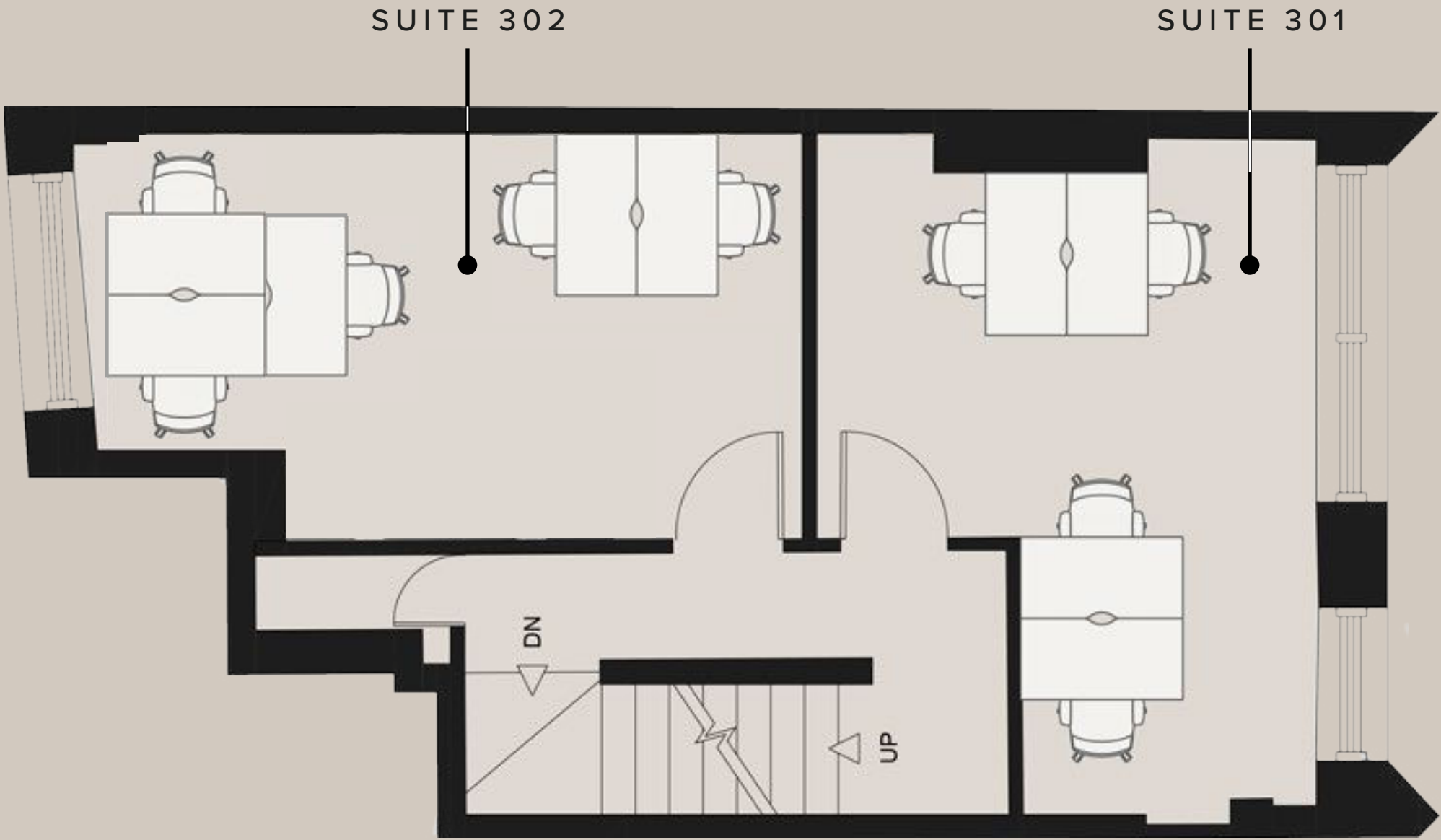




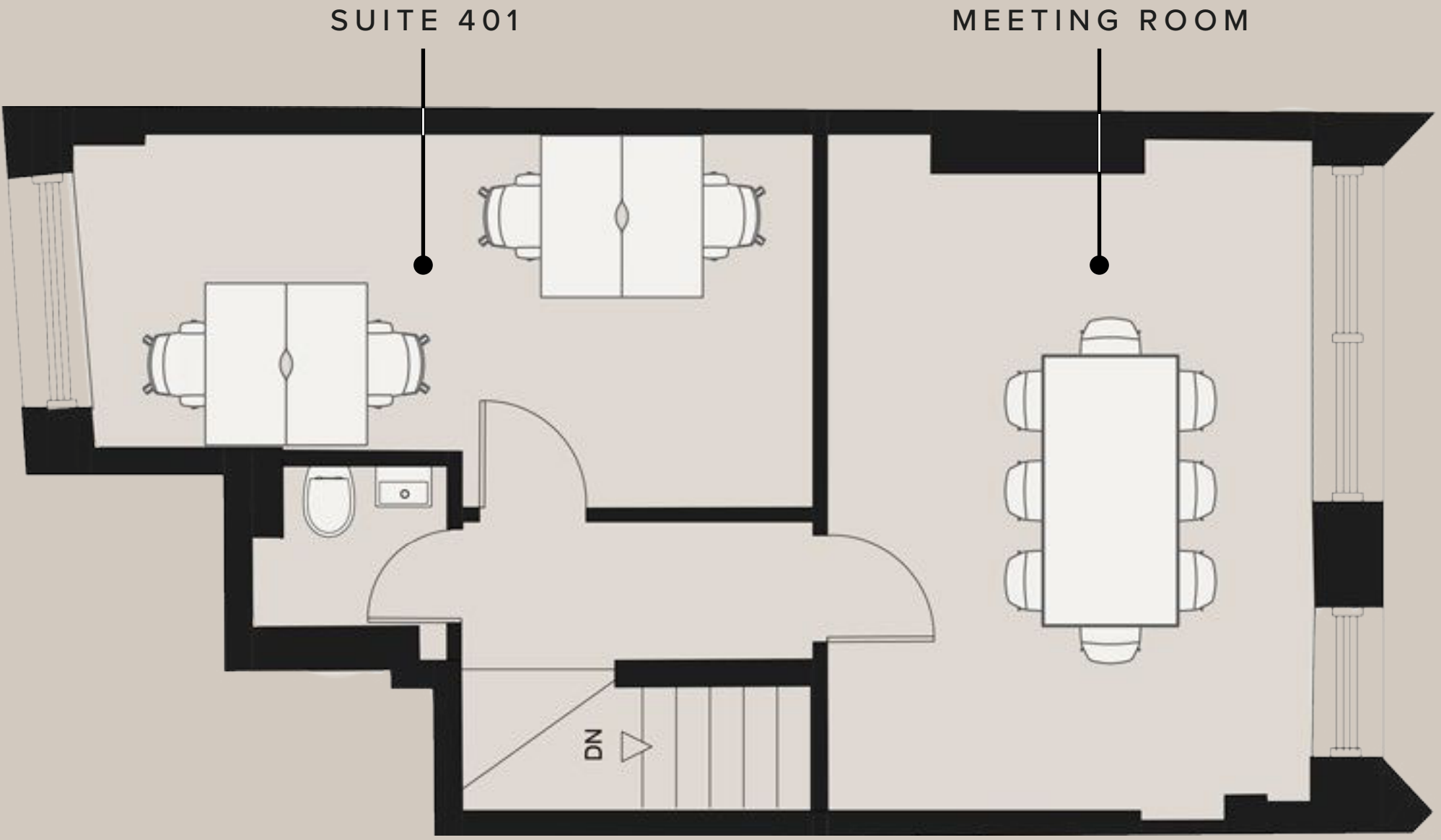
FIRST FLOOR



SECOND FLOOR



THIRD FLOOR



FOURTH FLOOR



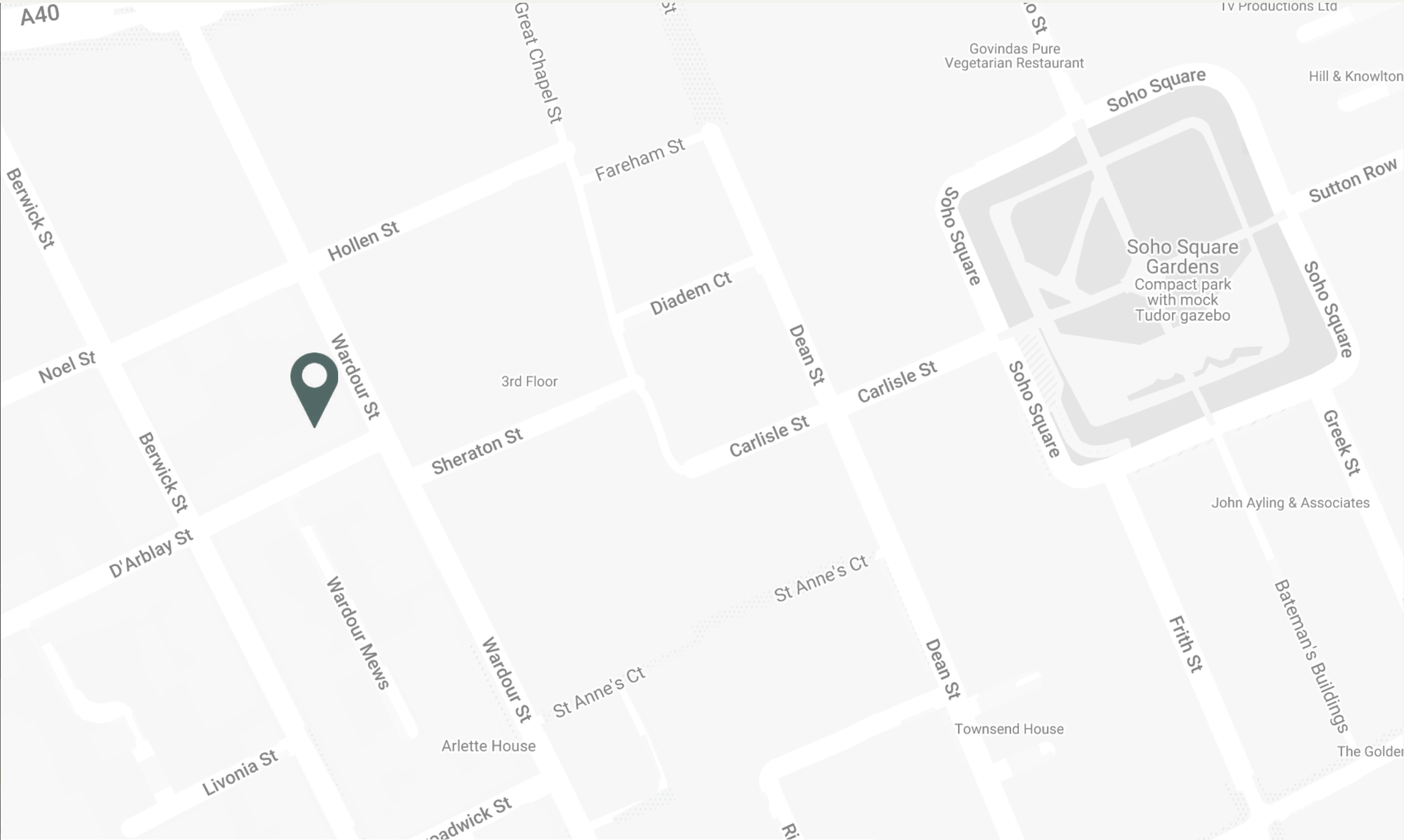
BOOK YOUR TOUR TODAY

Our team is dedicated to helping you explore our London buildings filled with unique spaces, personality and character.

Alternatively, you can view our building through a virtual tour below.

BOOK VIEWING

VIRTUAL TOUR



175 Wardour Street, Soho London, W1F 8WU

DESIGN TAILORED TO YOU

At WorkPad we understand that when considering reorganisation of your existing offices, or undertaking a new office refurbishment, selecting the correct furniture is vital to delivering an office environment that works for you.

We aspire to make this process simple; with an array of designs grown out of years of experience and close cooperation with our clients, you can select individual or packaged designs, or speak to our stylist for a larger array.

EXPLORE BESPOKE



3D Visualisation produced by our in-house Design Team



Book a viewing today:

020 7788 7507
enquiries@workpad.co.uk
www.workpad.co.uk

16 Stanhope Place
London
W2 2HH

