



WORKPAD

12 DAVID MEWS
MARYLEBONE

BOOK A VIEWING



TAKE A VIRTUAL TOUR


SEND US A WHATSAPP | CONTACT FORM



12 DAVID MEWS

Located in the heart of Marylebone, 12 David Mews provides an enviable business address and easy access to an array of exclusive restaurants and boutiques. Offering a variety of contemporary private office suites, terrace and shower facilities.

 BAKER STREET
Walking - 3 mins

 MARYLEBONE
Walking - 6 mins

 BOND STREET
Walking - 8 mins

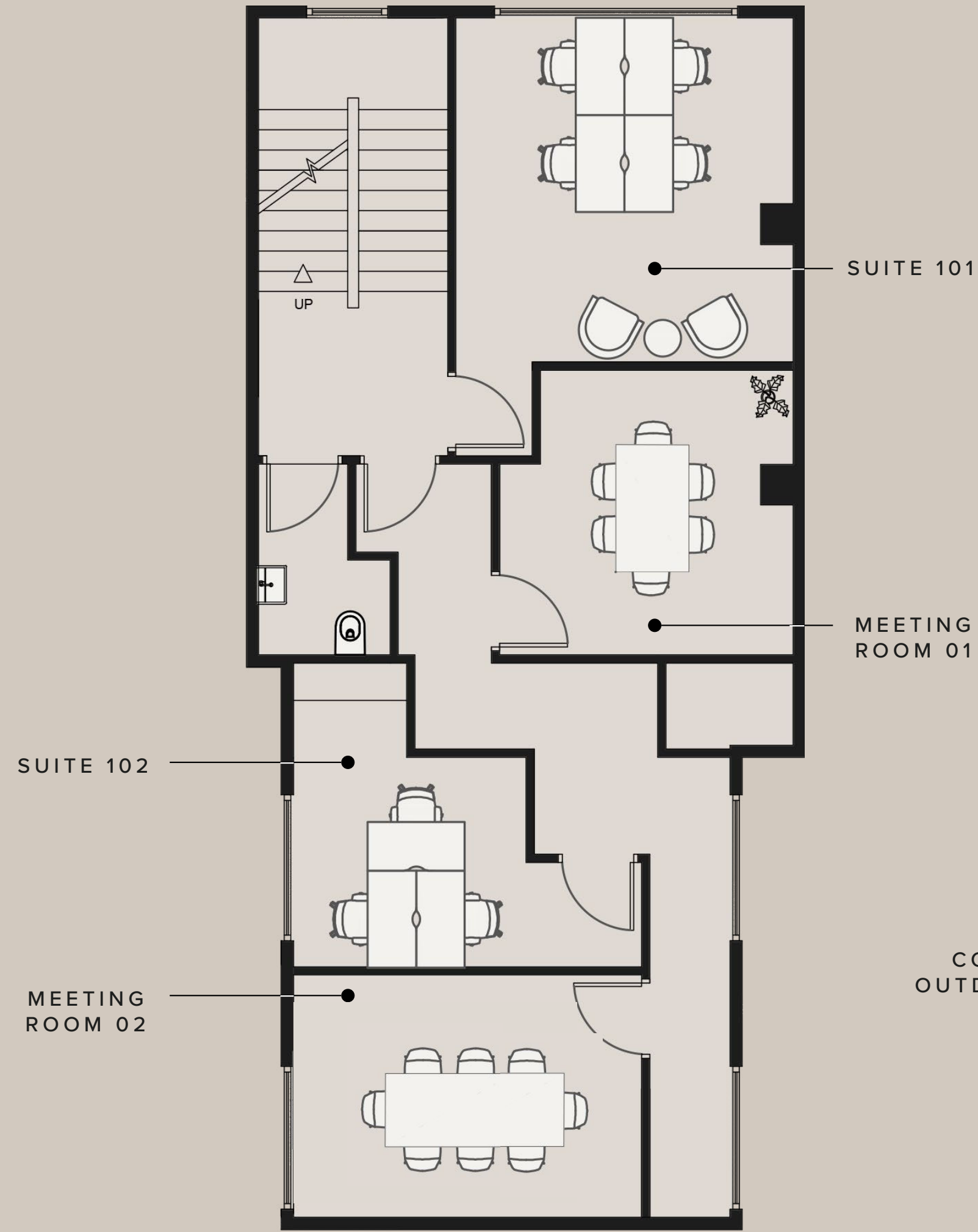


WHAT'S INCLUDED?

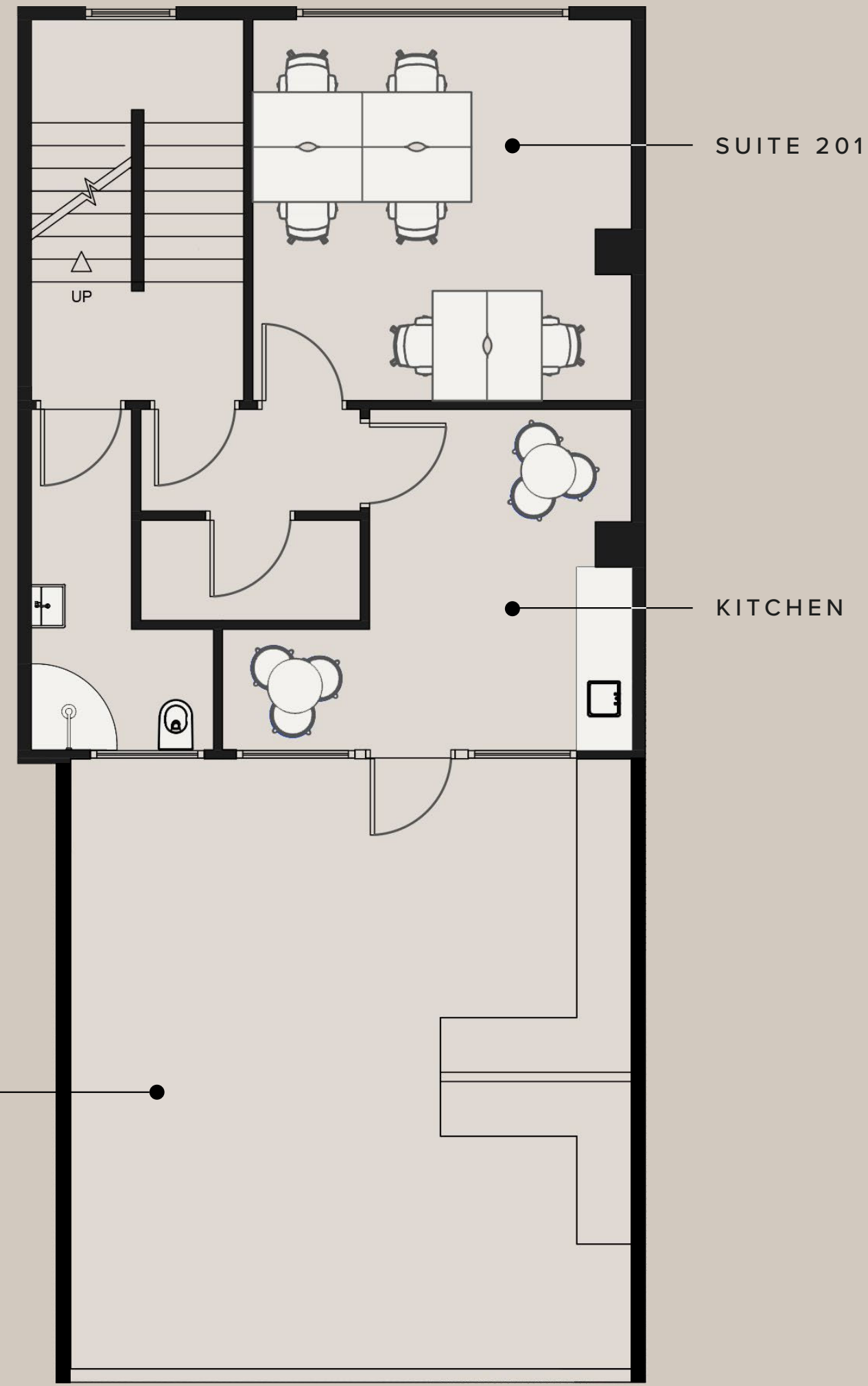
- All Inclusive & Flexible Contracts
- Building Rates & All Utilities
- In-House Maintenance & IT Support
- Daily Cleaning
- Communal Meeting Room
- Communal Kitchen
- Shower Facilities
- Communal Outdoor Space



FLOORPLANS



FIRST FLOOR



SECOND FLOOR



THIRD FLOOR



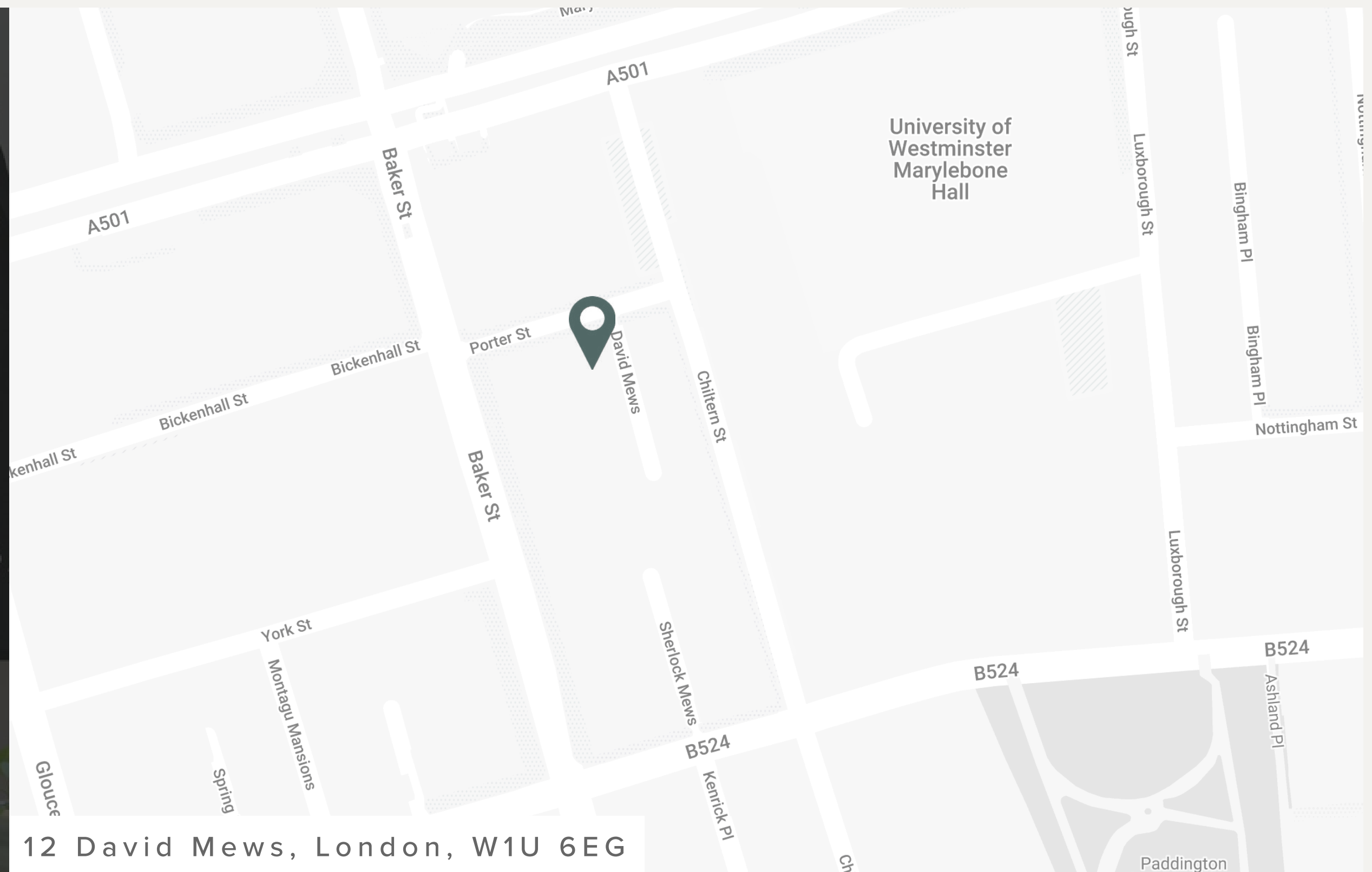
BOOK YOUR TOUR TODAY

Our team is dedicated to helping you explore our London buildings filled with unique spaces, personality and character.

Alternatively, you can view our building through a virtual tour below.

BOOK VIEWING

VIRTUAL TOUR



12 David Mews, London, W1U 6EG



DESIGN TAILORED TO YOU

At WorkPad we understand that when considering reorganisation of your existing offices, or undertaking a new office refurbishment, selecting the correct furniture is vital to delivering an office environment that works for you.

We aspire to make this process simple; with an array of designs grown out of years of experience and close cooperation with our clients, you can select individual or packaged designs, or speak to our stylist for a larger array.

[EXPLORE BESPOKE](#)



3D Visualisation produced by our in-house Design Team



Book a viewing today:

020 7788 7507
enquiries@workpad.co.uk
www.workpad.co.uk

16 Stanhope Place
London
W2 2HH

