



[]

WORKPAD

1 NEAL'S YARD
COVENT GARDEN



BOOK A VIEWING





1 NEAL'S YARD

Set in the heart of Seven Dials, 1 Neal's Yard offers an address to impress, and is an unquestionable location for the creative minded. Combining its original Victorian features with a minimalist interior this is a business location with an iconic history.

- 
COVENT GARDEN
 Walking - 3 mins
- 
LEICESTER SQAURE
 Walking - 5 mins
- 
TOTTENHAM COURT ROAD
 Walking - 7 mins

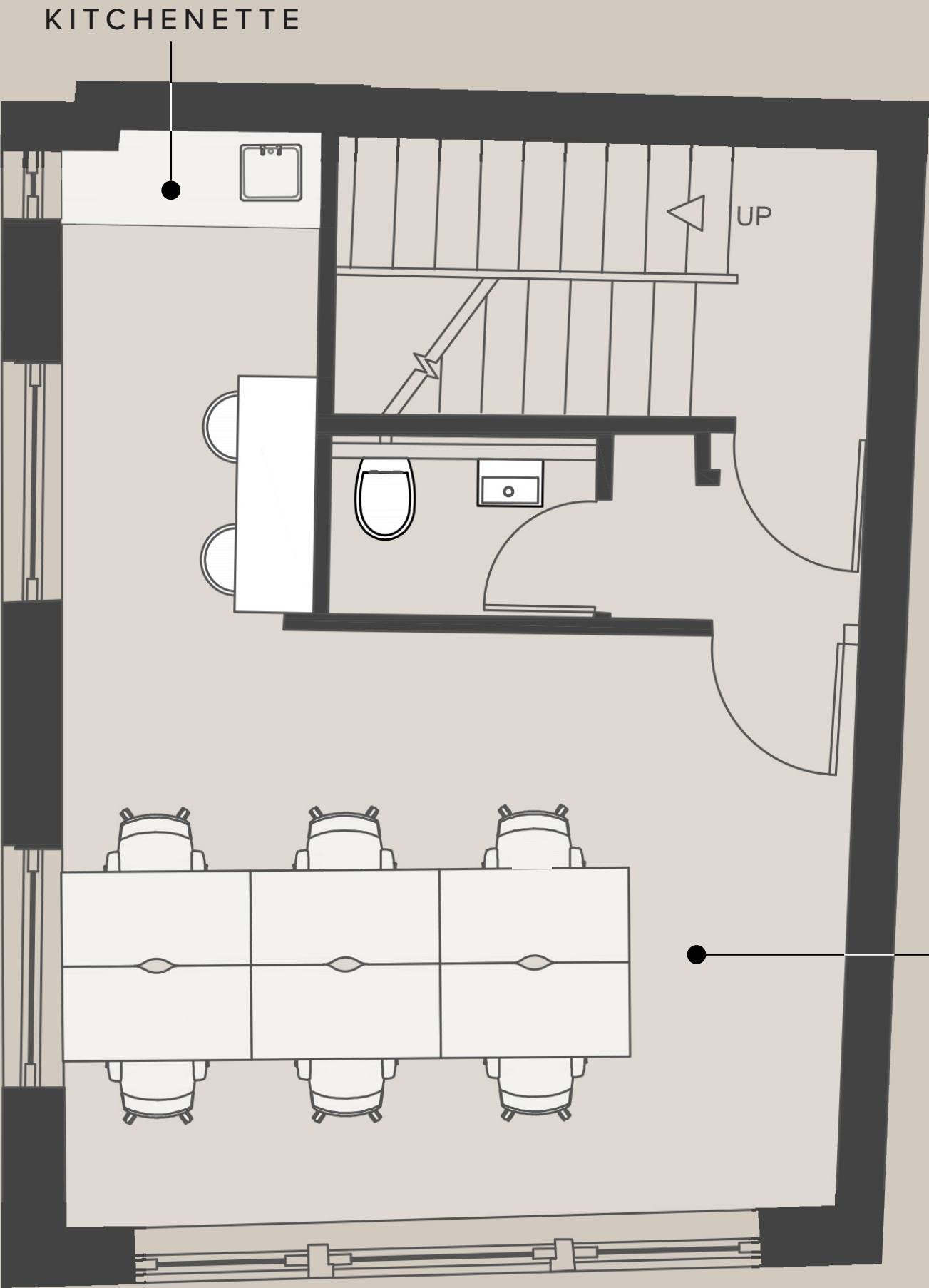


WHAT'S INCLUDED?

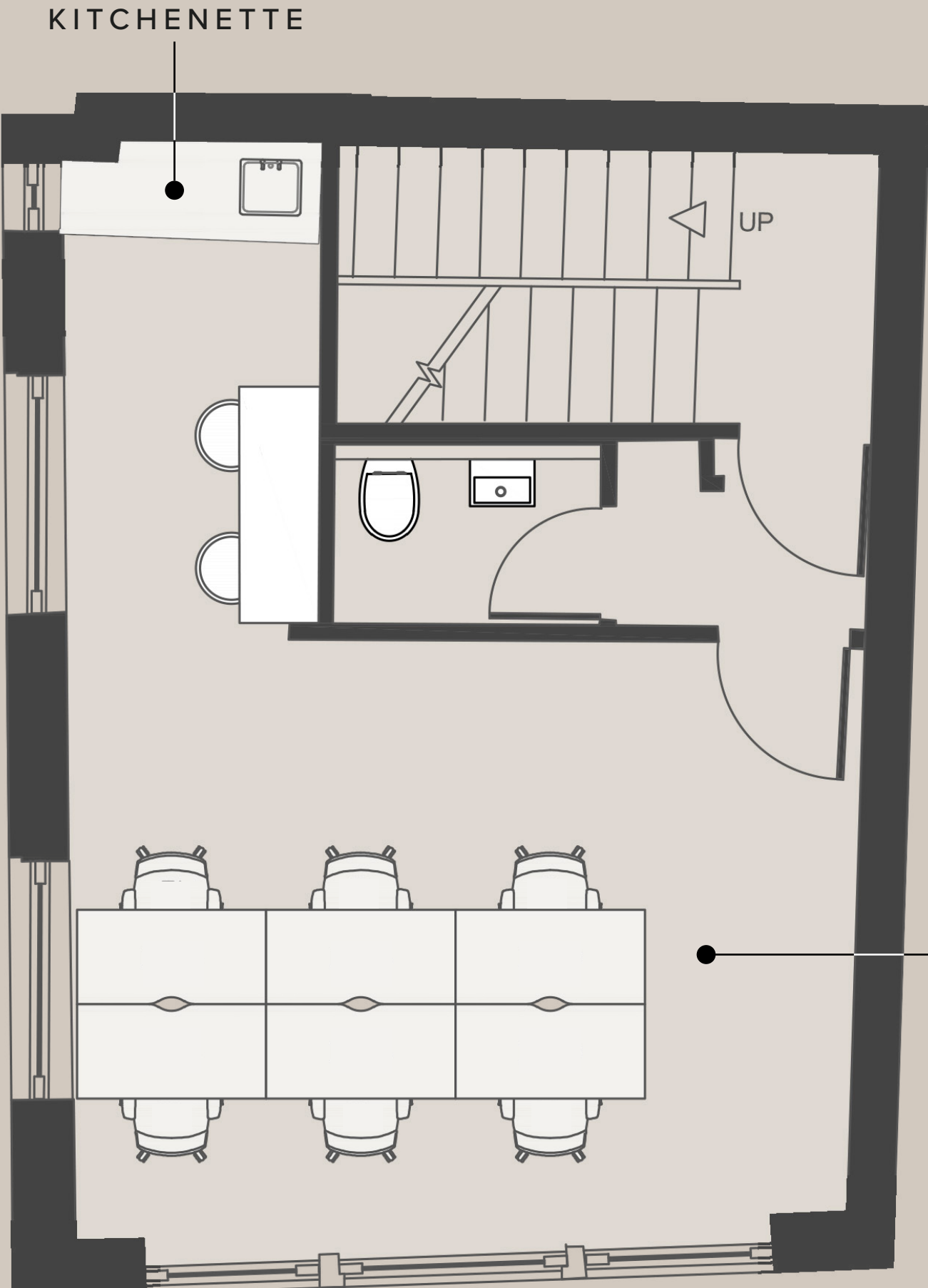
- ☐ All Inclusive & Flexible Contracts
- ☐ Building Rates & All Utilities
- ☐ Kitchenette Included In All Offices
- ☐ In-House Maintenance & IT Support
- ☐ Daily Cleaning



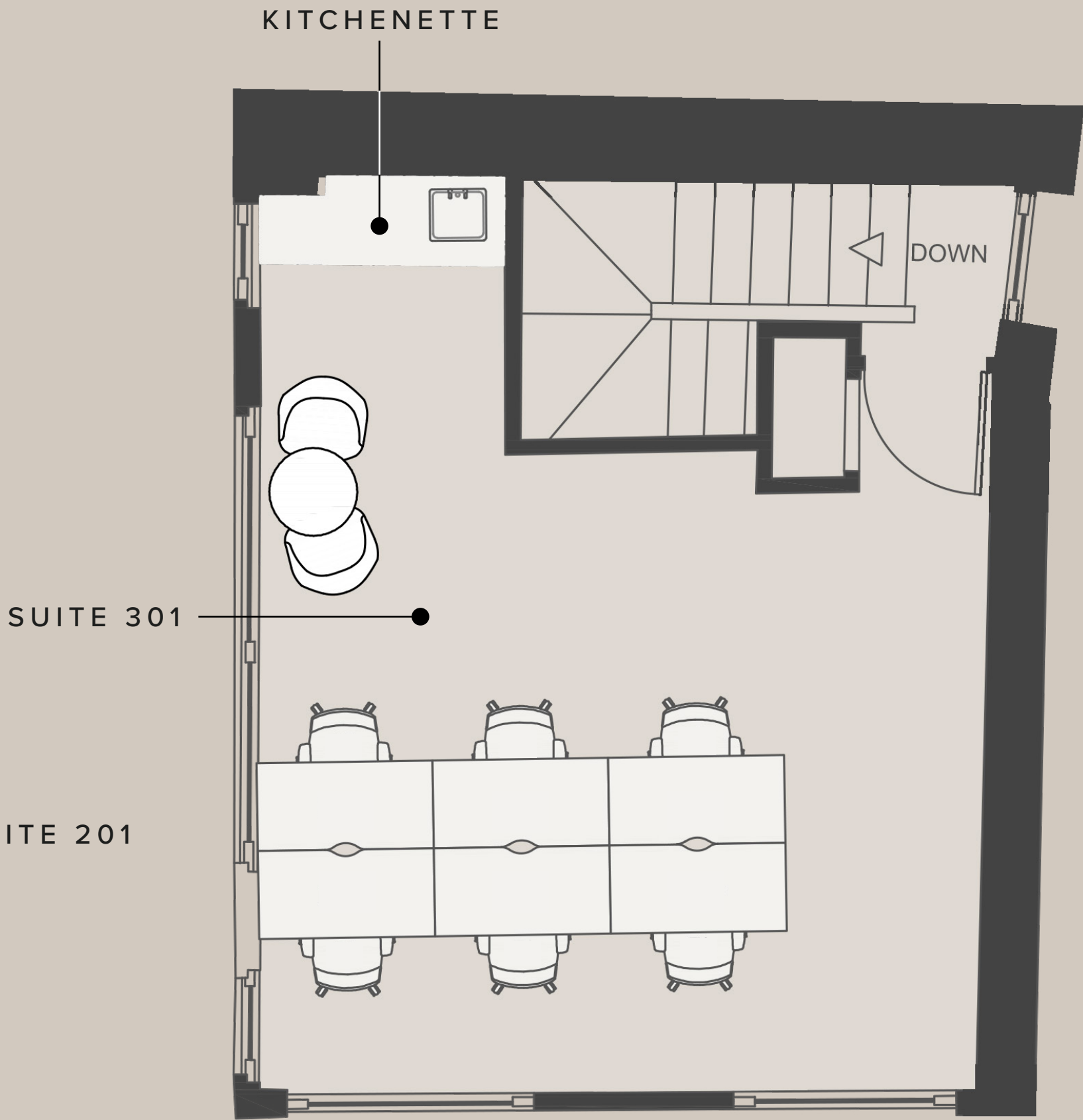
FLOORPLANS



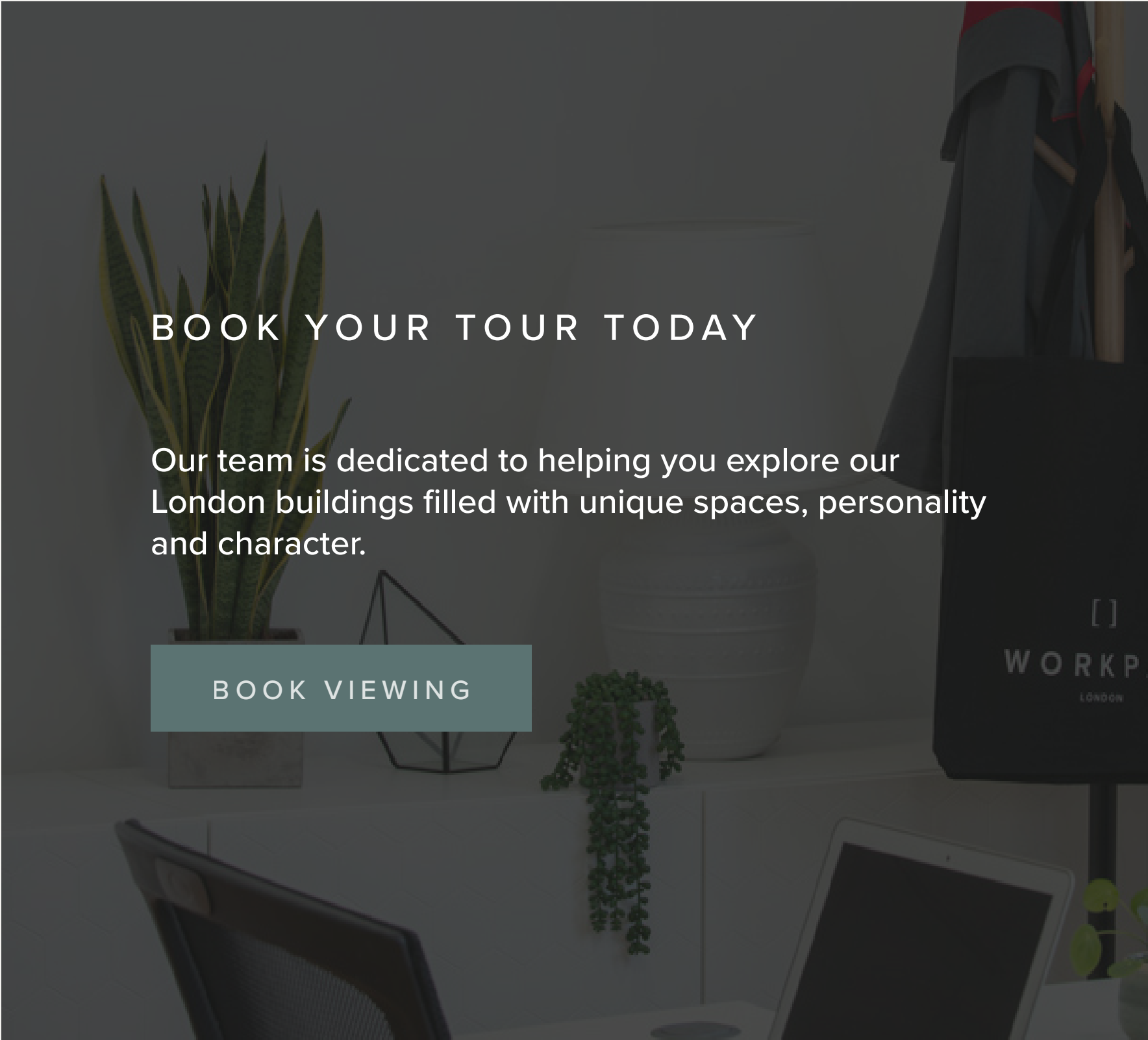
FIRST FLOOR



SECOND FLOOR



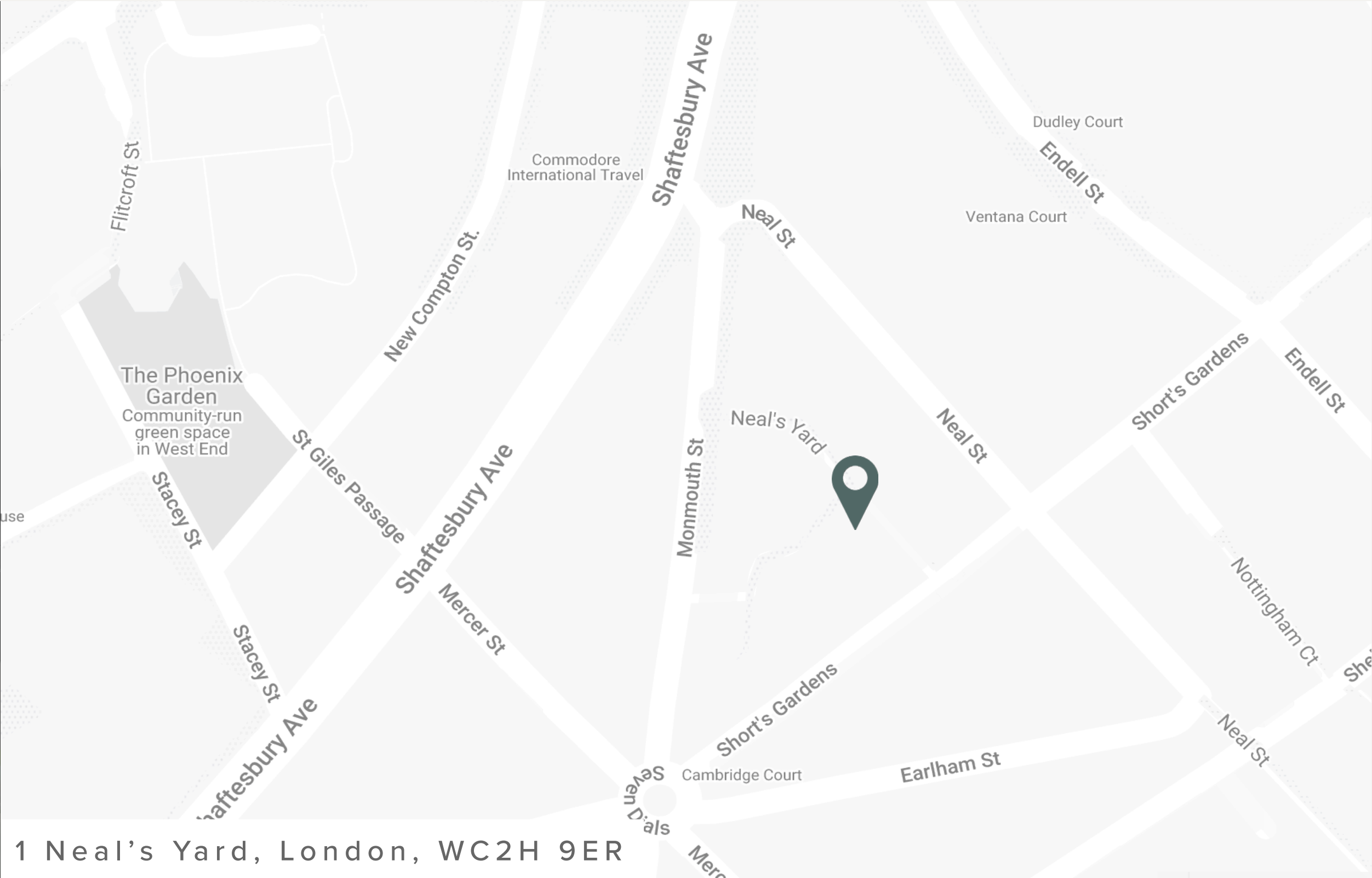
THIRD FLOOR



BOOK YOUR TOUR TODAY

Our team is dedicated to helping you explore our London buildings filled with unique spaces, personality and character.

BOOK VIEWING



DESIGN TAILORED TO YOU

At WorkPad we understand that when considering reorganisation of your existing offices, or undertaking a new office refurbishment, selecting the correct furniture is vital to delivering an office environment that works for you.

We aspire to make this process simple; with an array of designs grown out of years of experience and close cooperation with our clients, you can select individual or packaged designs, or speak to our stylist for a larger array.

[EXPLORE BESPOKE](#)

3D Visualisation produced by our in-house Design Team



Book a viewing today:

020 7788 7507
enquiries@workpad.co.uk
www.workpad.co.uk

16 Stanhope Place
London
W2 2HH

